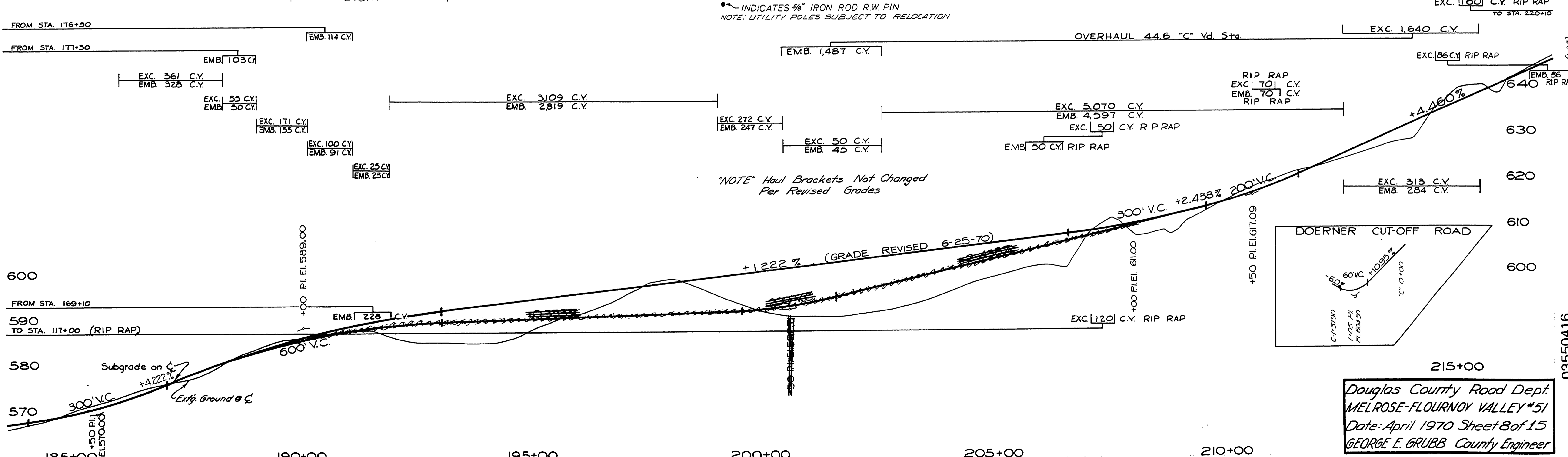
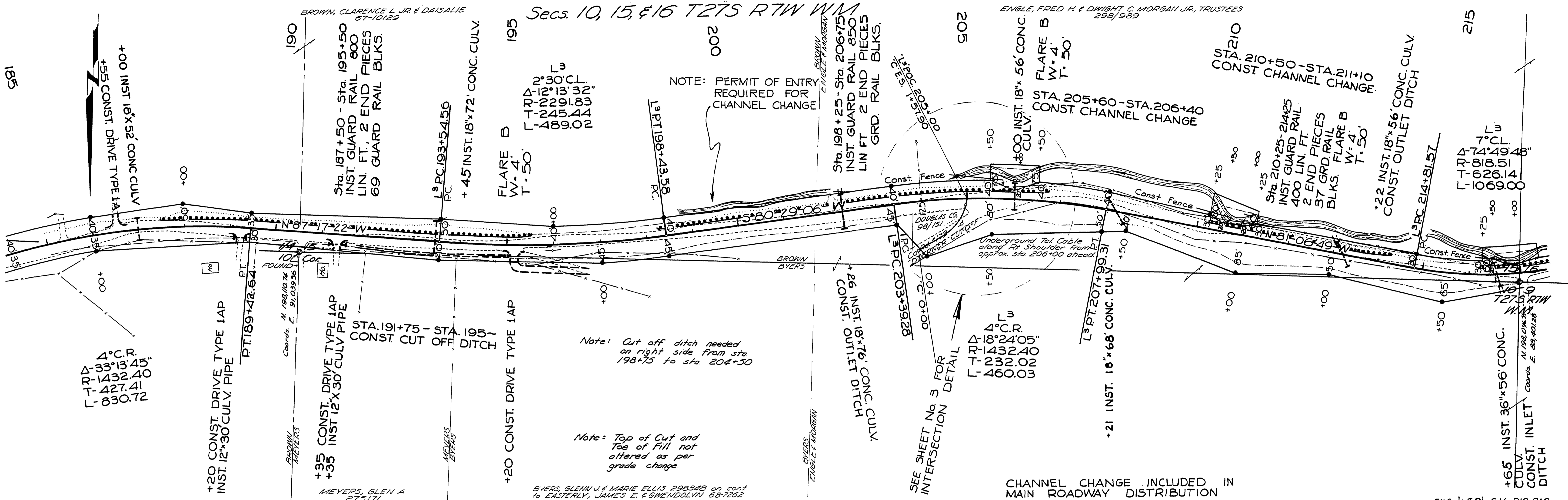


Secs. 10, 15, & 16 T275 RTW WM



Douglas County Road Dept.  
 MELROSE-FLOURNOY VALLEY #51  
 Date: April 1970 Sheet 8 of 15  
 GEORGE E. GRUBB County Engineer

Apr. 1970  
 G. Rd # 51  
 SHE. 8 OF 15

03550416