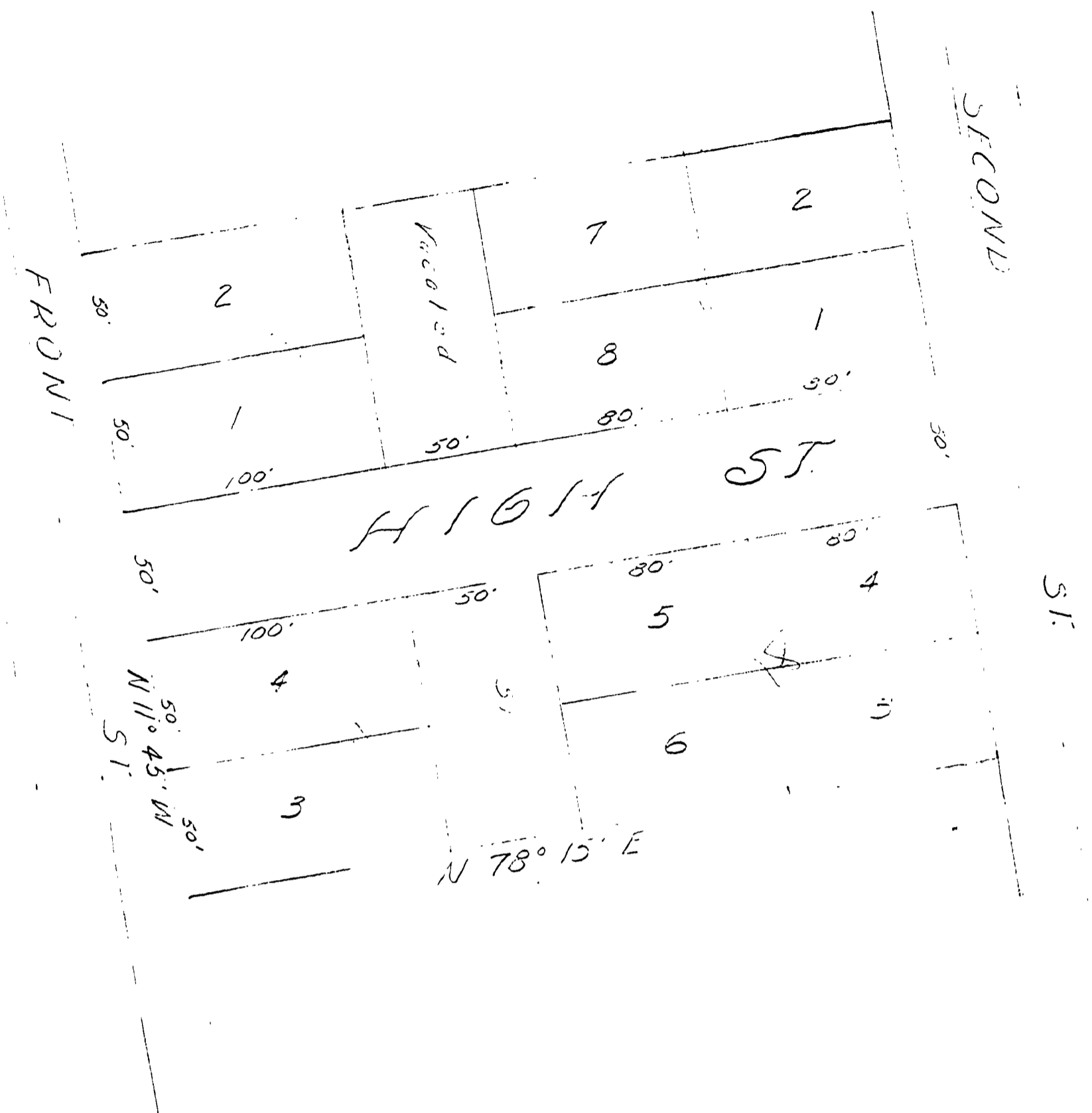


HIGH ST



A portion of
GARDNER
 Sec. 22, T.21S., R. 12W., P. 11N.
 July, 1968 Scale 1" = 50'

"NOTE" High St. accepted but not listed by Douglas County. This drawing taken from plat by W.B. Thiel, recorded in Vol E P. 29 Plat Records of Douglas County, Oregon.



DATE
 DRAWN BY
 CHECKED BY
 APPROVED BY

DATE
 DRAWN BY
 CHECKED BY
 APPROVED BY

RECEIVED
 JUL 31 1968
 COUNTY ENGINEER
 DOUGLAS COUNTY, OREGON

DOUGLAS COUNTY ROAD DEPT.
HIGH ST.
 (GARDNER ST.)
 DATE - JULY 1968 56E10E1
 GEORGE E. GRUBB CO. ENG.

10000000