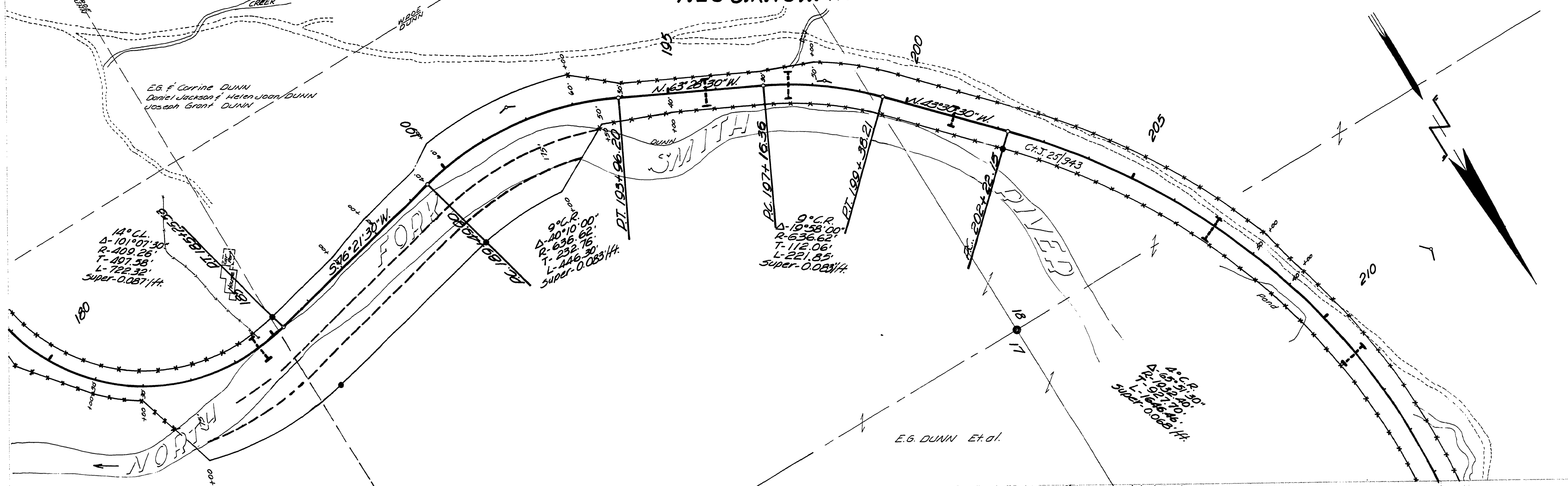


T. 20 S. R. 10 W. W.M.



E.G. & Corrine DUNN
Daniel Jackson & Helen Joan DUNN
Joseph Grant DUNN

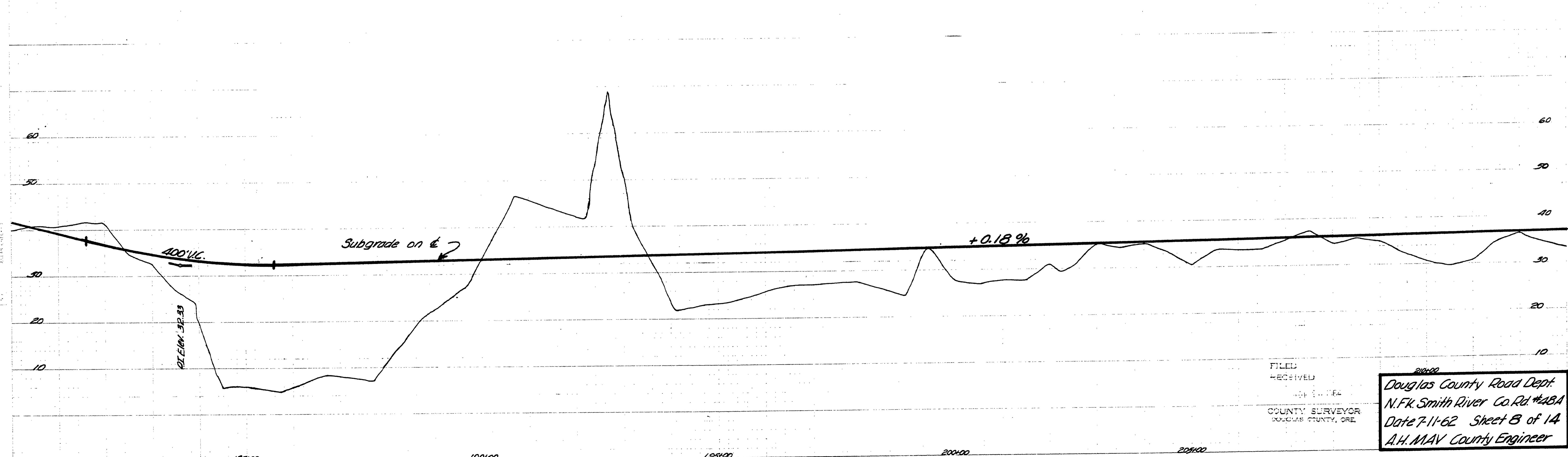
14° C.L.
Δ-101° 07' 30"
R-409.26'
T-197.38'
L-722.32'
Super-0.0831/H

9° C.R.
Δ-20° 10' 00"
R-636.62'
T-232.76'
L-446.30'
Super-0.0831/H

9° C.R.
Δ-18° 58' 00"
R-636.62'
T-112.06'
L-221.85'
Super-0.0831/H

4° C.R.
Δ-65° 51' 30"
R-1022.40'
L-1616.46'
Super-0.0831/H

● Indicates 3/4" Iron Pins & 4x4 Posts.



FILED
RECEIVED
COUNTY SURVEYOR
DOUGLAS COUNTY, ORE.

Douglas County Road Dept.
N.F.K. Smith River Co. Rd. #48A
Date 7-11-62 Sheet B of 14
A.H. MAV County Engineer

03390403