

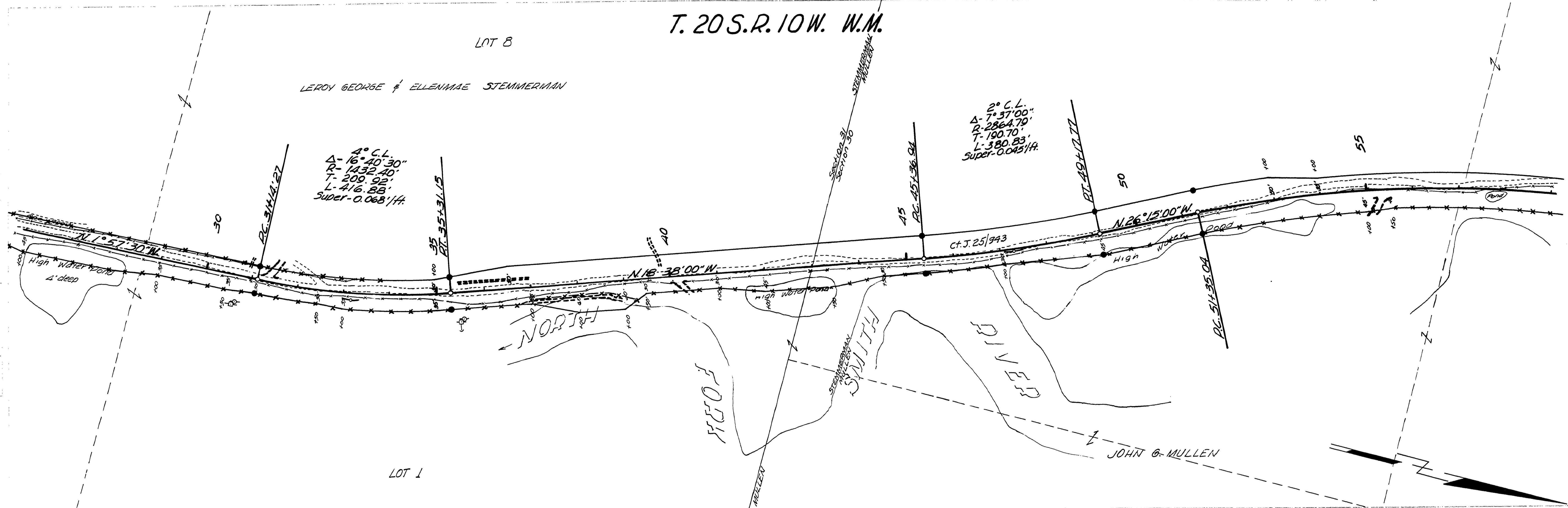
T. 20 S. R. 10 W. W.M.

LOT 8

LEROY GEORGE & ELLENMAE STEMMERMAN

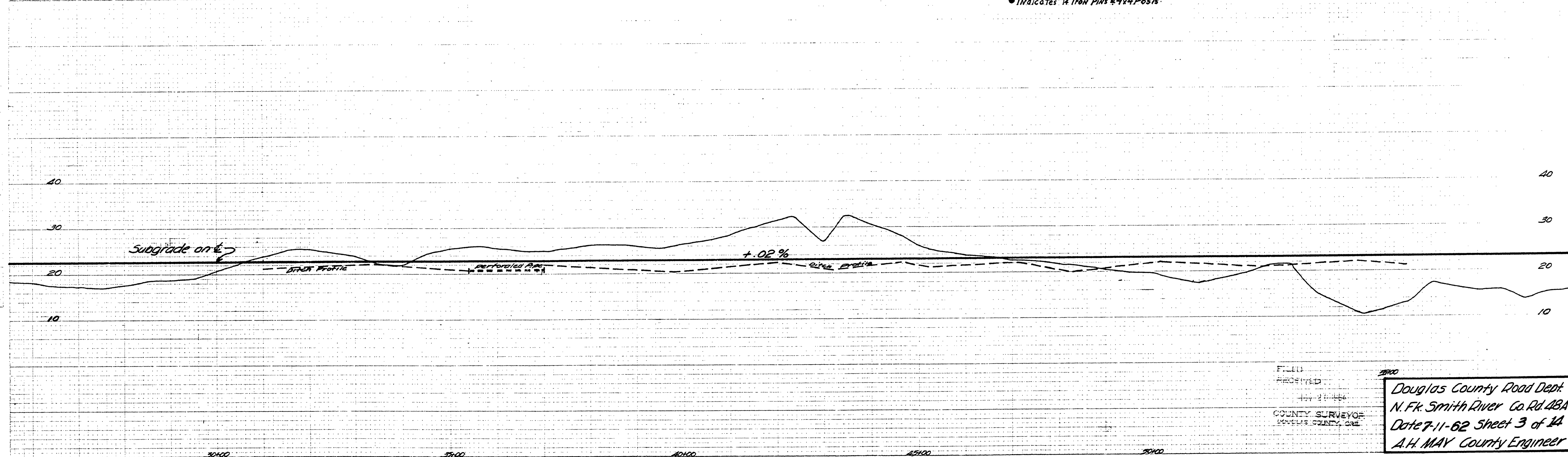
4° C.L.
Δ- 16° 40' 30"
R- 1432.40'
T- 200.92'
L- 416.88'
Super- 0.068 1/4"

2° C.L.
Δ- 7° 37' 00"
R- 2864.70'
T- 190.70'
L- 380.83'
Super- 0.043 1/4"



LOT 1

● Indicates 1/4\"/>



Douglas County Road Dept
 N. Fk. Smith River Co. Rd. 48A
 Date 7-11-62 Sheet 3 of 14
 A.H. MAY County Engineer

7-11-62
 Co. Rd #48-A sht. 3 of 14 (35)

M.P. 0.52 - 1.09

00520109