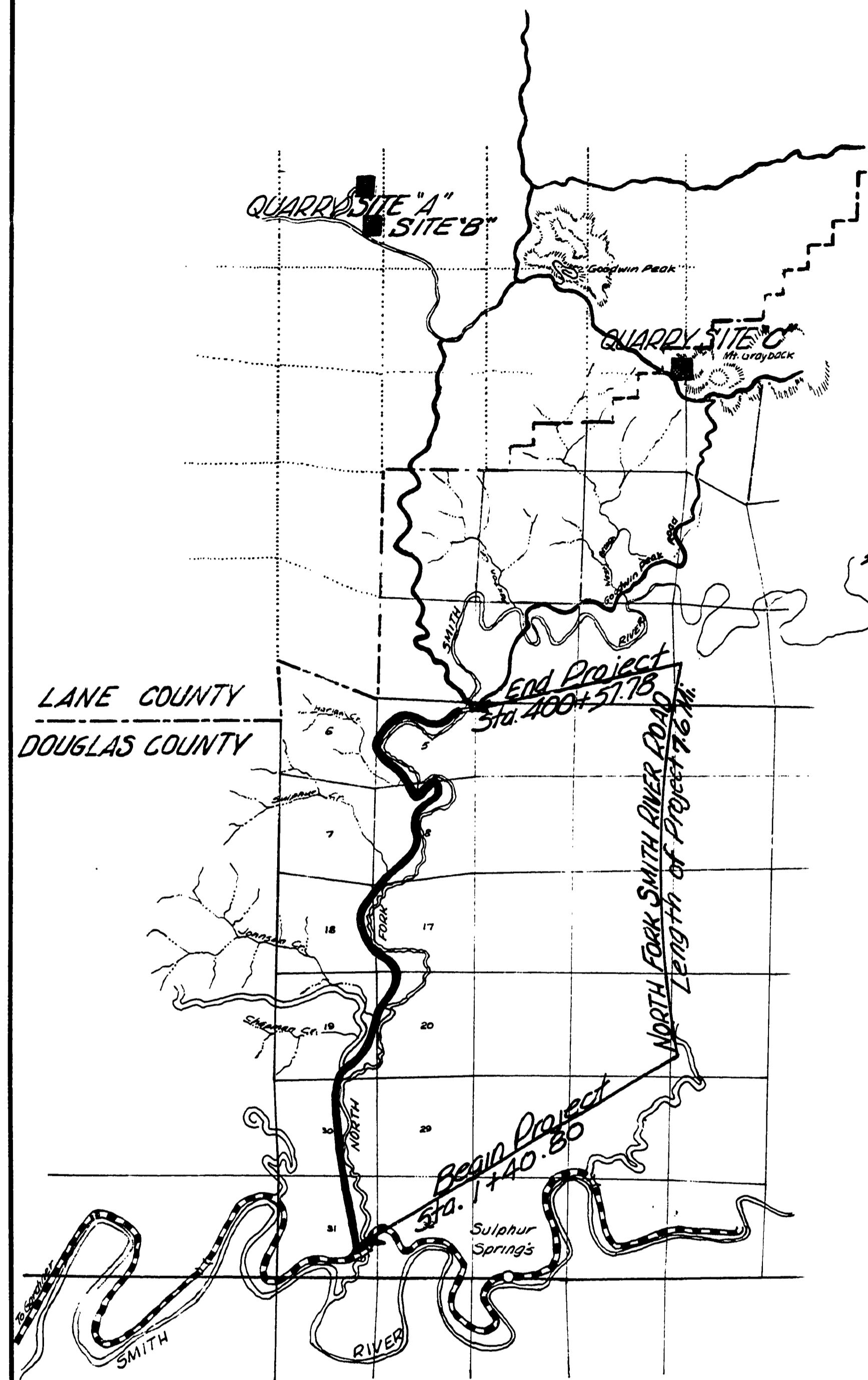
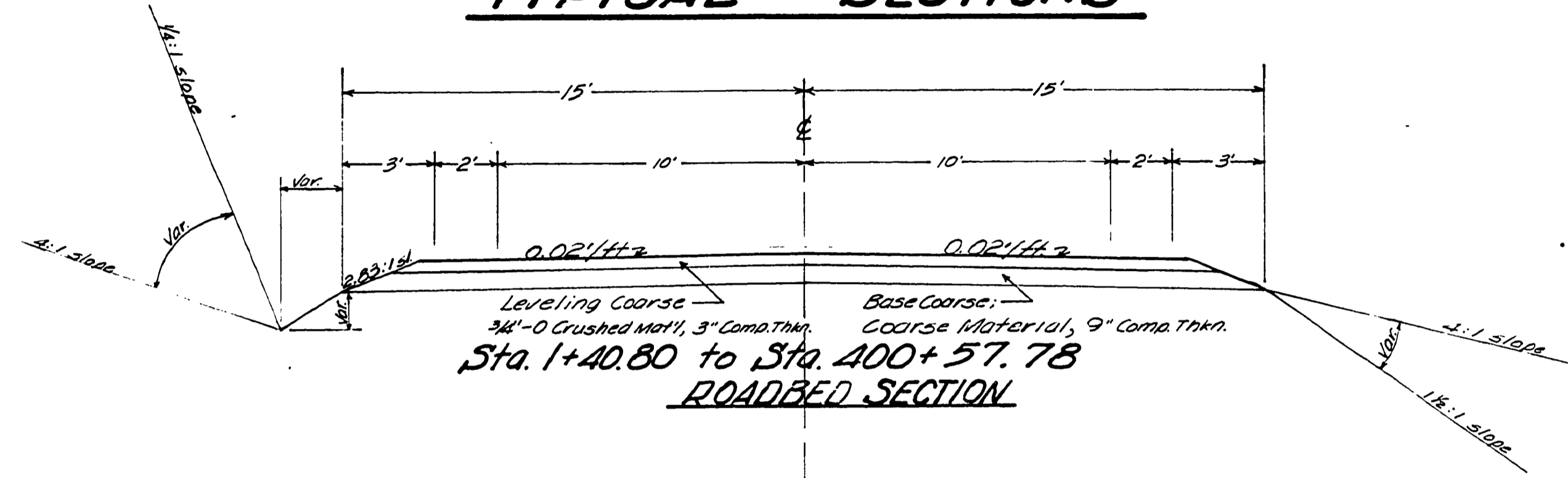


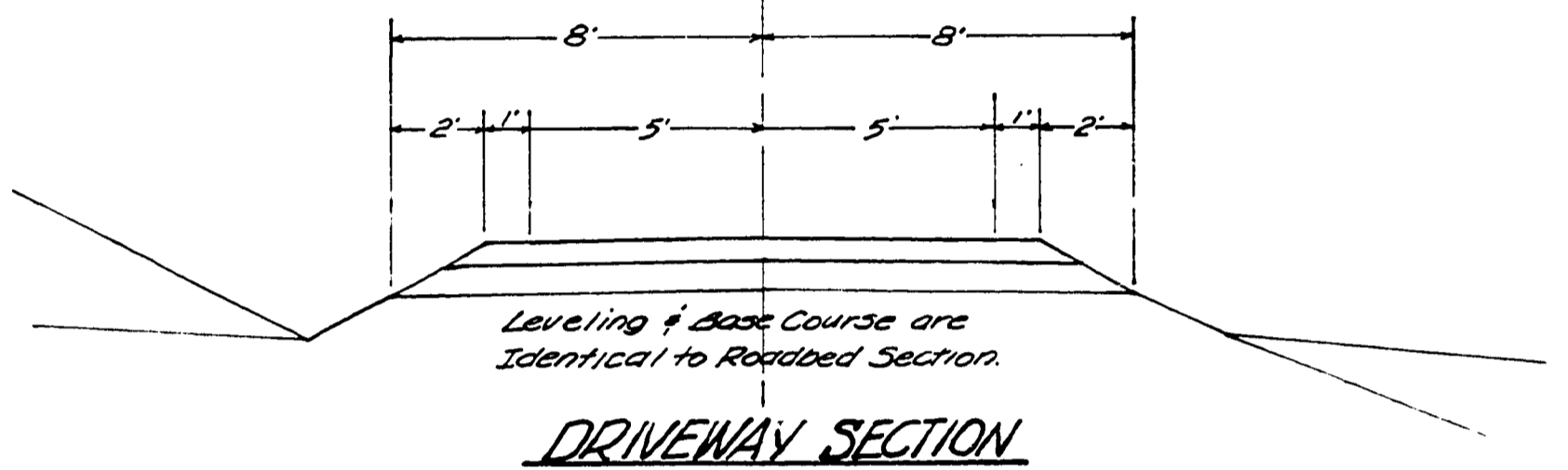
DOUGLAS COUNTY OREGON
AS CONSTRUCTED
GRADING & SURFACING
NORTH FORK OF
SMITH RIVER
COUNTY ROAD NO. 48-A



TYPICAL SECTIONS



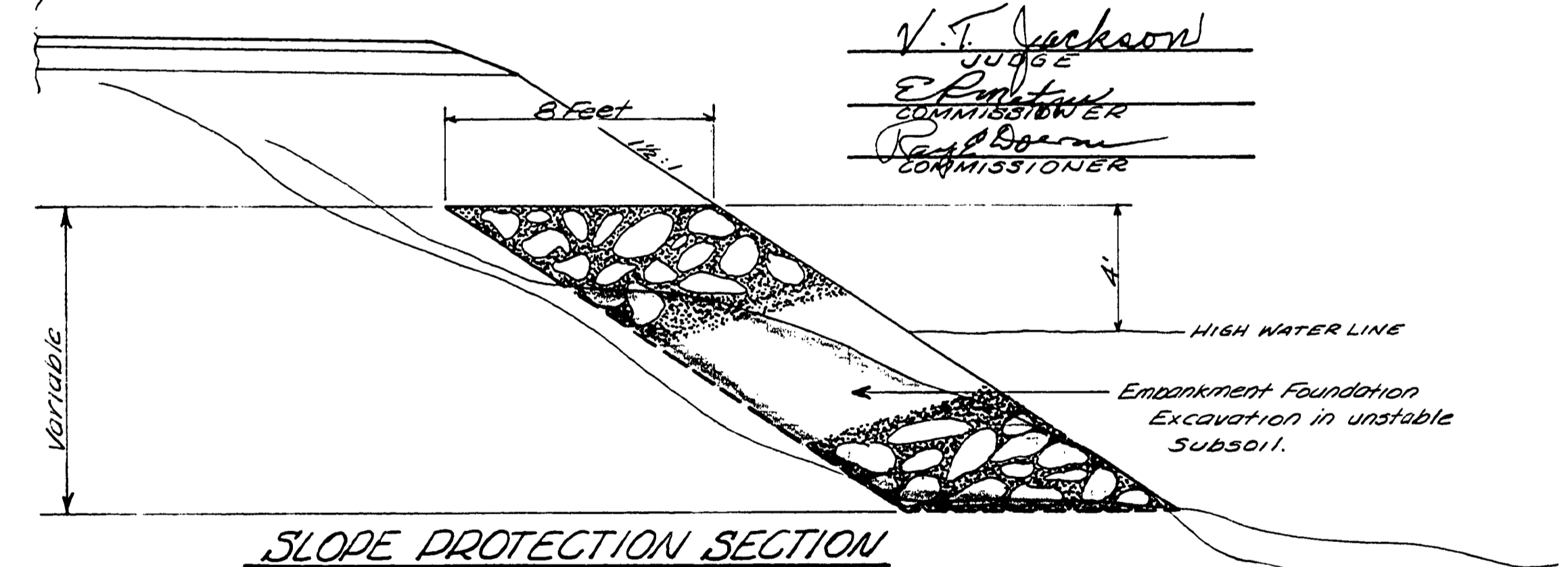
Leveling Course
 3/4" - 0 Crushed Mat'l, 3" Comp. Thk.
 Base Course
 Coarse Material, 9" Comp. Thk.
 Sta. 1+40.80 to Sta. 400+57.78
ROADBED SECTION



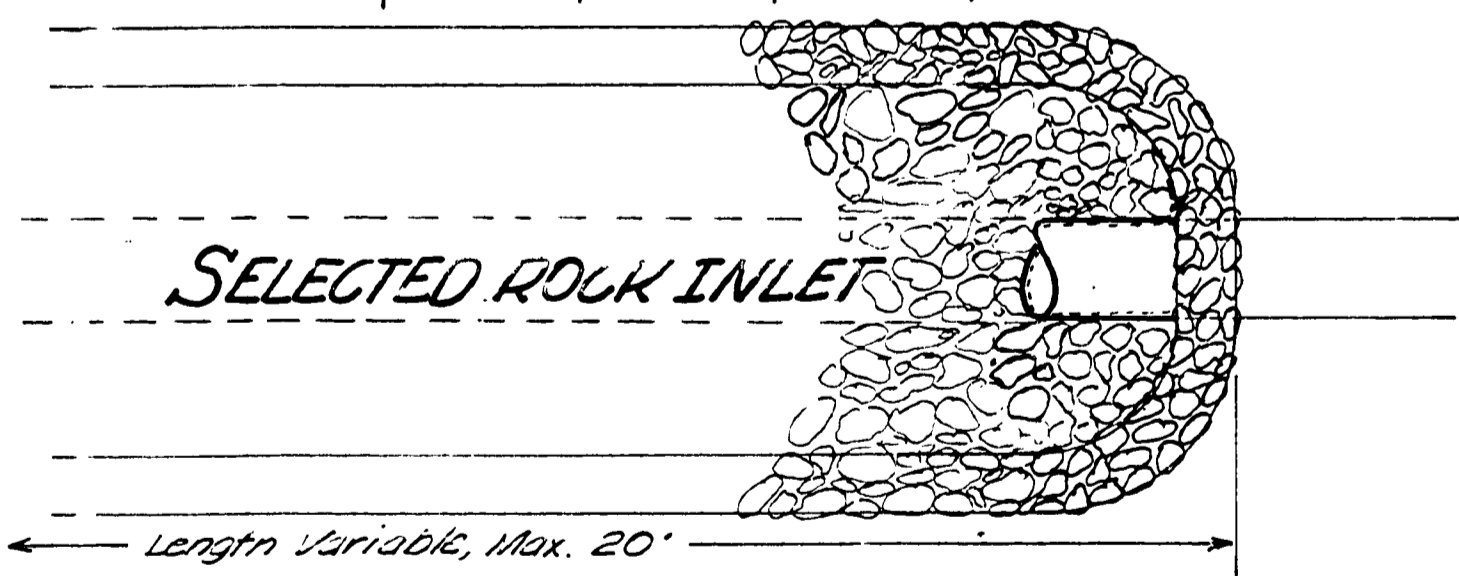
Leveling & Base Course are
 Identical to Roadbed Section.
DRIVEWAY SECTION

Adopted By Resolution of the
 County Court this 13th day of July 1962

V. T. Jackson
 JUDGE
 E. P. ...
 COMMISSIONER
 R. B. ...
 COMMISSIONER

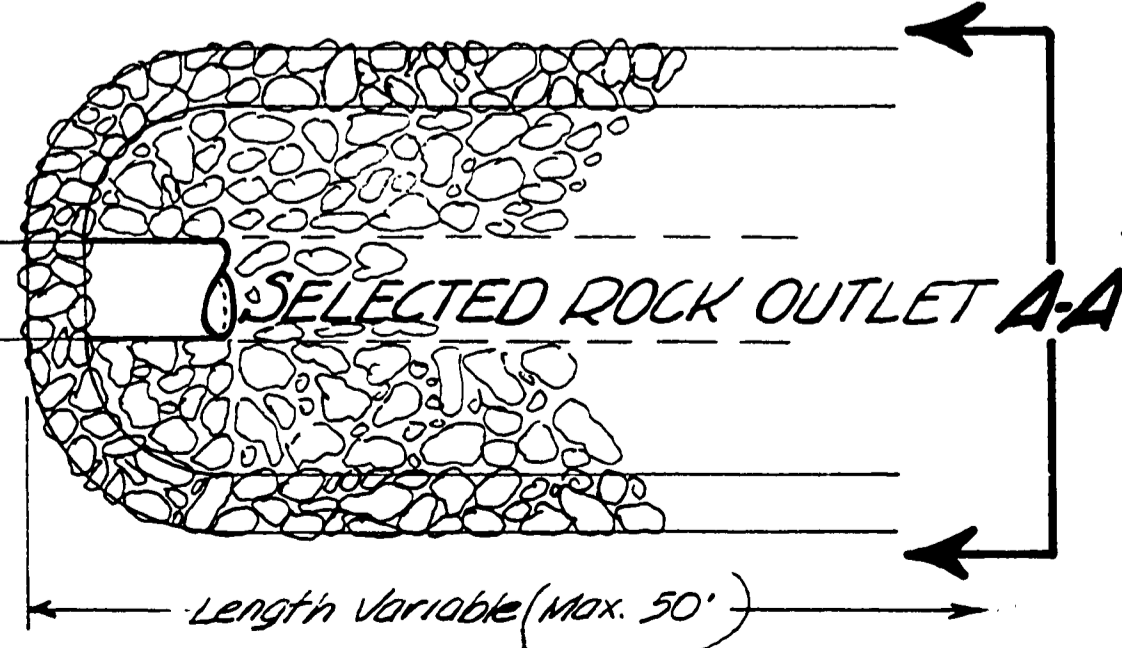


SLOPE PROTECTION SECTION



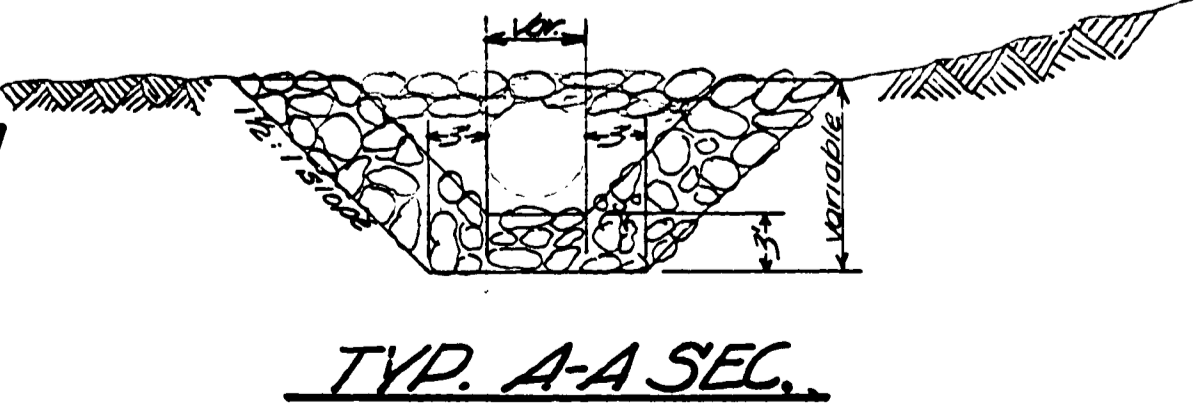
SELECTED ROCK INLET

Length Variable, Max. 20'

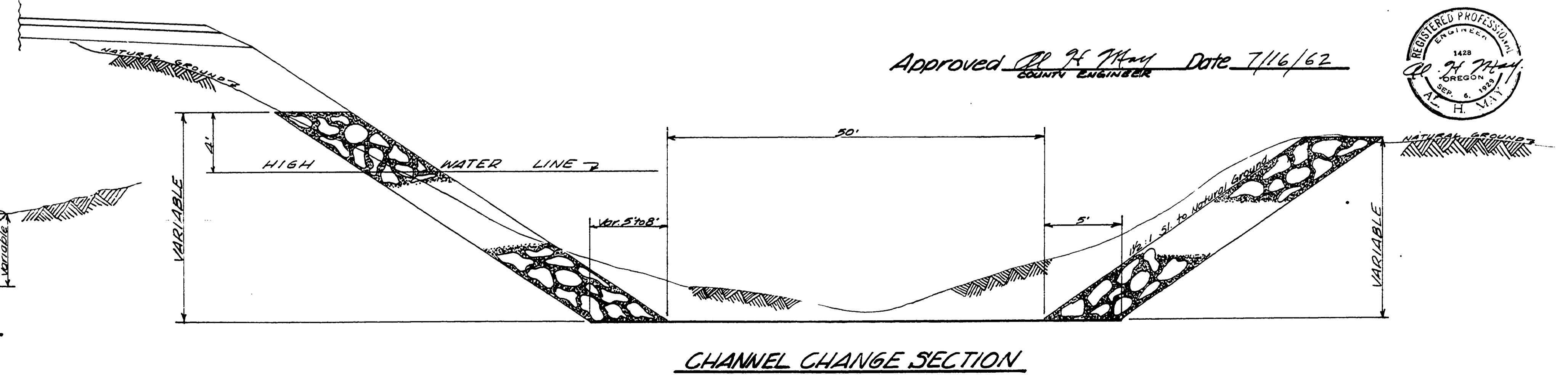


SELECTED ROCK OUTLET A-A

Length Variable (Max. 50')



TYP. A-A SEC.



CHANNEL CHANGE SECTION

Approved R. H. ... Date 7/16/62
 COUNTY ENGINEER



7-11-62

0000075C