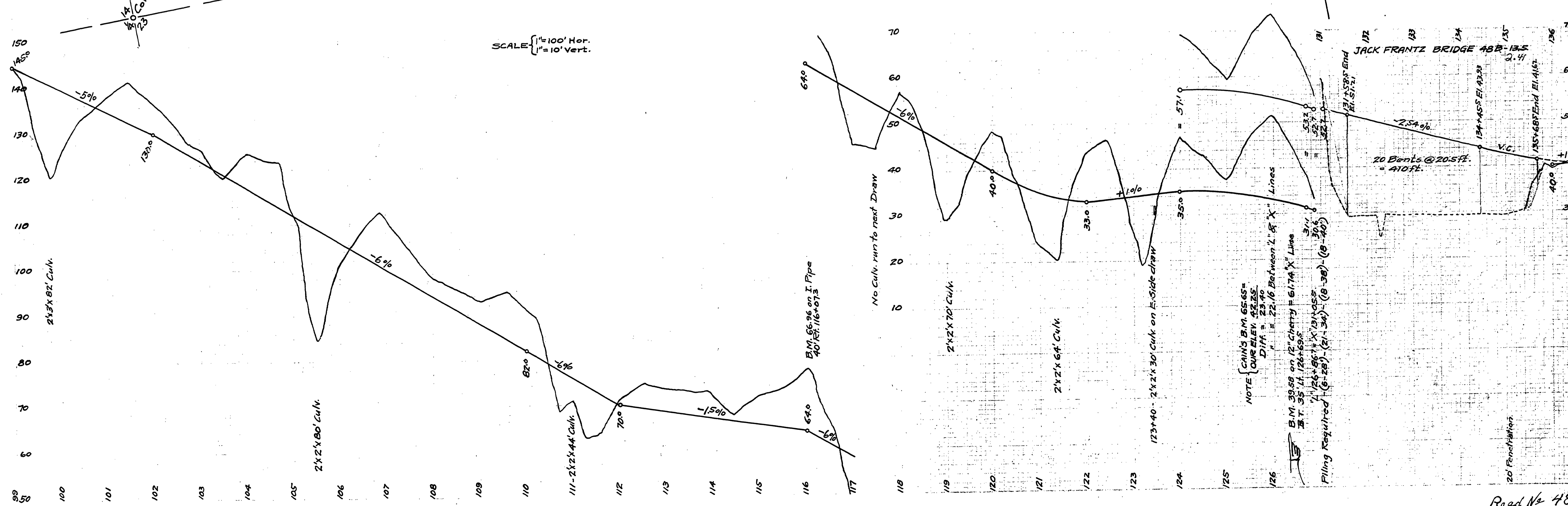
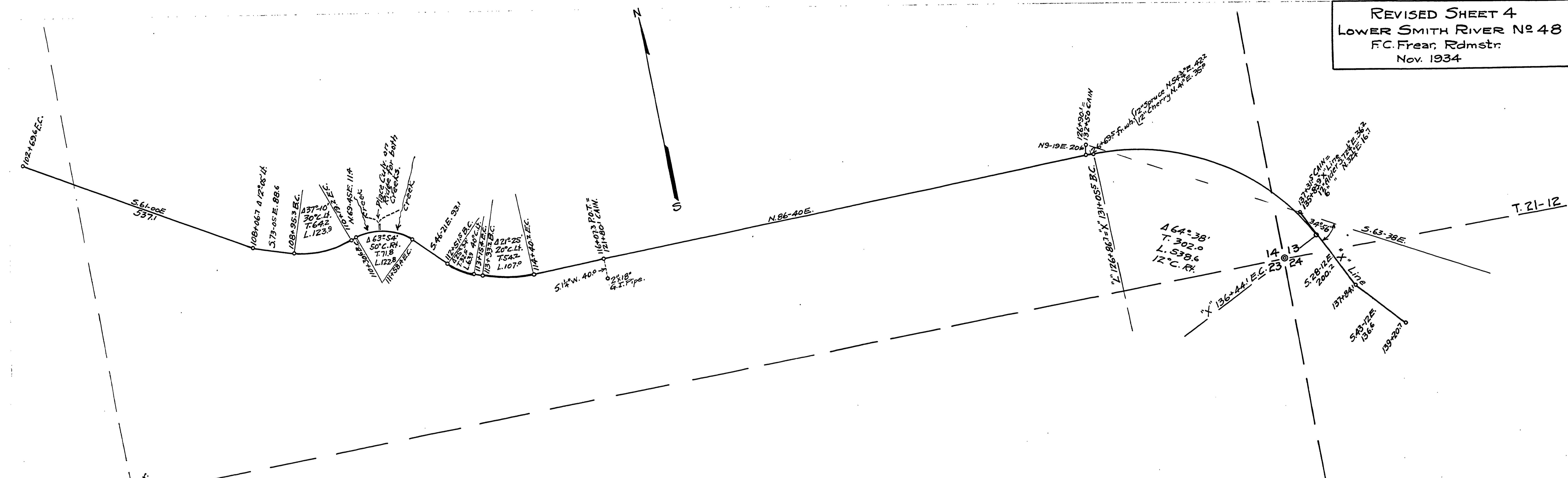
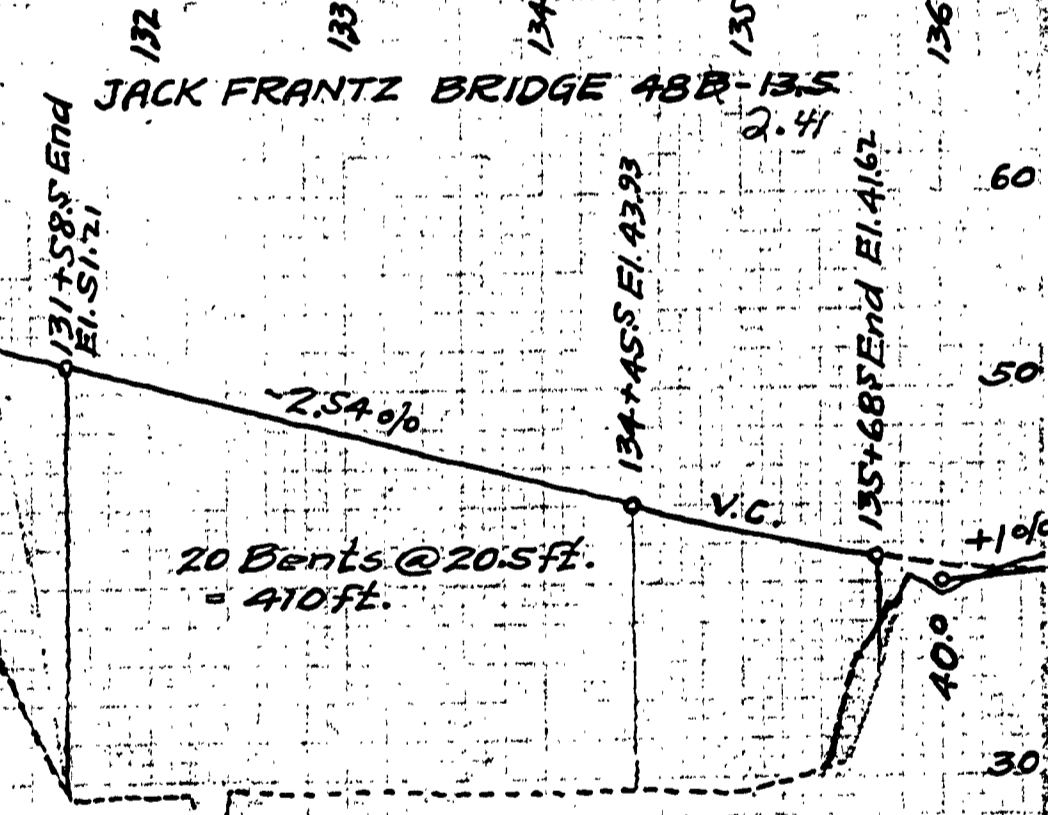


REVISED SHEET 4
 LOWER SMITH RIVER No 48
 F.C. Frear, Rdmsr.
 Nov. 1934



SCALE { 1" = 100' Hor.
 1" = 10' Vert.

NOTE { CAIN'S B.M. 6565 =
 OUR ELEV. 42.85
 Diff. = 23.90
 " " = 22.16 Between L. & X Lines
 B.M. 3958 on 12" Cherty = 61.74 X Line
 B.T. 35.11. 126+69.5
 Piling Required (6-28) (21-34) (19-38) (19-40)



Road No 48

02000210