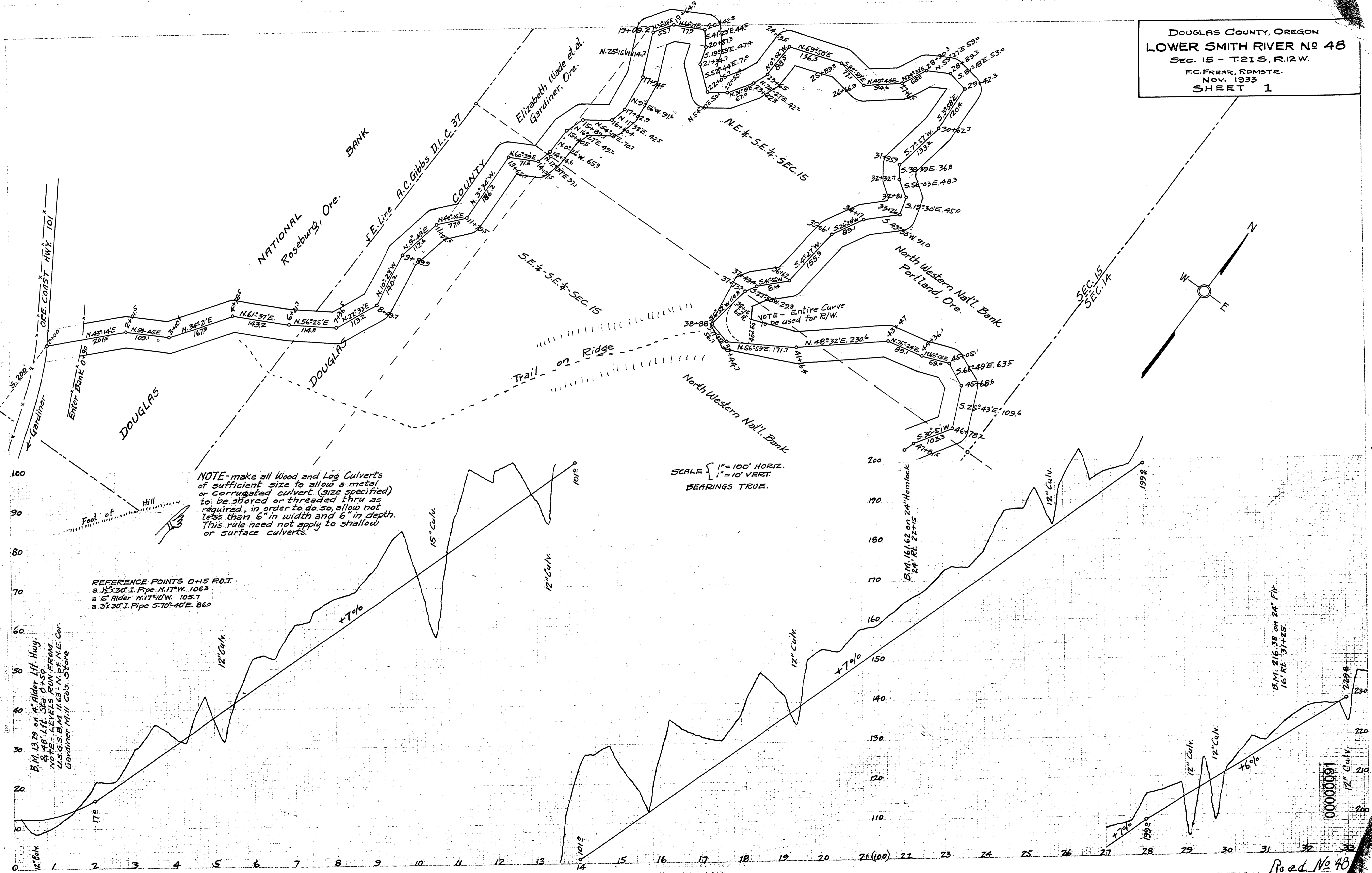


DOUGLAS COUNTY, OREGON
LOWER SMITH RIVER No 48
 SEC. 15 - T.21S, R.12W.
 F.C. FREAR, RDMSTR.
 NOV. 1933
 SHEET 1



NOTE - make all Wood and Log Culverts of sufficient size to allow a metal or corrugated culvert (size specified) to be shovled or threaded thru as required, in order to do so, allow not less than 6" in width and 6" in depth. This rule need not apply to shallow or surface culverts.

SCALE { 1" = 100' HORIZ.
 1" = 10' VERT.
 BEARINGS TRUE.

REFERENCE POINTS 0+15 P.O.T.
 a 1 1/2" 30" I. Pipe N.17°W. 106.3
 a 6" Rider N.17°10'W. 105.7
 a 3" 30" I. Pipe S.70°40'E. 86.0

B.M. 13.29 on 4" Alder Lift Hwy.
 8.48' 1st Sta. 0+50
 NOTE - LEVELS RUN FROM
 U.S.G.S. B.M. 11.63 - N. of N.E. Cor.
 Gardiner Mill. Cos. Store

B.M. 216.38 on 24" Fir
 16' Rt. 31+25

00000091

Road No 48