

T215 R12W WM.

STA. 65+00 TO STA. 69+75
 INST. GUARD RAIL 475 LIN
 FT. 2 RAIL END PIECES &
 42 GUARD RAIL BLOCKS

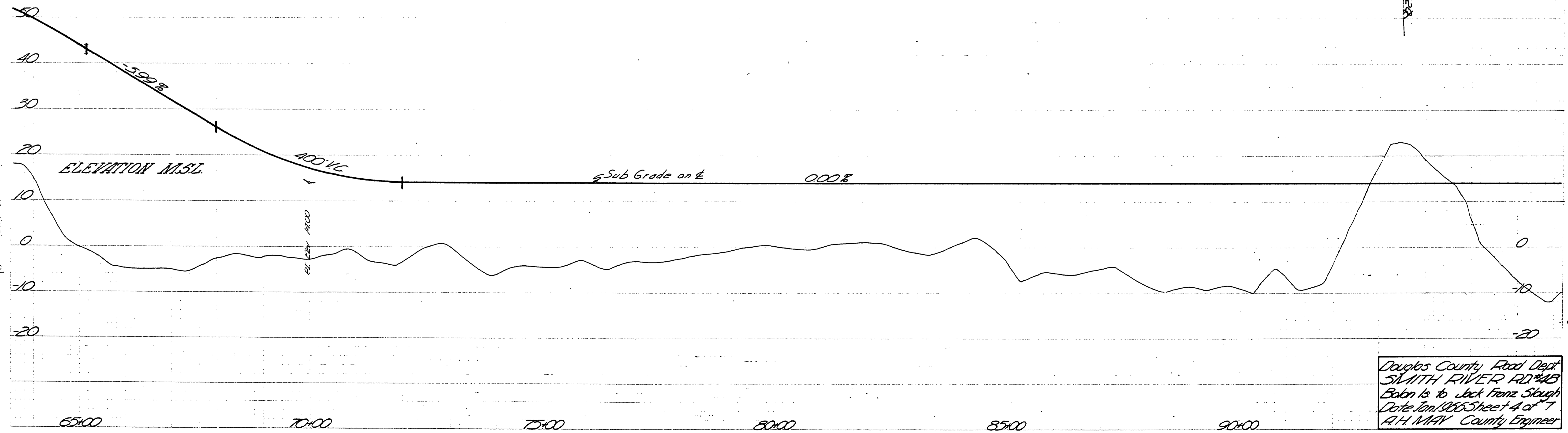
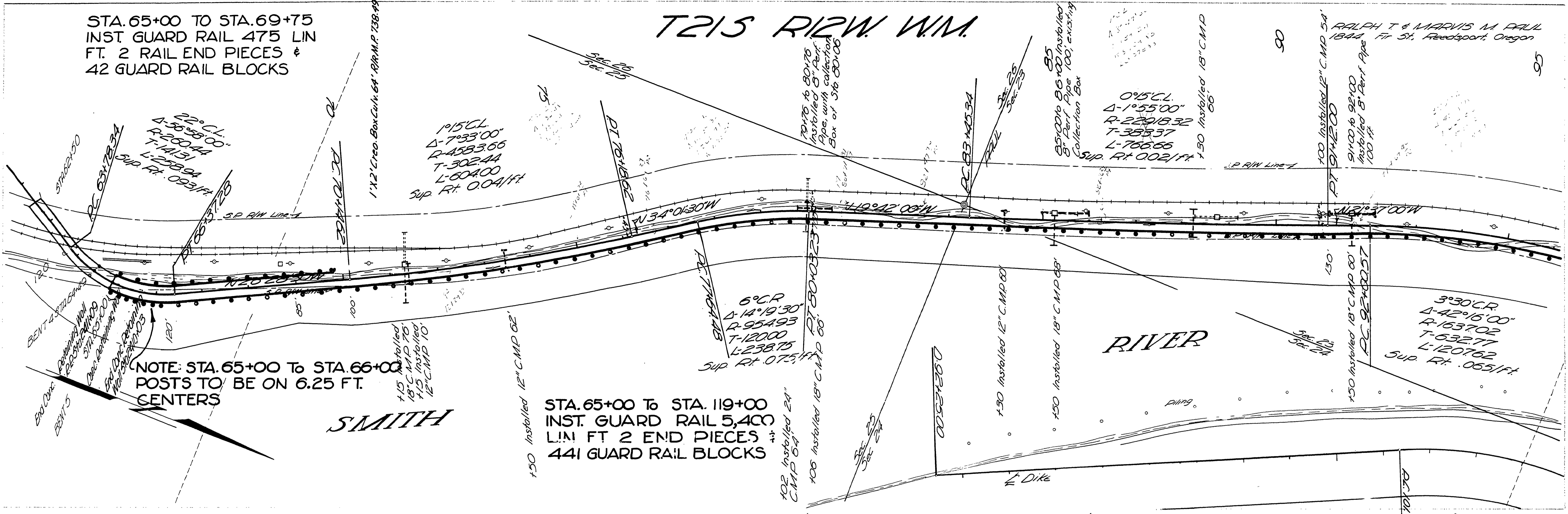
NOTE: STA. 65+00 TO STA. 66+00
 POSTS TO BE ON 6.25 FT.
 CENTERS

STA. 65+00 TO STA. 119+00
 INST. GUARD RAIL 5,400
 LIN FT 2 END PIECES
 441 GUARD RAIL BLOCKS

RIVER

SMITH

RALPH T & MARVIS M PAUL
 1844 Fir St, Reedsport, Oregon



Douglas County Road Dept
 SMITH RIVER RD #48
 Began Is to Jack Franz Slough
 Date Jan 1985 Sheet 4 of 7
 A.H. MAY County Engineer

01030162