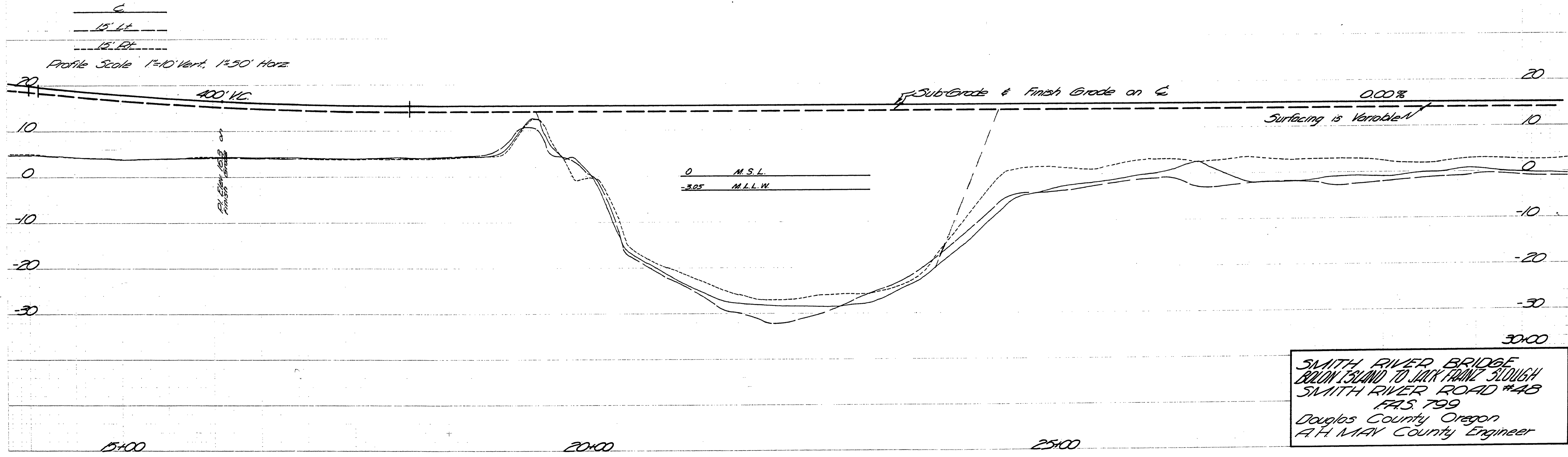
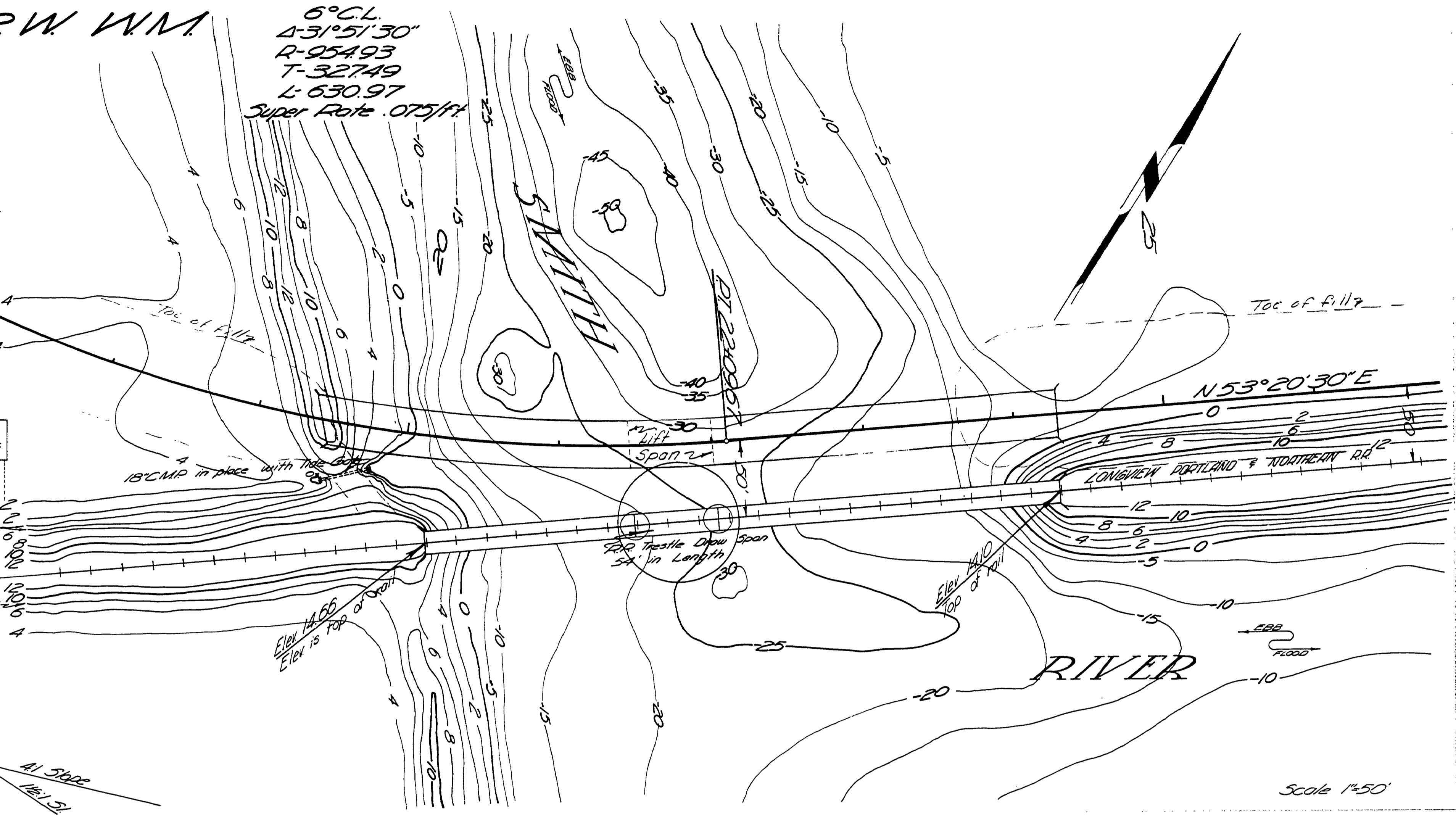
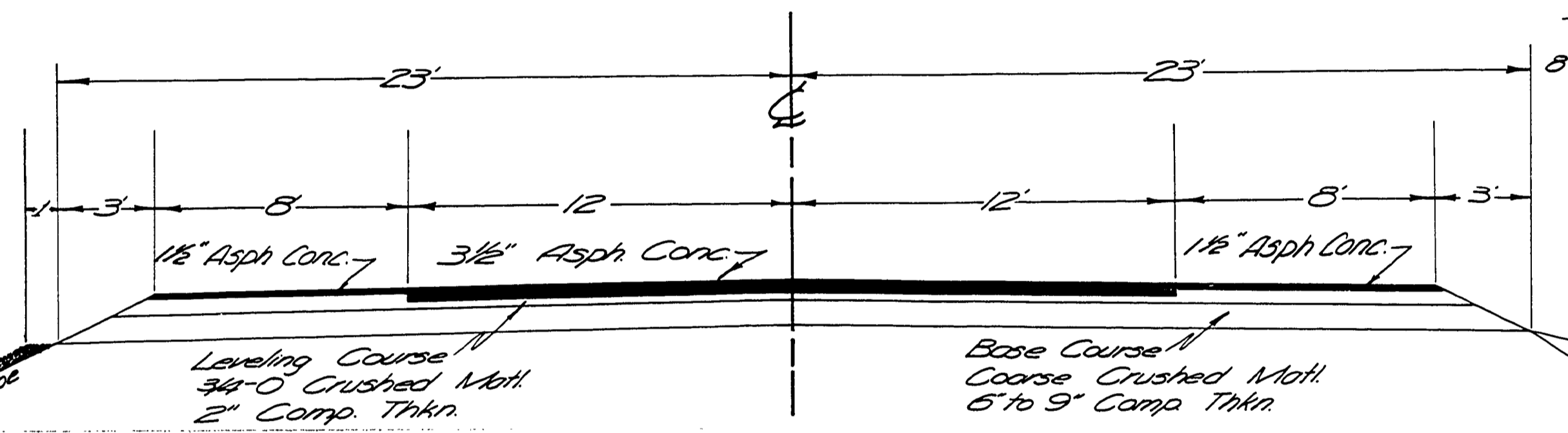
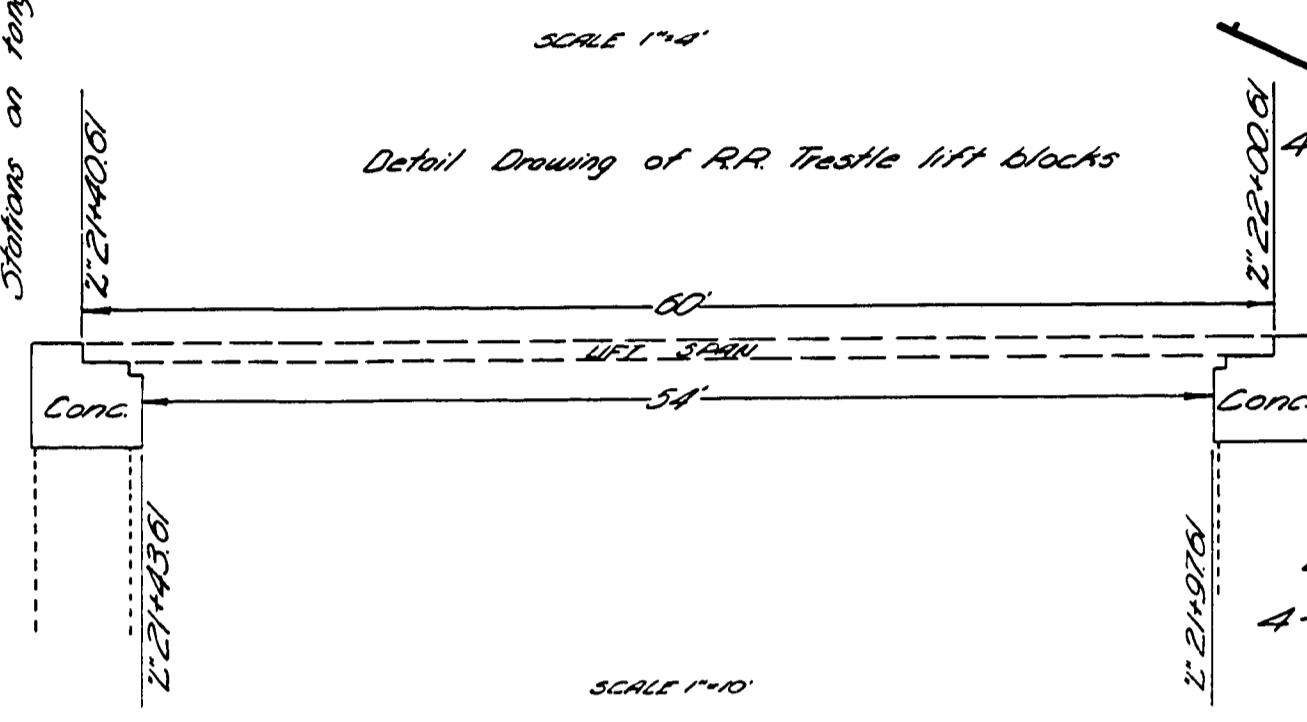
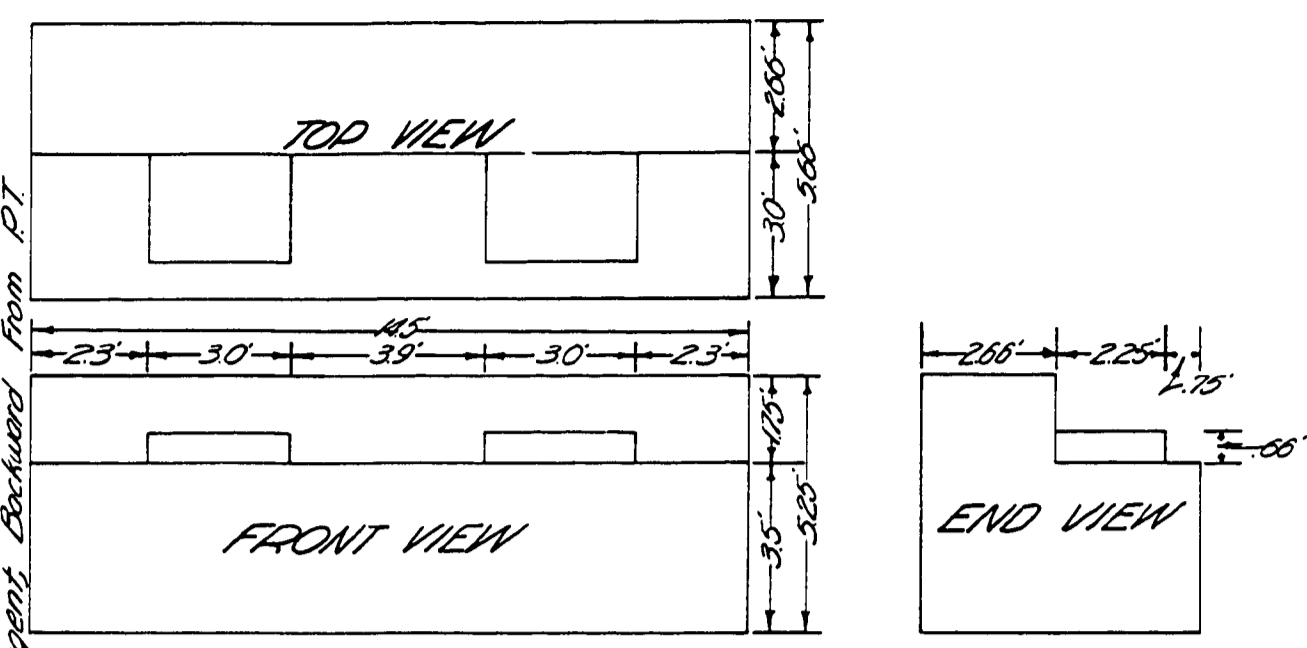
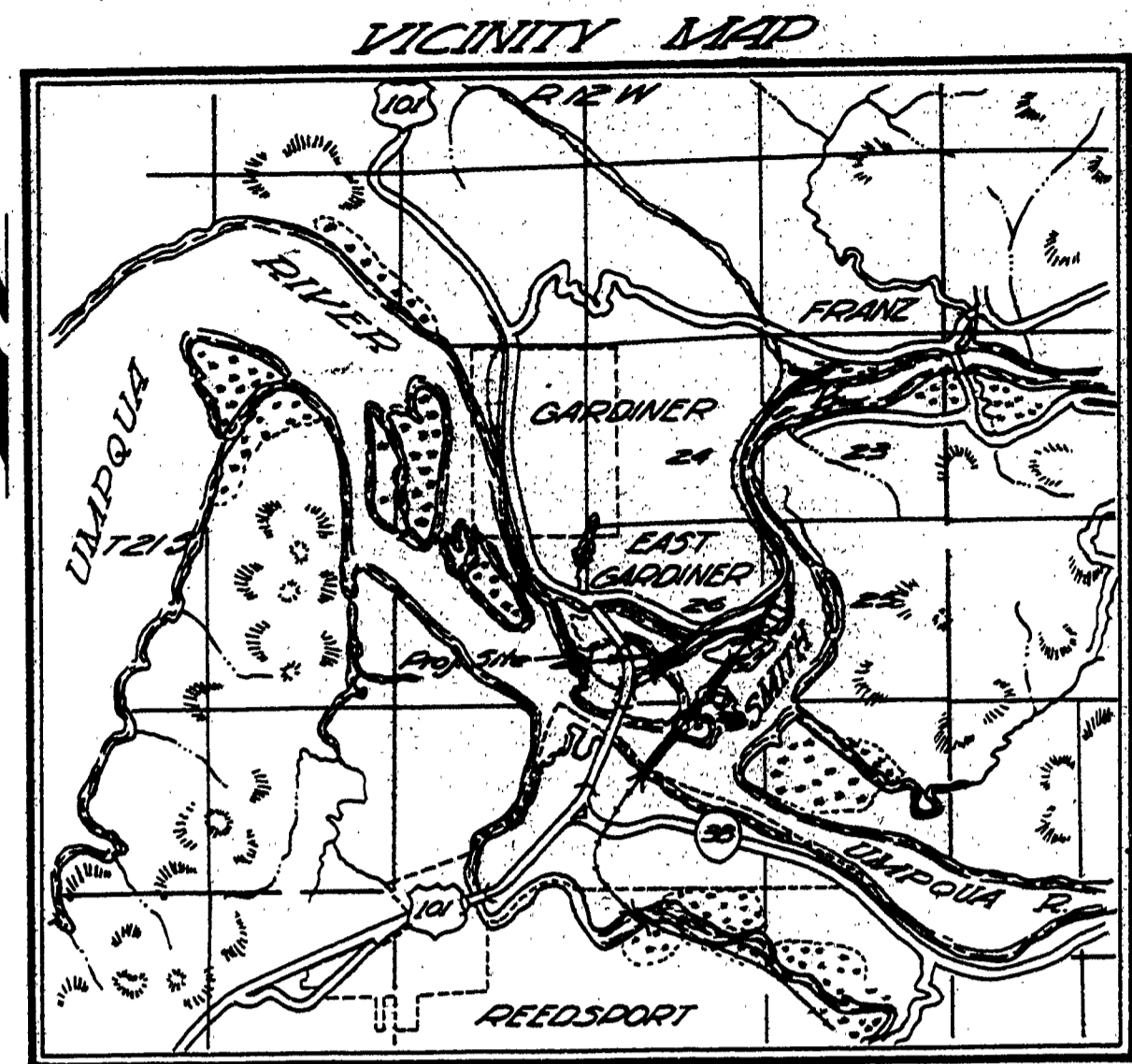


Sec. 26 T21S R12W W.M.

6° C.L.
 4-31° 51' 30"
 R-95493
 T-32749
 L-63097
 Super Rate .075/ft



SMITH RIVER BRIDGE
 BALON ISLAND TO JACK FRANK SLOUGH
 SMITH RIVER ROAD #48
 FAS 799
 Douglas County Oregon
 A.H. MAY County Engineer

00000017