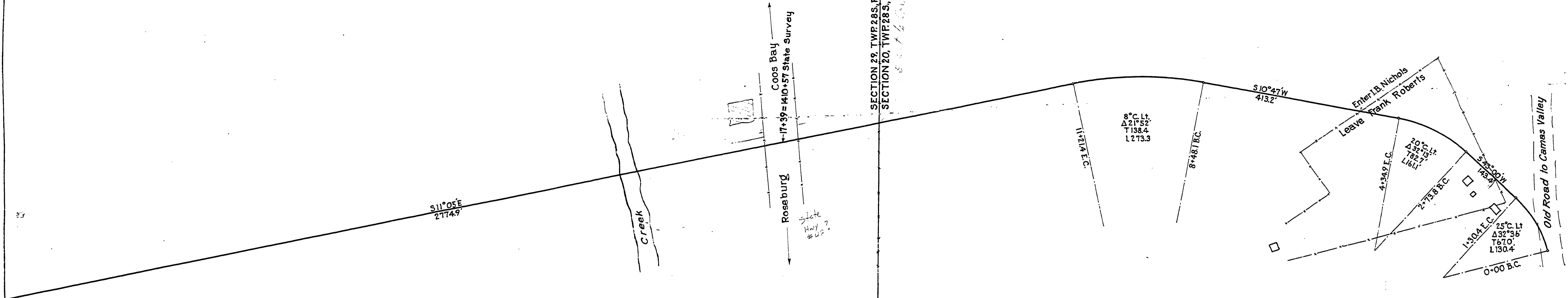
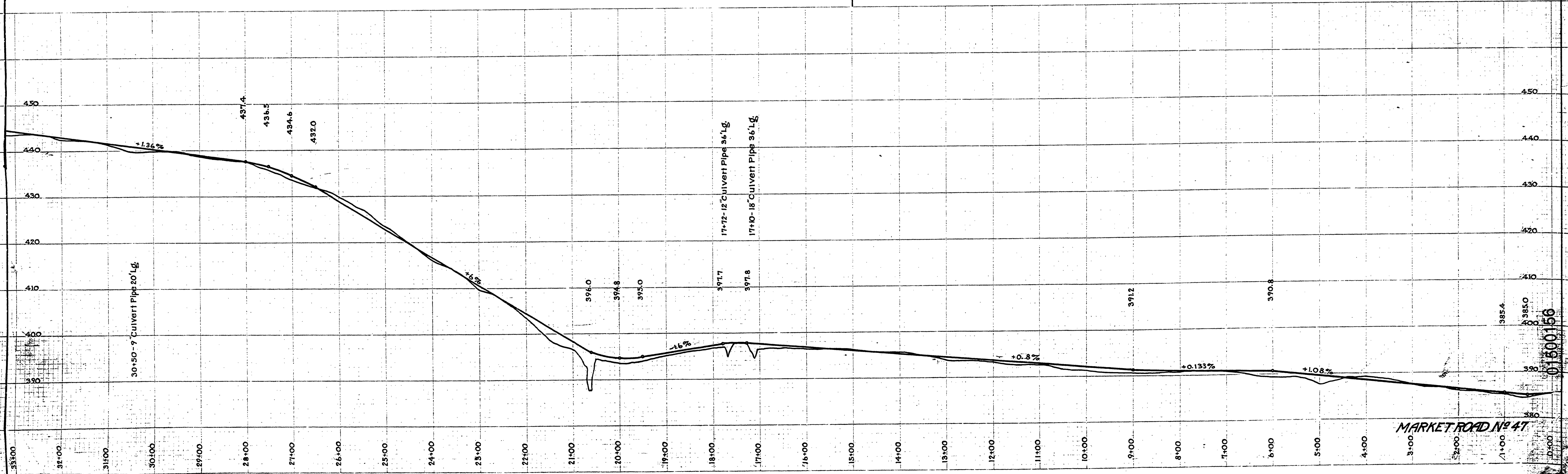


Ada D. Nichols to Douglas County
 40' Right of Way Consideration 452⁰⁰
 Sta. 3+15 to 43+10
 Road Record 8 Page 405

Frank Roberts to Douglas County
 40' Right of Way Consideration 250⁰⁰
 Sta. 1+98 to Sta. 5+15
 Road Record 8 Page 406



**DOUGLAS COUNTY HIGHWAY
 IMPROVEMENT
 PROFILE AND ALIGNMENT
 DILLARD-BROCKWAY ROAD
 SHEET NO. 1
 SECTIONS 20 & 29, TWP. 28S., RANGE 6 W.W.M.
 STA. 0+00 TO STA. 66+00
 OFFICE OF
 F. C. FREAR
 COUNTY ROADMASTER
 OCTOBER 1922
 SCALE 1 in. = 100 ft.**



MARKET ROAD No. 47

