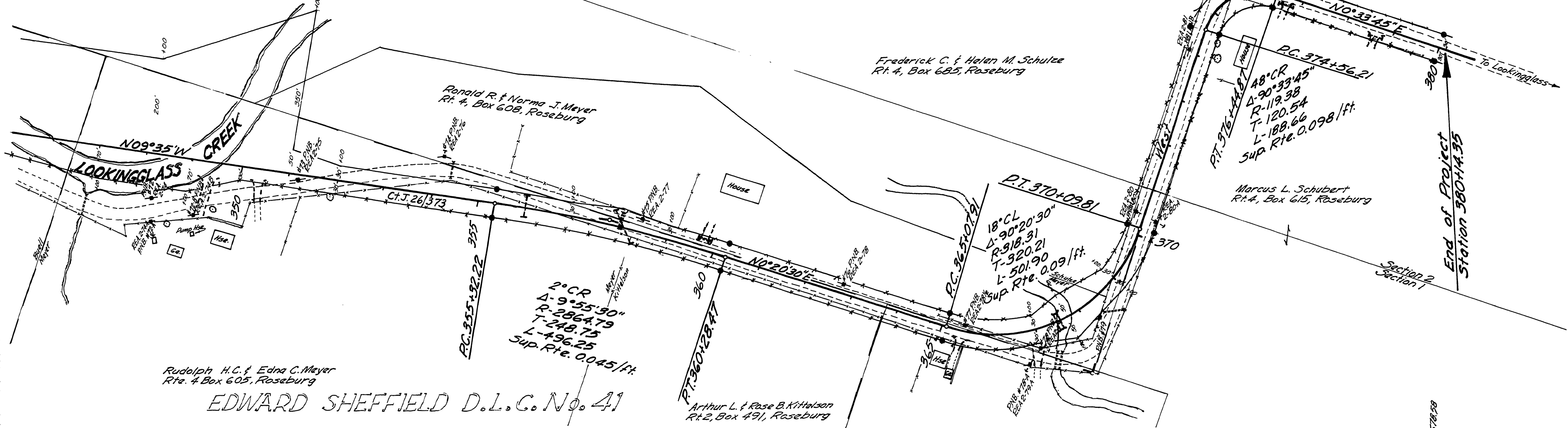
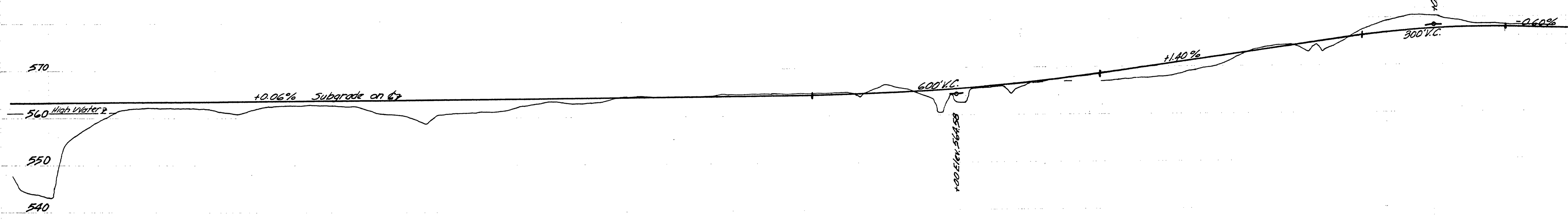


T.28S, R.7W, W.M.

JOSEPH HUNTLEY D.L.C. No. 40



● Indicates 3/4" Iron Pins & 4x4 Posts.



350 355 360 365 370 375

FILED RECEIVED  
COUNTY SURVEYOR  
DOUGLAS COUNTY, ORE.

Douglas County Road Dept.  
BROCKWAY-LOOKINGGLASS Rd. 47  
Date 2-13-64 Sheet 5 of 5  
A.H. May County Engr.

C. Rd # 47  
2-13-64  
-H. 5 of 5

06410698

M.P. 6.41-6.98

76