

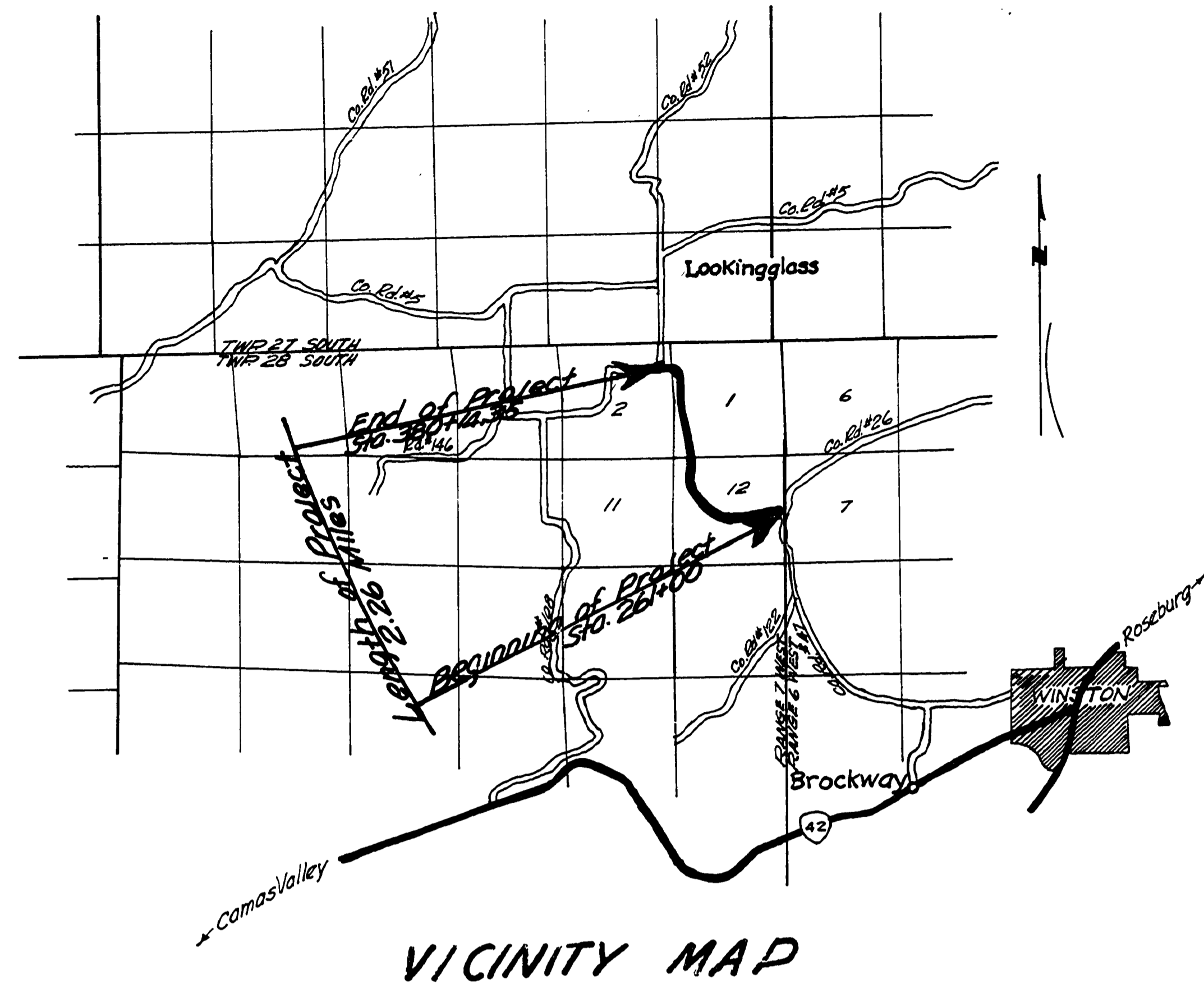
DOUGLAS COUNTY OREGON

PLANS FOR PROPOSED PROJECT

Grading and Surfacing

BROCKWAY-LOOKINGGLASS

CO. RD. NO. 47



VICINITY MAP

Adopted by Resolution of
The County Court this 17th
day of April 1963

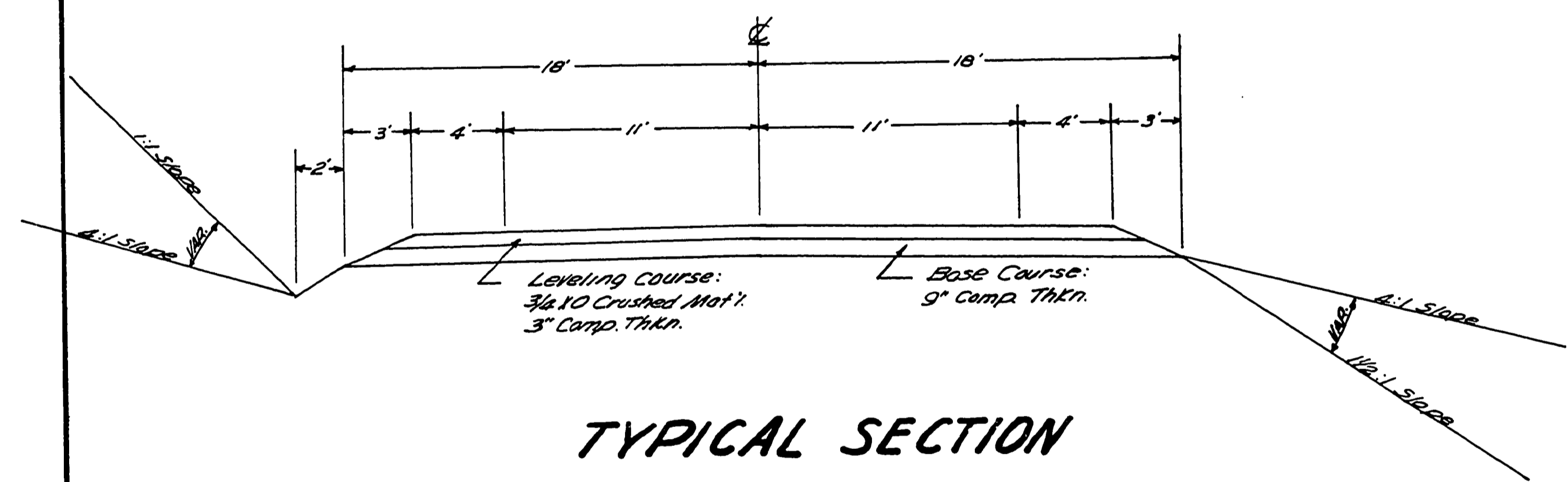
V. T. Jackson
JUDGE

[Signature]
COMMISSIONER

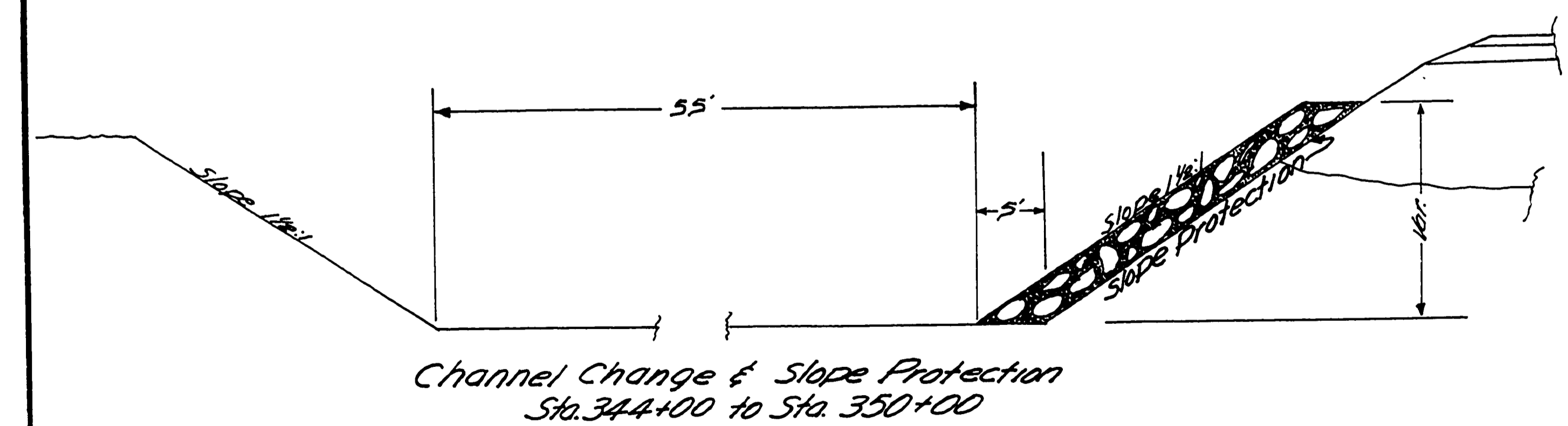
[Signature]
COMMISSIONER



Approved Al H. May Date 4/10/63
COUNTY ENGINEER



TYPICAL SECTION



Channel Change & Slope Protection
Sta. 344+00 to Sta. 350+00

DESIGNED BY
D.E.C. - R
COUNTY SURVEYOR
DOUGLAS COUNTY, OREGON

0472069C