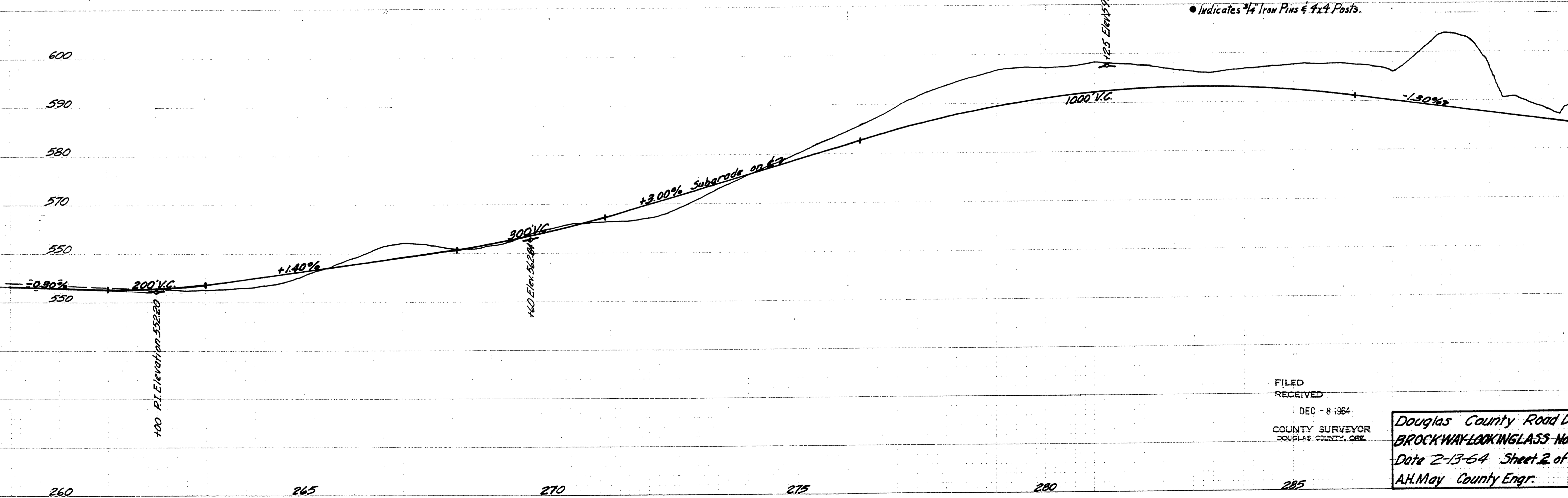
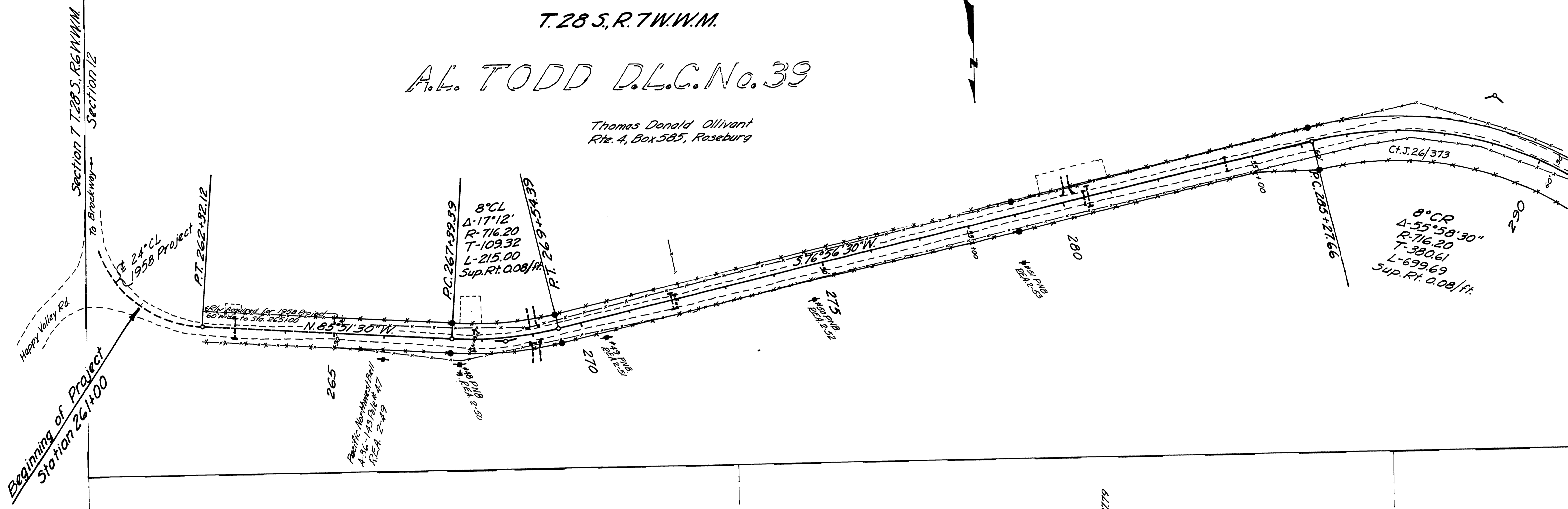


T.28 S., R.7 W., W.M.

A.L. TODD D.L.C. No. 39

Thomas Donald Olivant
Rte. 4, Box 585, Roseburg



FILED
RECEIVED
DEC - 8 1964
COUNTY SURVEYOR
DOUGLAS COUNTY, ORE.

Douglas County Road Data
BROCKWAY LOOKING GLASS No. 47
Date 2-13-64 Sheet 2 of 5
A.H. May County Engr.

04720527

G. R. #47
2-13-64
Sht. 2 of 5 (23)

M.P. 4.72-5.27

ORIGINAL SURVEY MAPS AND RECORDS
DOUGLAS COUNTY, OREGON
COUNTY ENGINEER
A. H. MAY