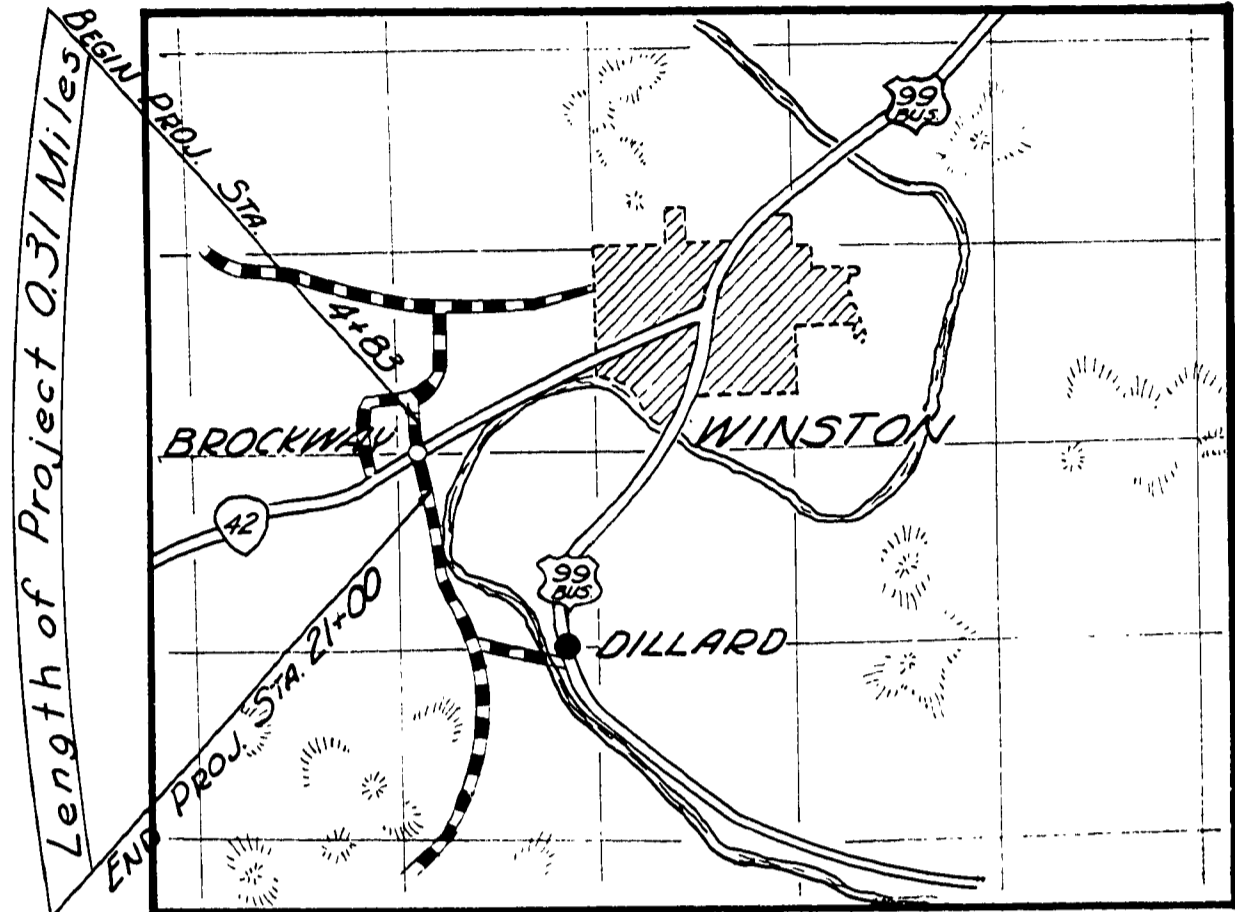
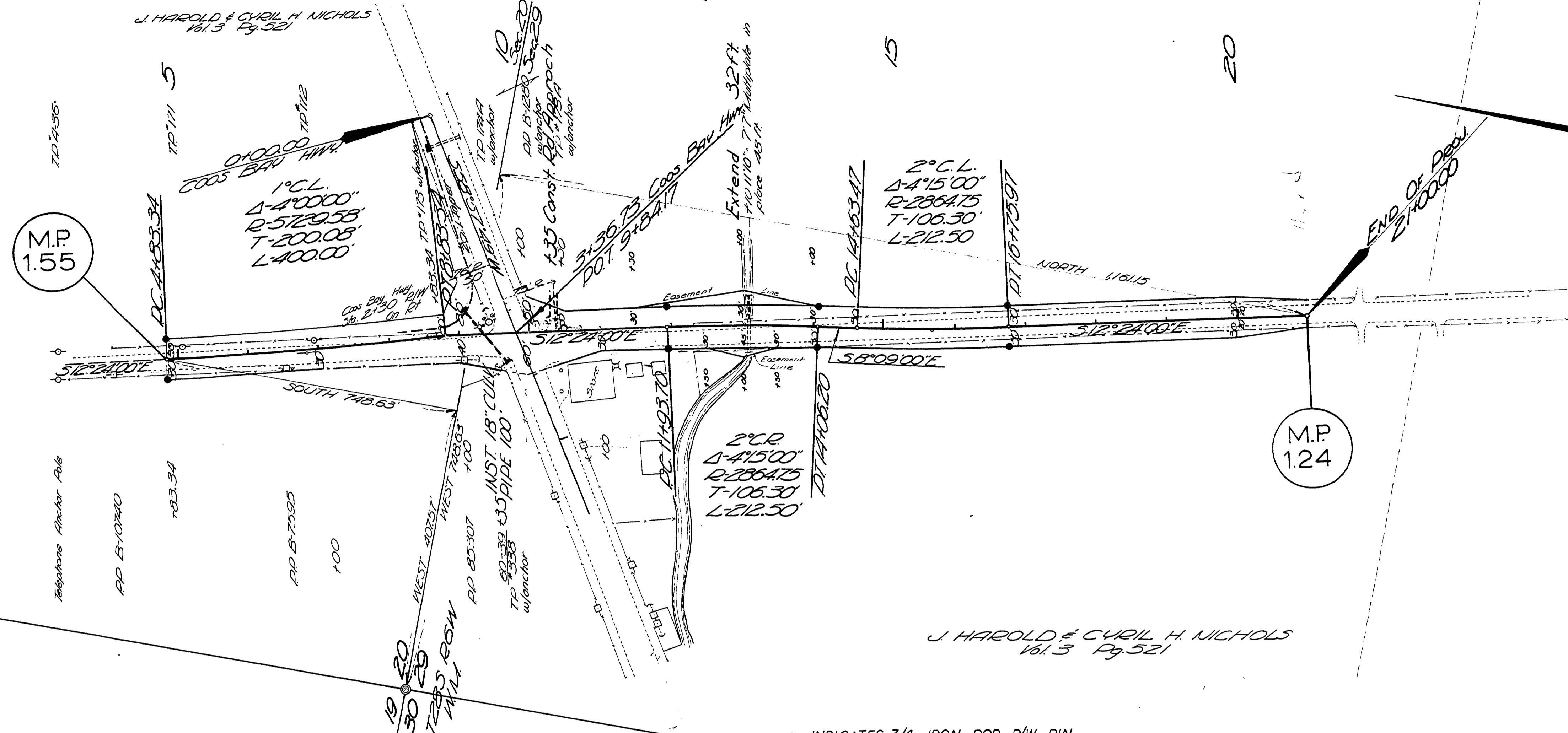
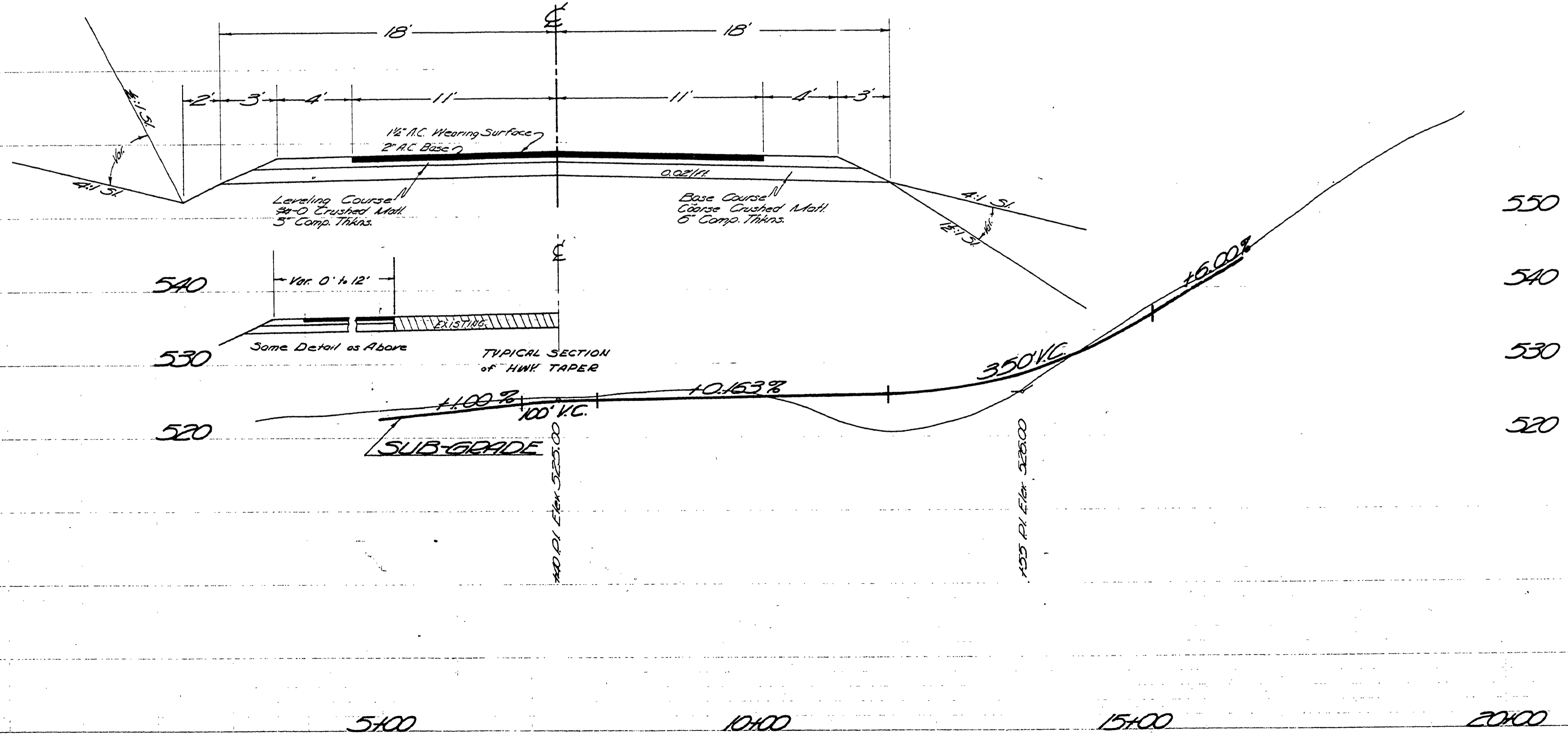


SECS 20 & 29 T28S R6W W.M.



J HAROLD & CYRIL H. NICHOLS  
161.3 Pg. 521

• INDICATES 3/4 IRON ROD R/W PIN



As Constructed 4-3-70 D.S.  
DOUGLAS COUNTY ROAD DEPT.  
BROCKWAY CO. ROAD  
DATE 1968 SHEET 1 OF 1  
GEORGE E. GRUBB COUNTY ENG.

M.P. 1.55 - 1.24

1968  
Co. Rd. # 47 skt 1 of 1 (26)

01550124