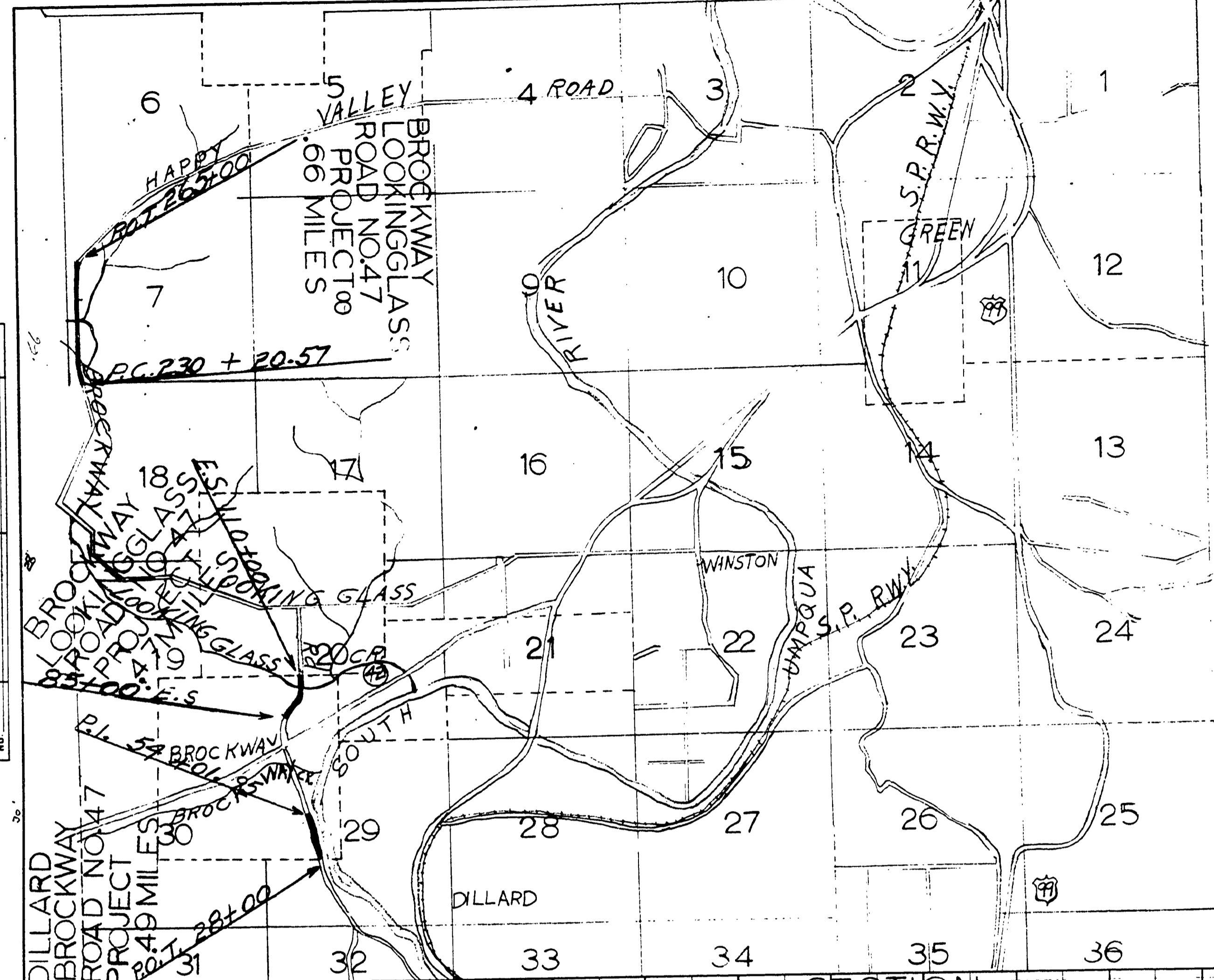


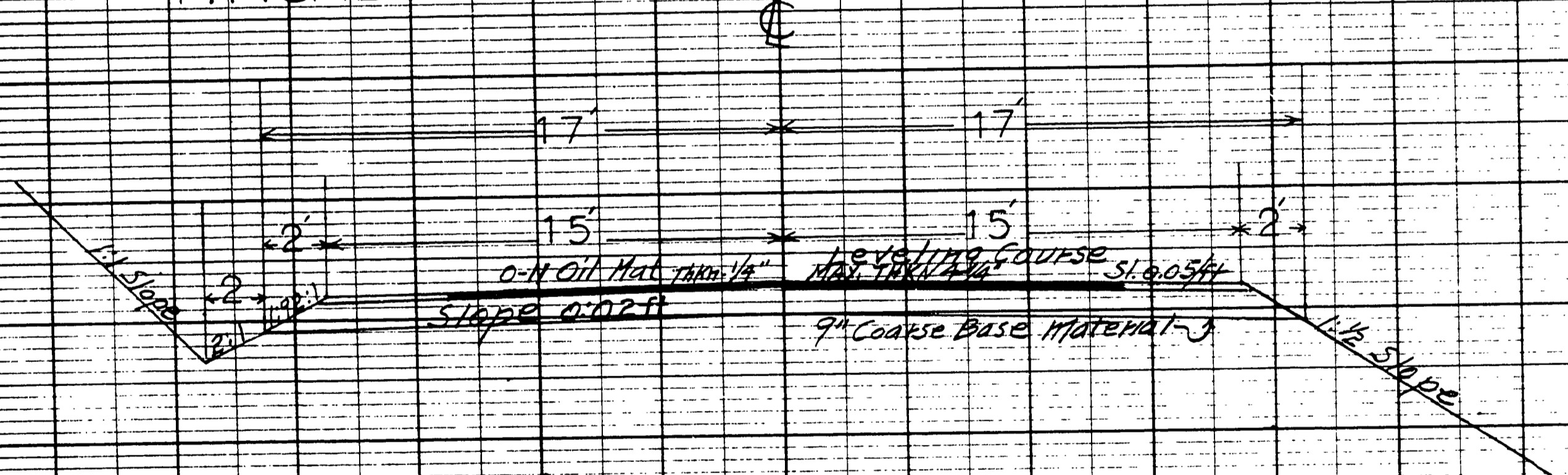
TWP. 28 S. - RNG. 6 W.W.M. TO ROSEBURG



DOUGLAS COUNTY OREGON  
 PLANS FOR PROJECT  
 GRADING  
 DILLARD BROCKWAY ROAD  
 BROCKWAY LOCKING GLASS ROAD  
 COUNTY ROADS NO. 47  
 JAN. 1957 — MARCH 1957



TYPICAL SECTION



PLAN

DATE	
BY	
CHECKED	
APPROVED	
NO.	

PROFILE

DATE	
BY	
CHECKED	
APPROVED	
NO.	

0058047C