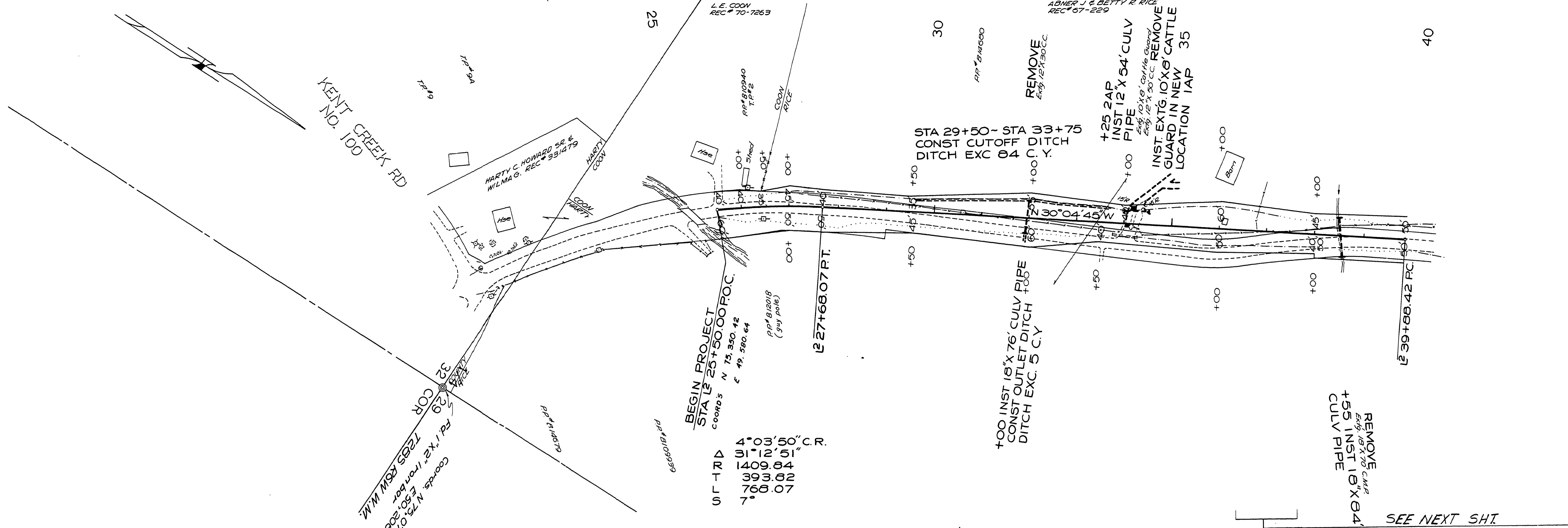


S29,S32 T28S R6W W.M.



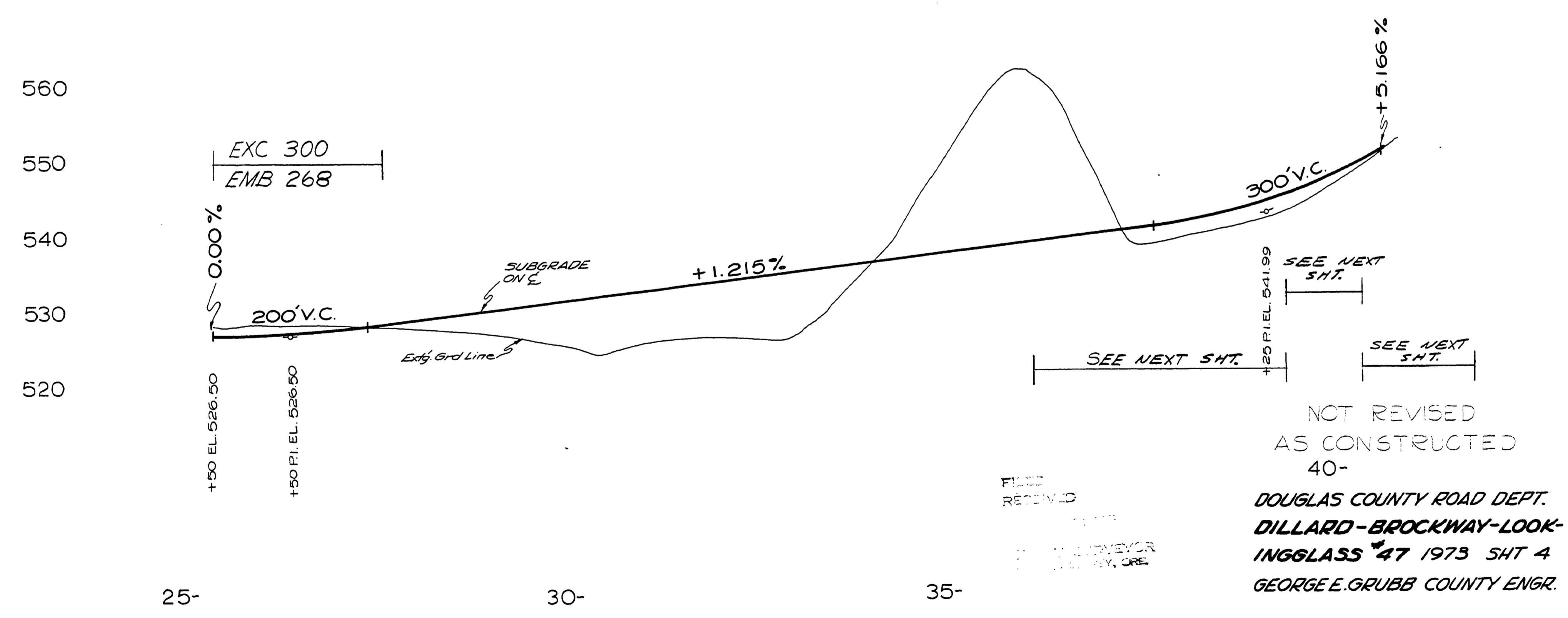
STATION DATA

4°03'50" C.R.
31°12'51"
1409.84
393.82
768.07
7'

EXC. 6423
EMB. 5735

SEE NEXT SHT.

SEE NEXT SHT.



NOT REVISED
AS CONSTRUCTED
40-
DOUGLAS COUNTY ROAD DEPT.
DILLARD-BROCKWAY-LOOK-
INGGLASS #47 1973 SHT 4
GEORGE E. GRUBB COUNTY ENGR.

FILED
RECEIVED
1973
NOV 15 10 30 AM
COUNTY ENGINEER

25-

30-

35-

M.P. 0.47 - 0.74

1973
C. RD #47 SHT. 4 of 6 (88)

00470074