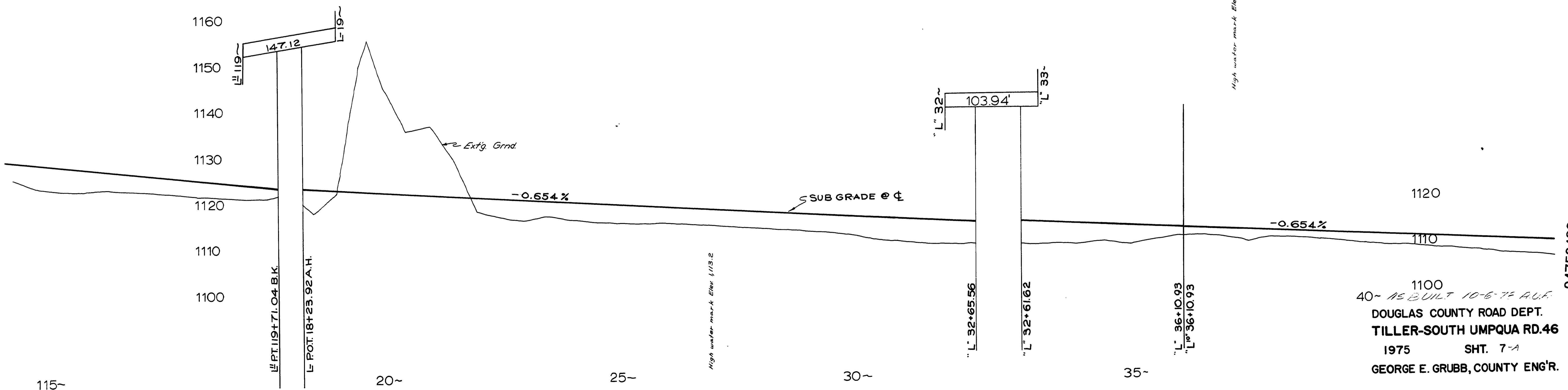


Δ 40° C.L.
 Δ 43° 34' 32"
 Δ 572.96
 Δ 229.03
 Δ 435.70
 Δ 8%

+61 INST. 24"x60" CULV. PIPE REMOVE
 +18" 180' Conc. Culk REMOVE
 +18" 180' Conc. Culk REMOVE
 L 119+50 TO L 18+75 CONST. CUT OFF DITCH, 5 C.Y. DITCH EXC.
 Δ 15° 3' 5"
 Δ 1145.22 W.
 Δ 136.05
 Δ 270.83
 Δ 6%

L 22+25 TO L 24+60 CONST. CUT OFF DITCH 15 C.Y. DITCH EXC.
 Δ 22° 17' 41.04 BK
 Δ 190' 130' 20' 03.38 F.C.
 Δ 22° 17' 41.04 BK
 Δ 190' 130' 20' 03.38 F.C.

Δ 20° 57' 30"
 Δ 954.93
 Δ 176.63
 Δ 349.31
 Δ 8%



1100
 40' 15" BUILT 10-6-74 A.U.F.
 DOUGLAS COUNTY ROAD DEPT.
 TILLER-SOUTH UMPQUA RD. 46
 1975 SHT. 7-A
 GEORGE E. GRUBB, COUNTY ENGR.

1975
 C. Rd. #46 Sht. 7-A of 9-A (65)

M.P. 4.75-4.26

04750426