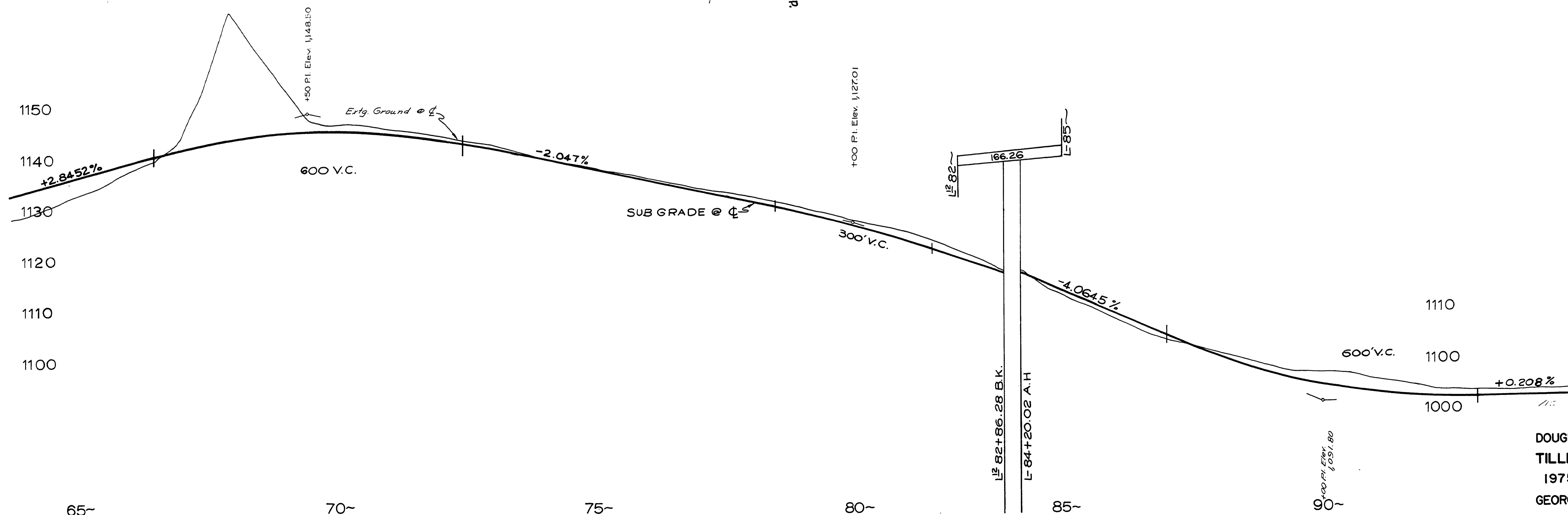
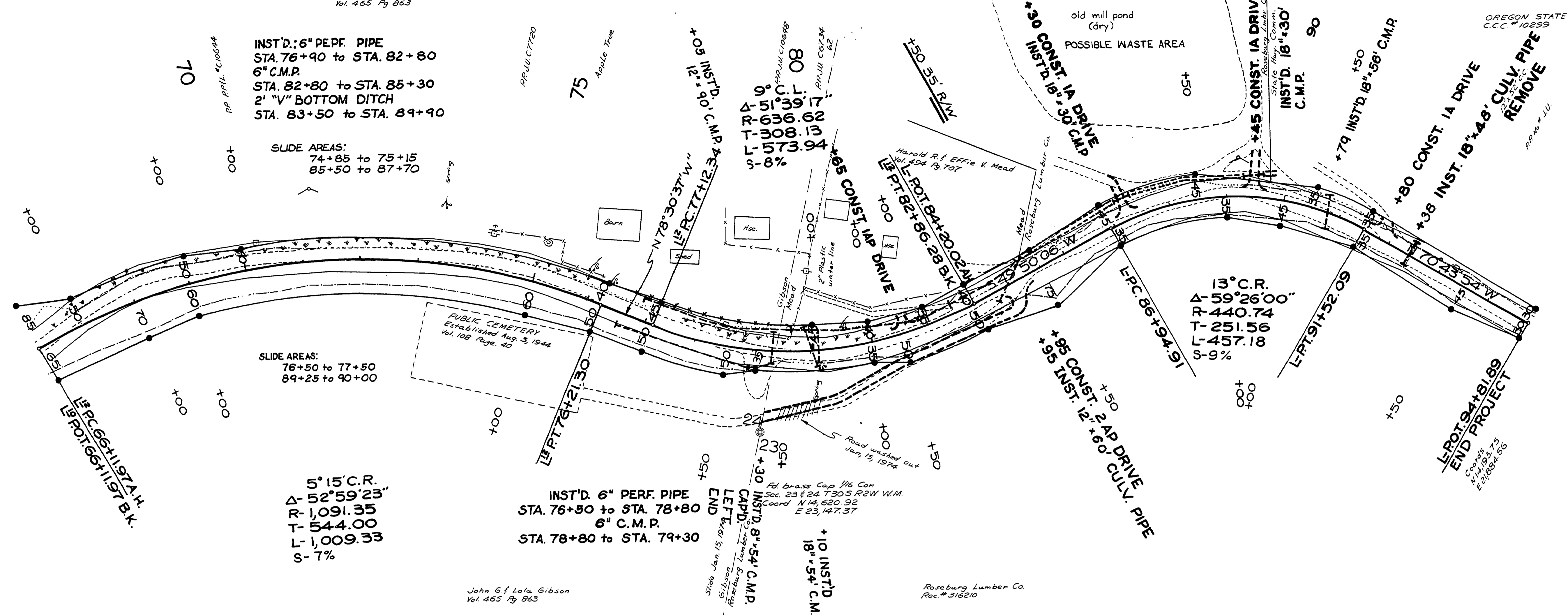


SEC. 23 & 24 T 30S R 2W WM

RD. 46

John G. f. Lela, Gibson  
Vol. 465 Pg. 863

OREGON STATE HIGHWAY COMMISSION  
C.C.C. # 10299



DOUGLAS COUNTY ROAD DEPT.  
TILLER-SOUTH UMPQUA RD. 46  
1975 SHT. 9-A  
GEORGE E. GRUBB, COUNTY ENGR.

03770333

1975  
C. R. # 46 SHT. 9-A of 9-A

M.P. 3.77 - 3.33

