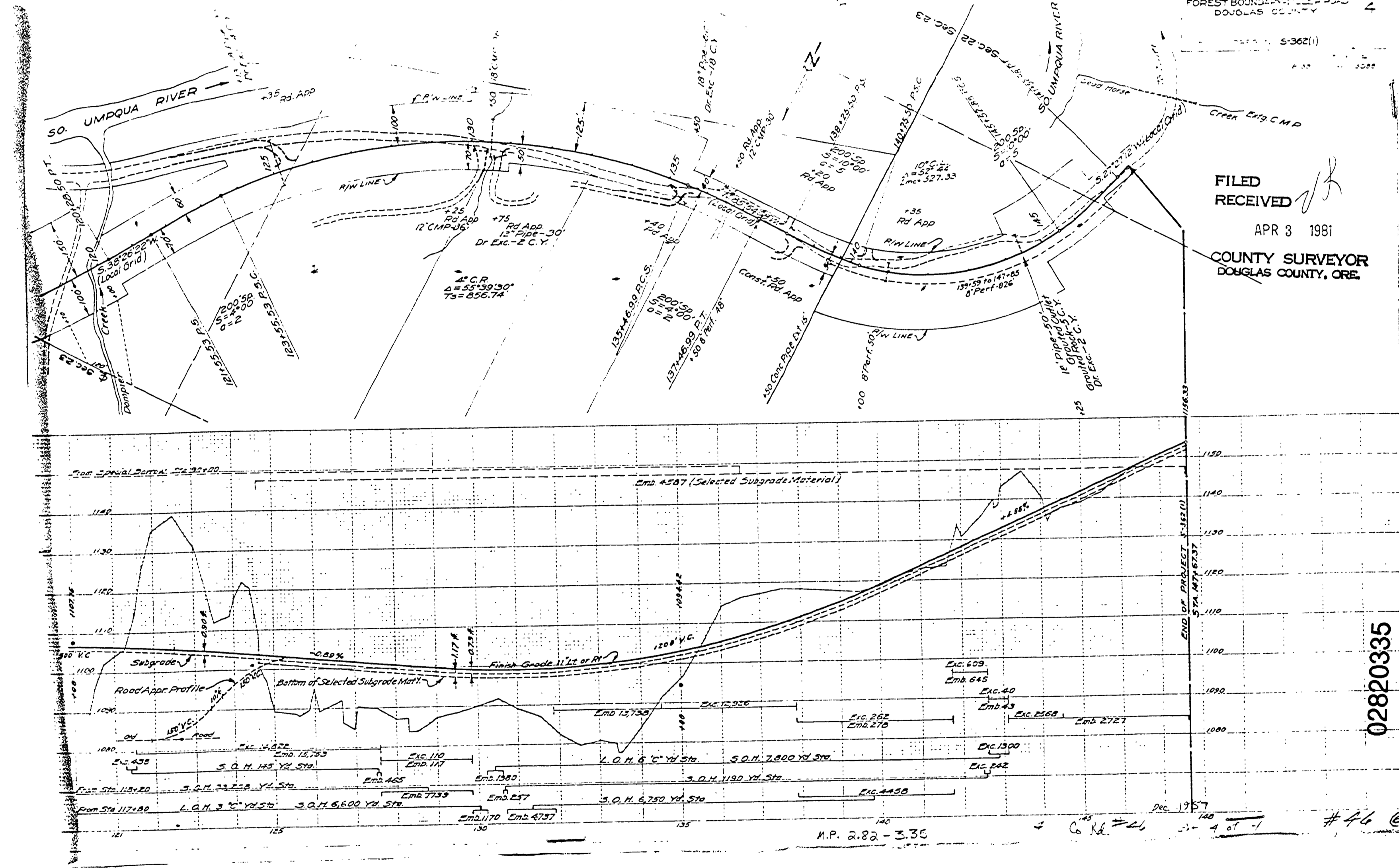


T. 35 S. R. 2 W. WM.

DOMPHER CREEK SECTION
FOREST BOUNDARY LINES
DOUGLAS COUNTY

FILED
RECEIVED
APR 3 1981
COUNTY SURVEYOR
DOUGLAS COUNTY, ORE.



02820335

H.P. 2.82 - 3.35

#46