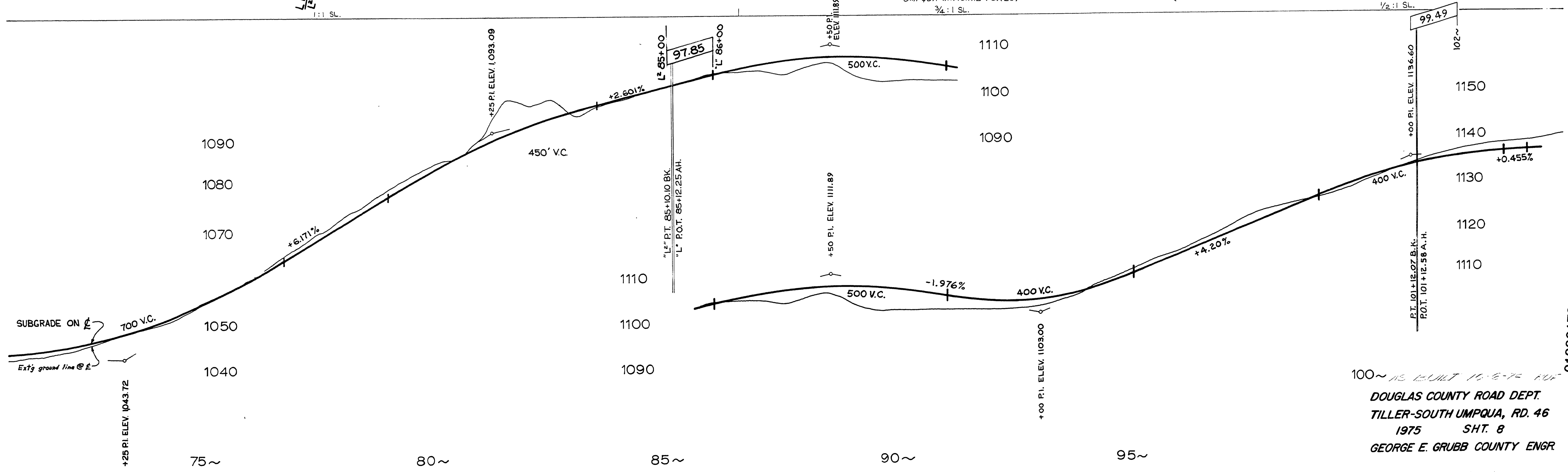
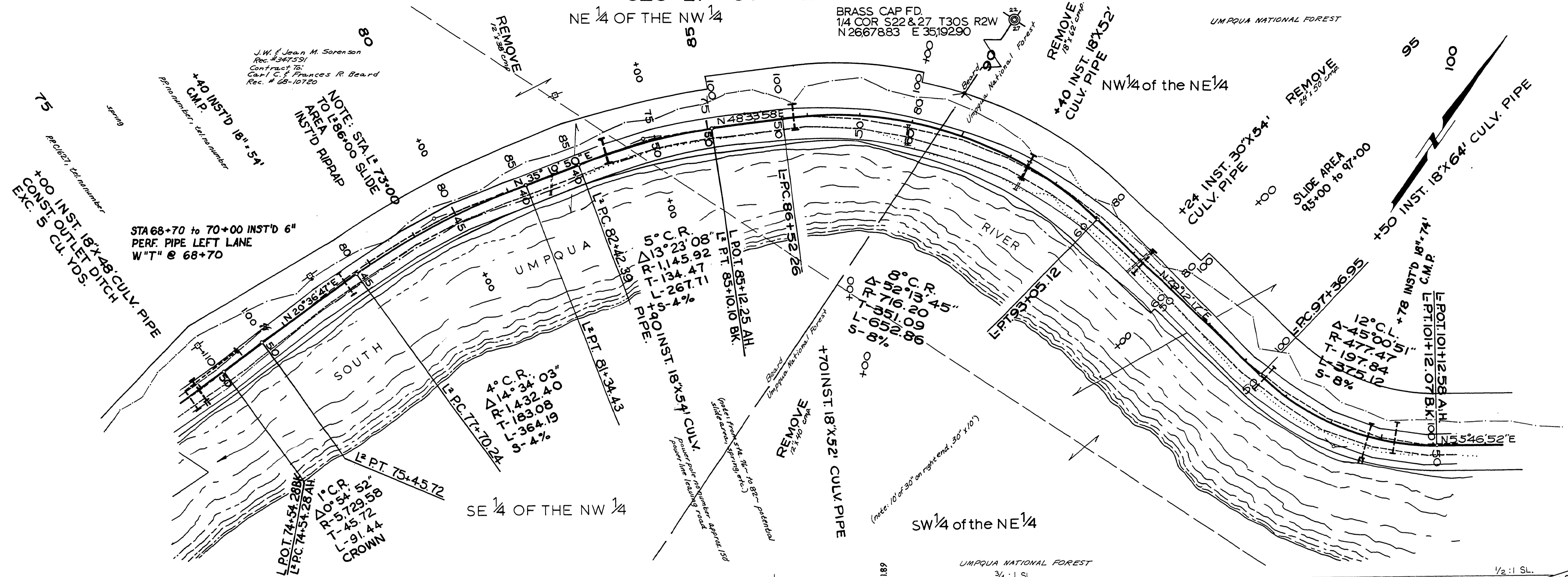


SEC 27 T30S R2W W.M.

NE 1/4 OF THE NW 1/4

BRASS CAP FD.  
1/4 COR S22 & 27 T30S R2W  
N 2667883 E 3519290

UMPQUA NATIONAL FOREST



100 ~ 115 UNIT 10-9-75 FOR  
DOUGLAS COUNTY ROAD DEPT.  
TILLER-SOUTH UMPQUA, RD. 46  
1975 SHT. 8  
GEORGE E. GRUBB COUNTY ENGR

1975  
Co. RD. # 46 SH. 8 of 10 (57)

M.P. 1.33-1.73

01330173