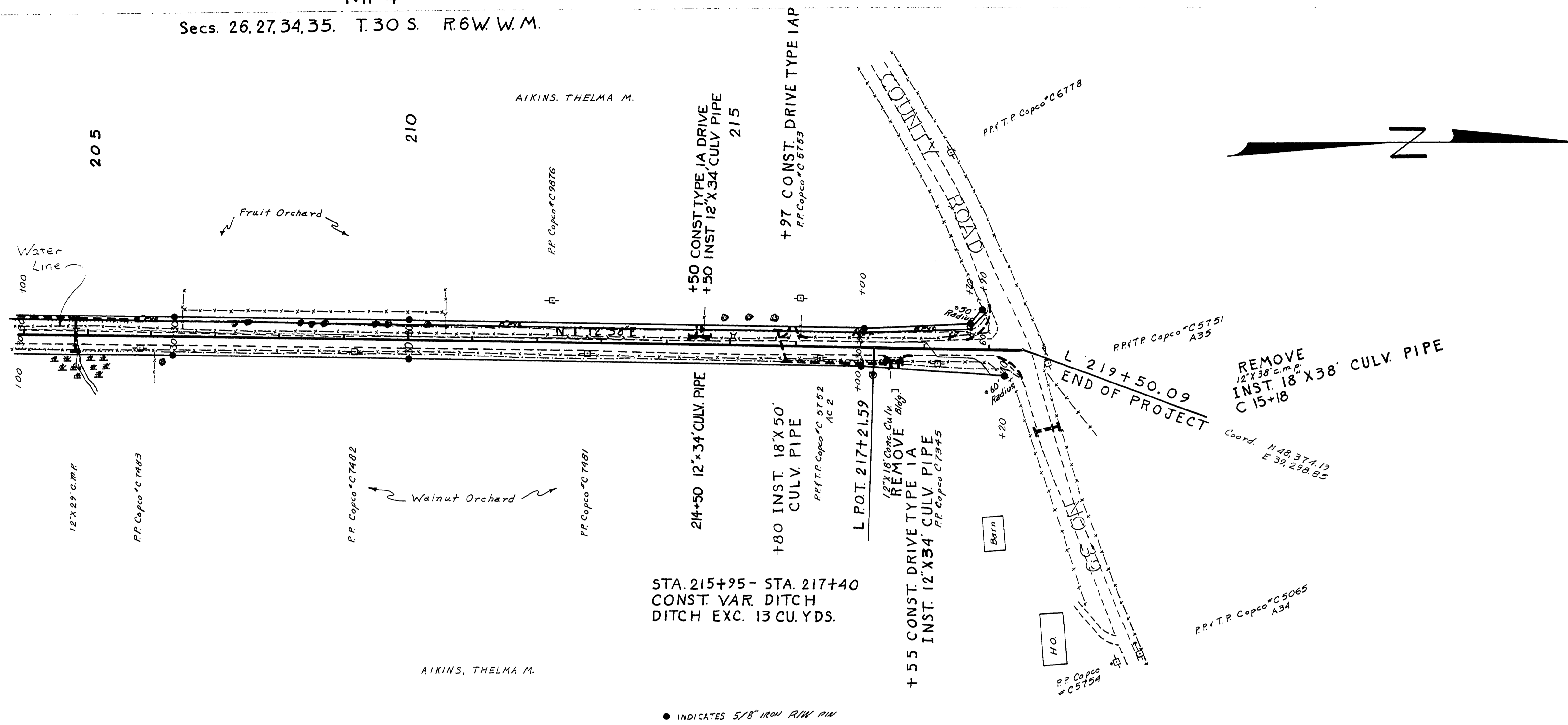


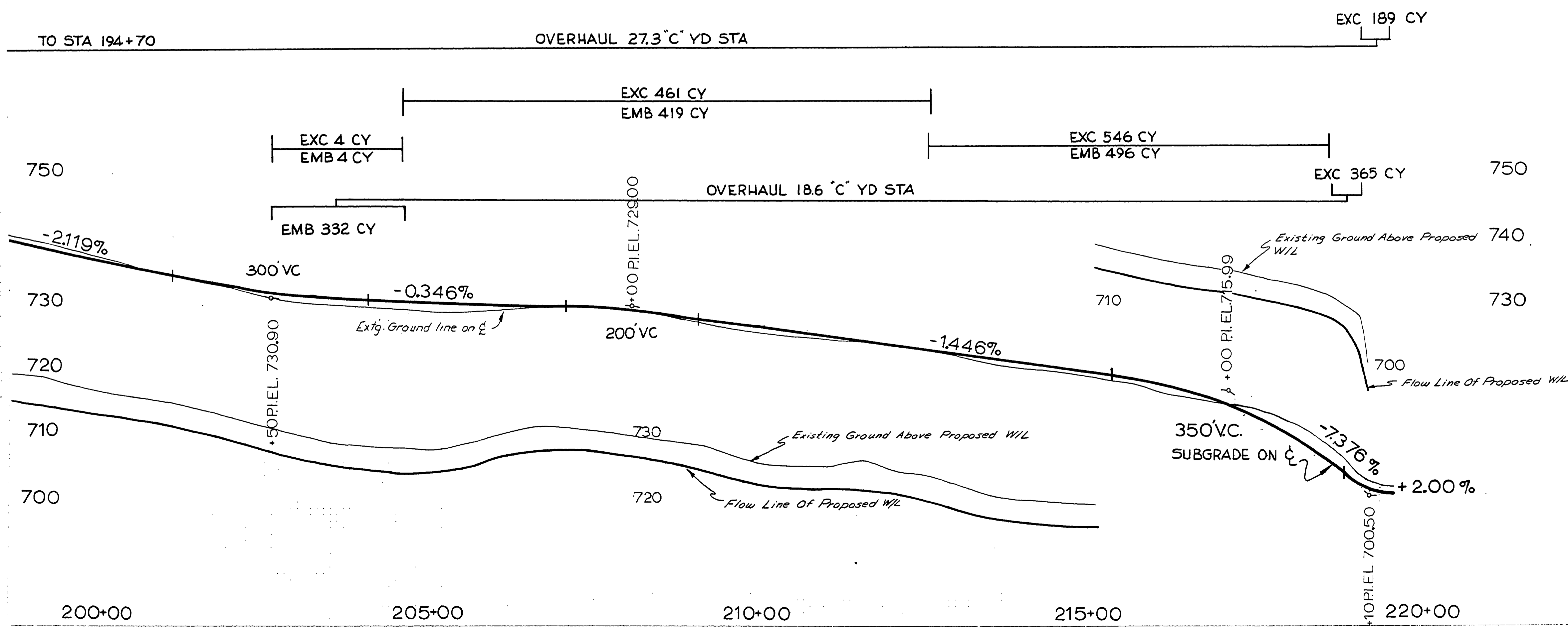
FILED
COUNTY ENGINEER
CLATSOP COUNTY, ORE.



T. 30 S. R. 6 W. W. M. 27
1/4 Cor. 26
D.L.C. #42
Int. "L"
Ft. Brass Cap
Coordinates
N. 49.541.72
E. 39.318.87

STA. 215+95 - STA. 217+40
CONST. VAR. DITCH
DITCH EXC. 13 CU. YDS.

● INDICATES 5/8" IRON R.I.W. PIN



NOT AS BUILT NOT AS CONSTRUCTED
Douglas County Road Dept.
SHOESTRING Road No. 44
Date: May 1970 Sheet 8
George E. Grubb County Eng.

03860414