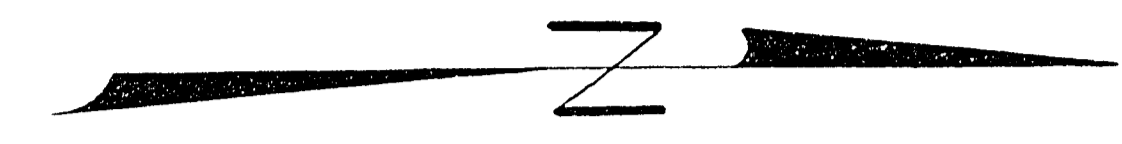


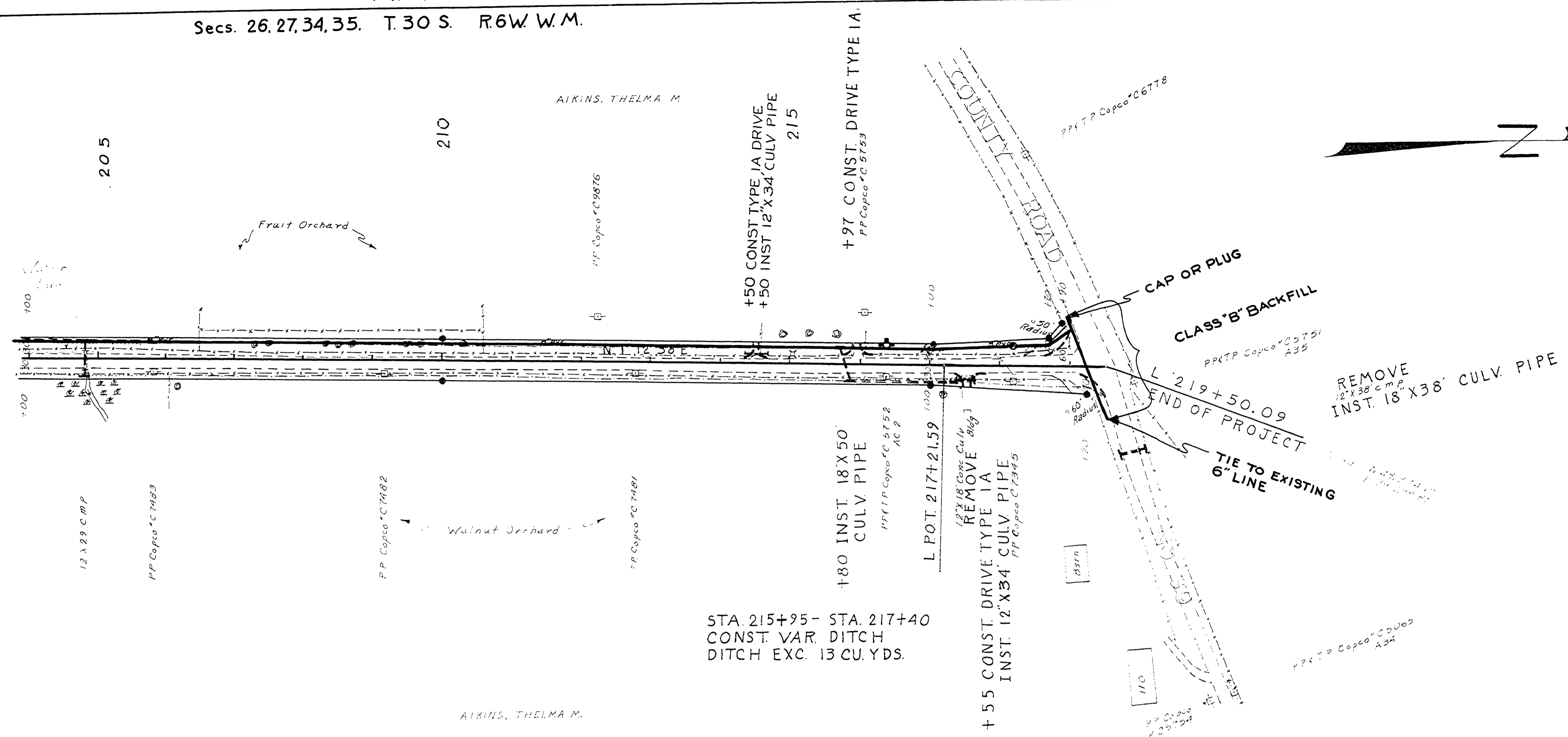
MP4
Secs. 26, 27, 34, 35, T. 30 S. R. 6 W. W. M.

FILED
RECEIVED
COUNTY SURVEYOR
DOUGLAS COUNTY, ORE.



PLAN	DATE
BY	
NO.	
NOTE BOOK	
NO.	
ALIGNED CHECKED	
RI OF WAY CHECKED	
NO.	

PROFILE	DATE
BY	
NO.	
NOTE BOOK	
NO.	
STRUCTURE NOTATIONS CHKD	
NO.	



T 30 S R 6 W W M 27
1/4 Cor. 26

D.L. C 42
Int. 'L'

Fd. Brass Cap
Coordinates
N 49 541.72
E 39 319.83

TO STA 194+70

OVERHAUL 27.3 C YD STA

EXC 189 CY

EXC 461 CY
EMB 419 CY

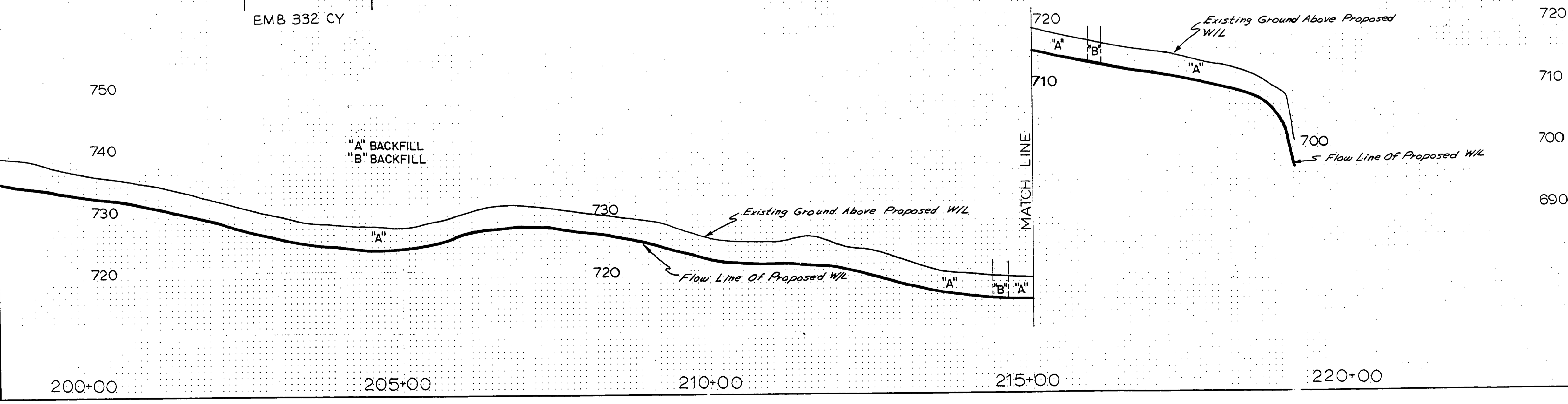
EXC 546 CY
EMB 496 CY

OVERHAUL 18.6 C YD STA

EXC 365 CY

EMB 332 CY

EXC 4 CY
EMB 4 CY



L.L.
NOT AS BUILT NOT AS CONSTRUCTED
DOUGLAS COUNTY
PUBLIC WORKS DEPARTMENT
SHOESTRING ROAD 44
1977 SHT. 5
GEORGE E. GRUBB, DIRECTOR

03820410