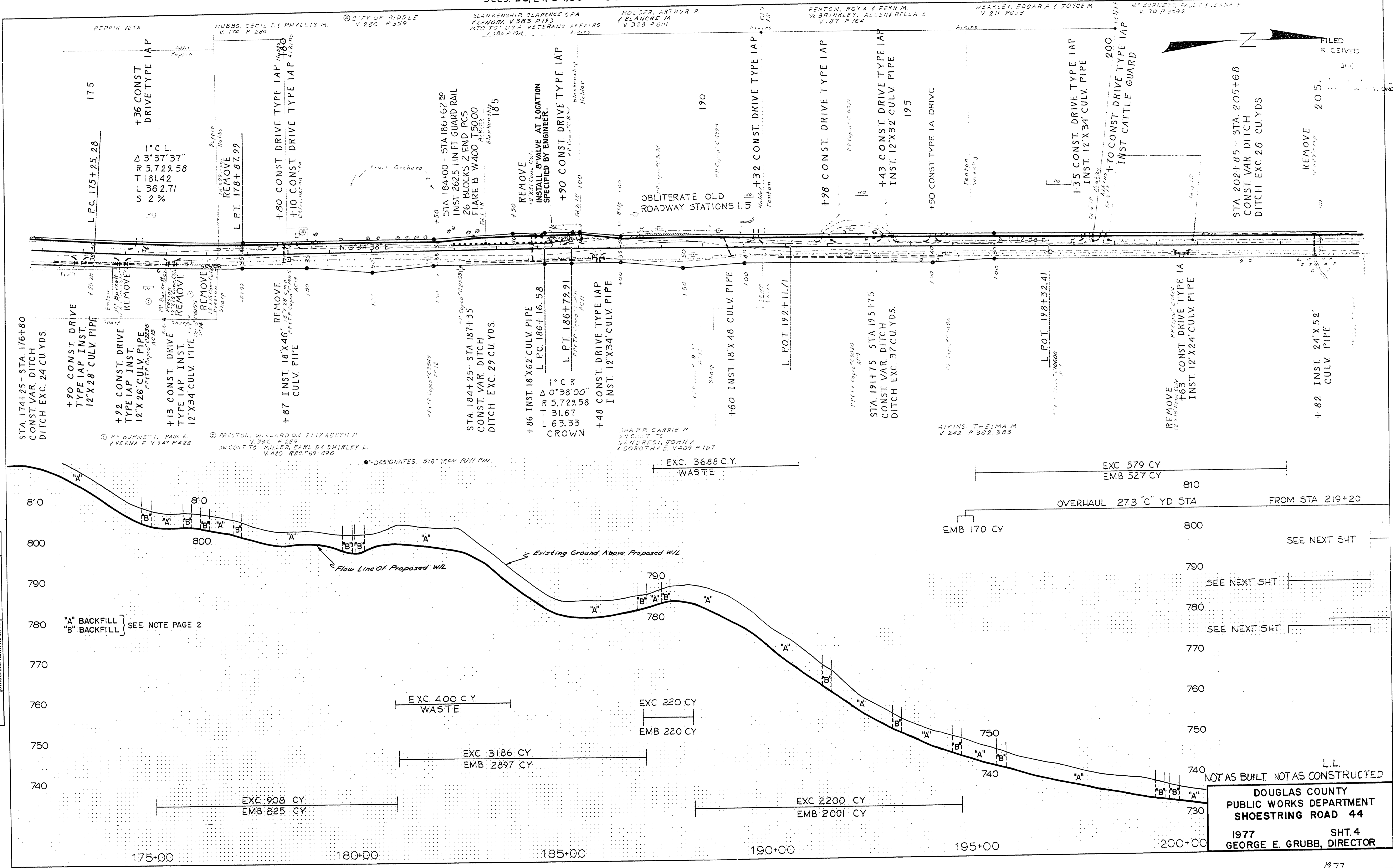


PLAN
SURVEYED
ALIGNED
NOTED
RT. OF WAY CHECKED
NO.
BY
DATE

PROFILE
GRADES CHECKED
STRUCTURE NOTATIONS CHECKED
NOTE BOOK
NO.
BY
DATE



DOUGLAS COUNTY
PUBLIC WORKS DEPARTMENT
SHOESTRING ROAD 44
1977 SHT. 4
GEORGE E. GRUBB, DIRECTOR

03250382