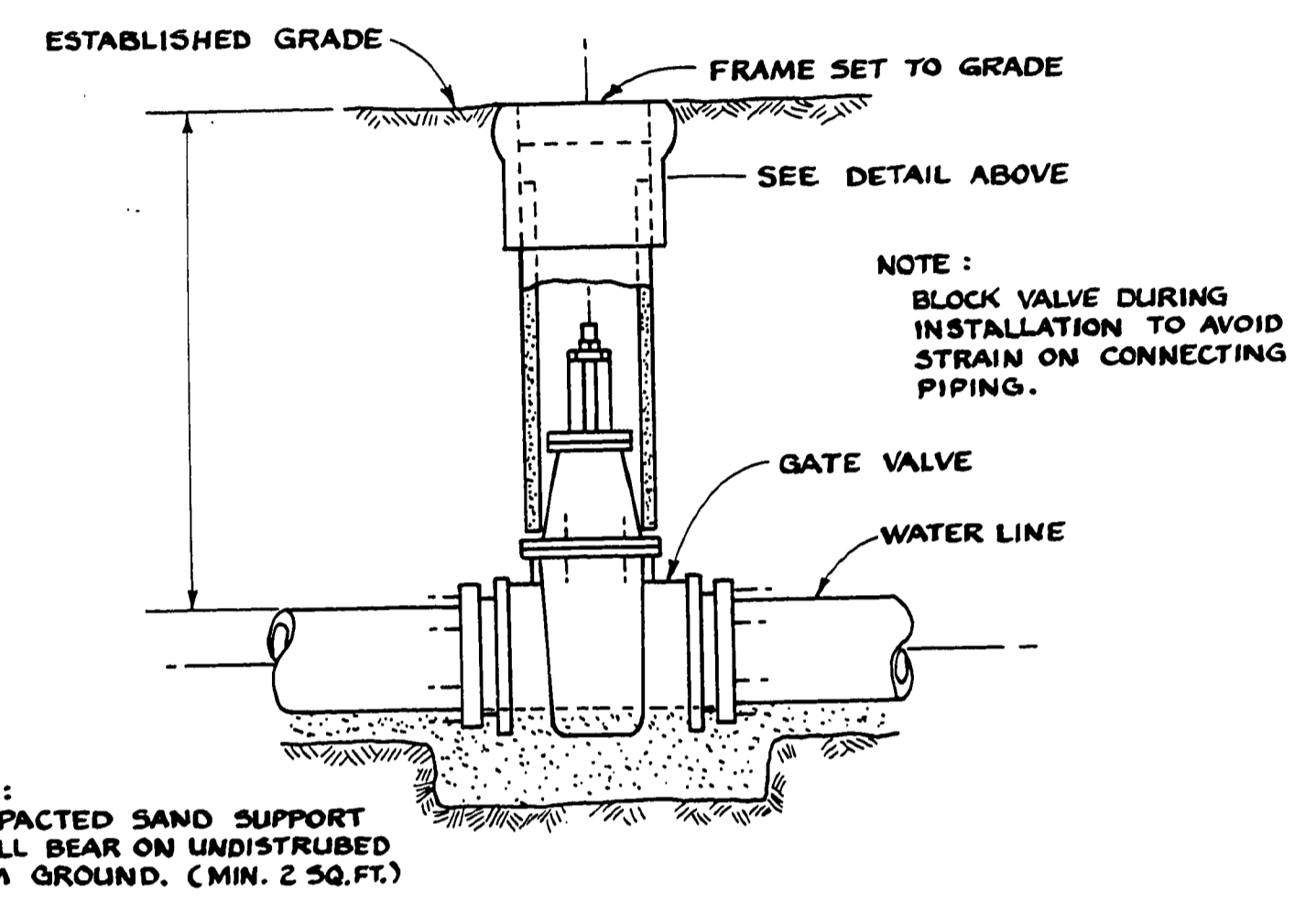
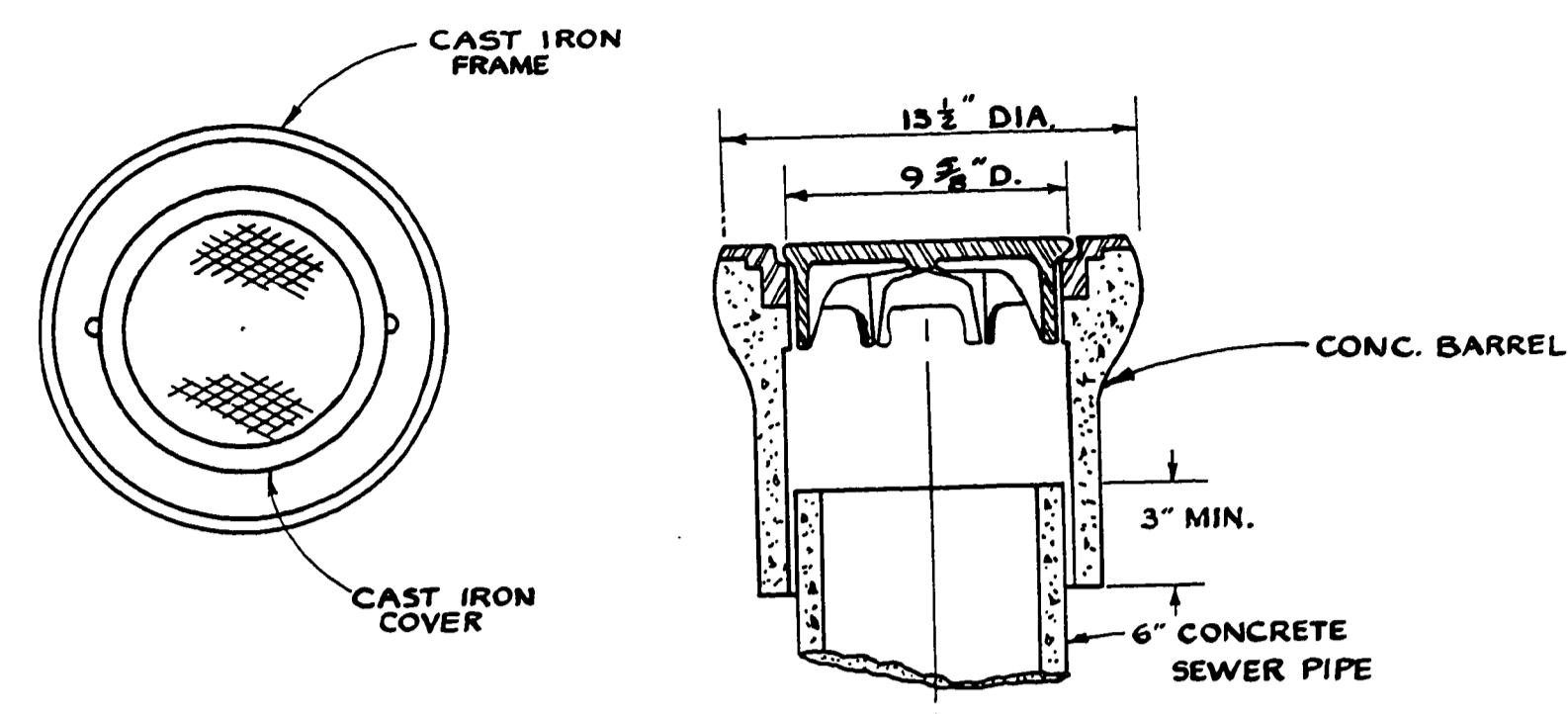
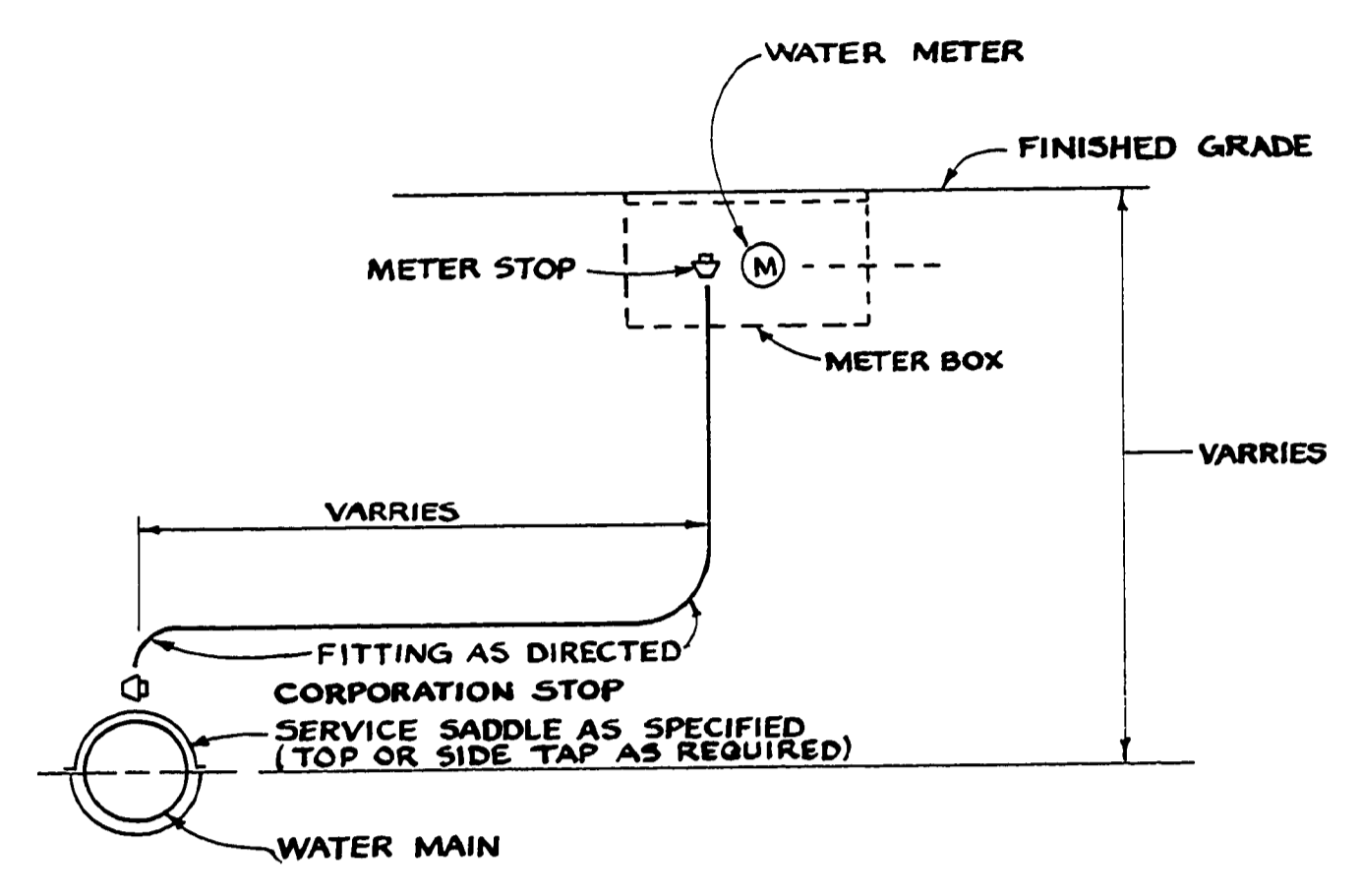


FILED
RECEIVED
AUG 31 1977
CITY SURVEYOR
MILWAUKEE, WIS.

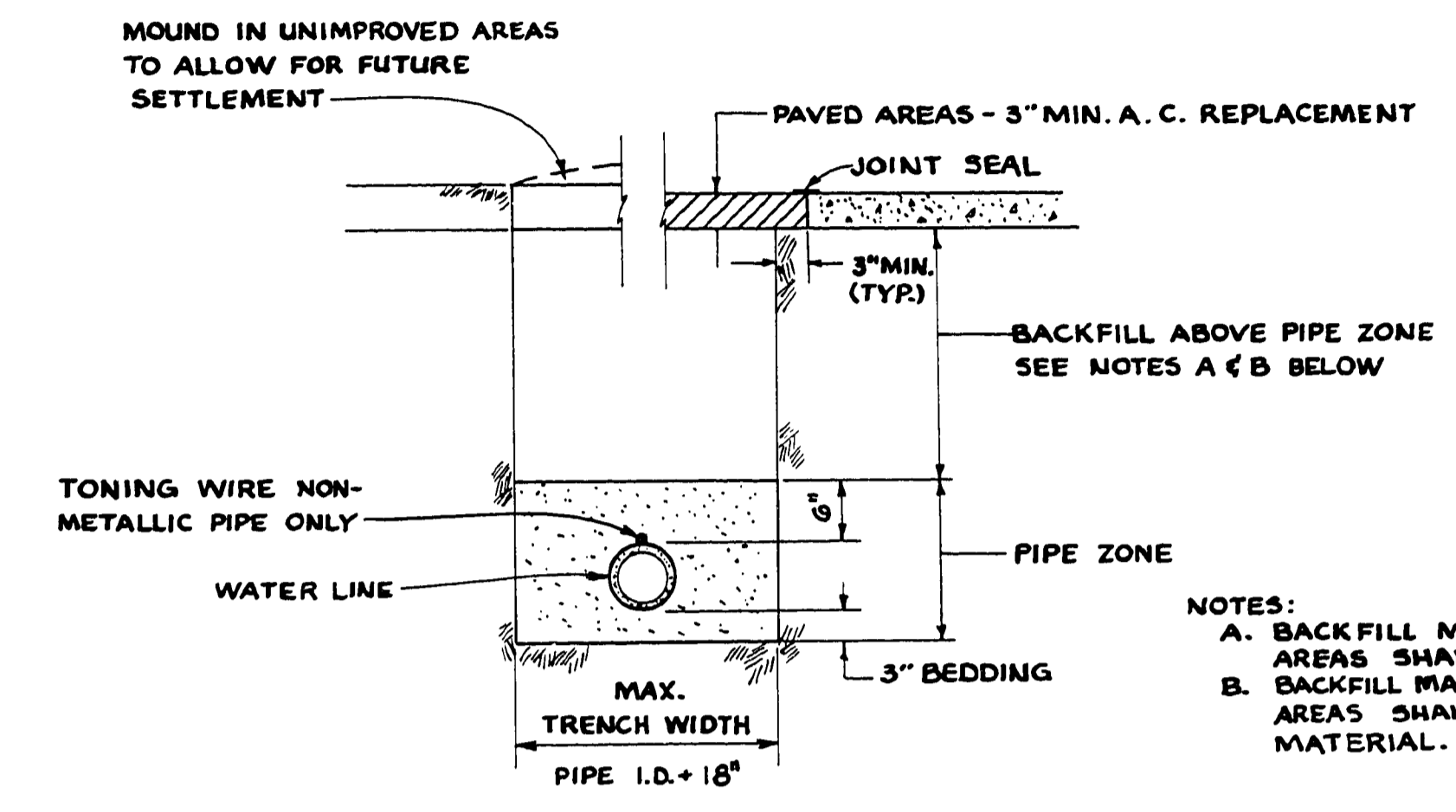


NOTE:
COMPACTED SAND SUPPORT
SHALL BEAR ON UNDISTURBED
FIRM GROUND. (MIN. 2 SQ. FT.)

GATE VALVE AND VALVE BOX DETAIL

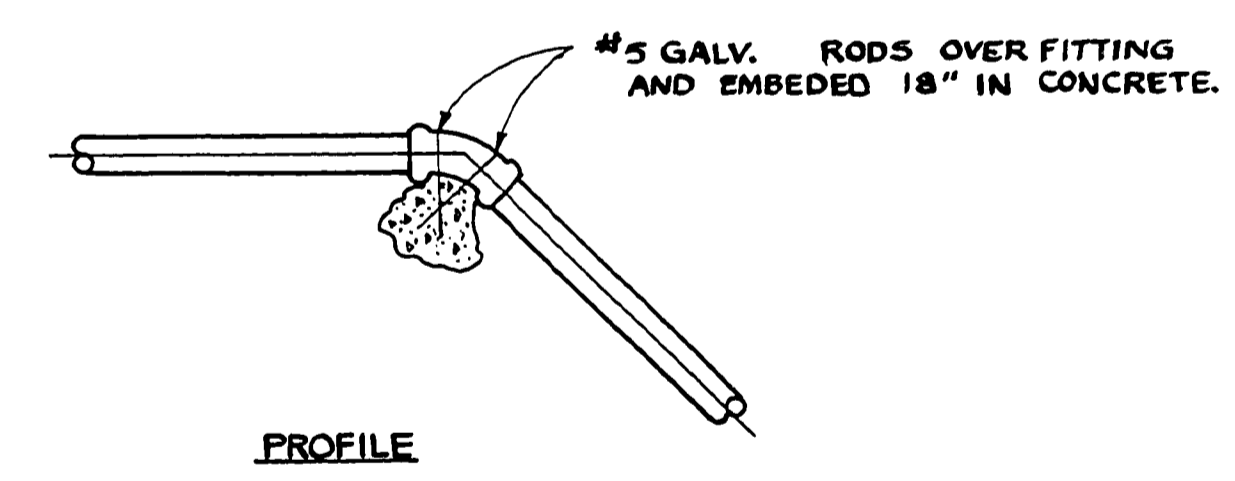
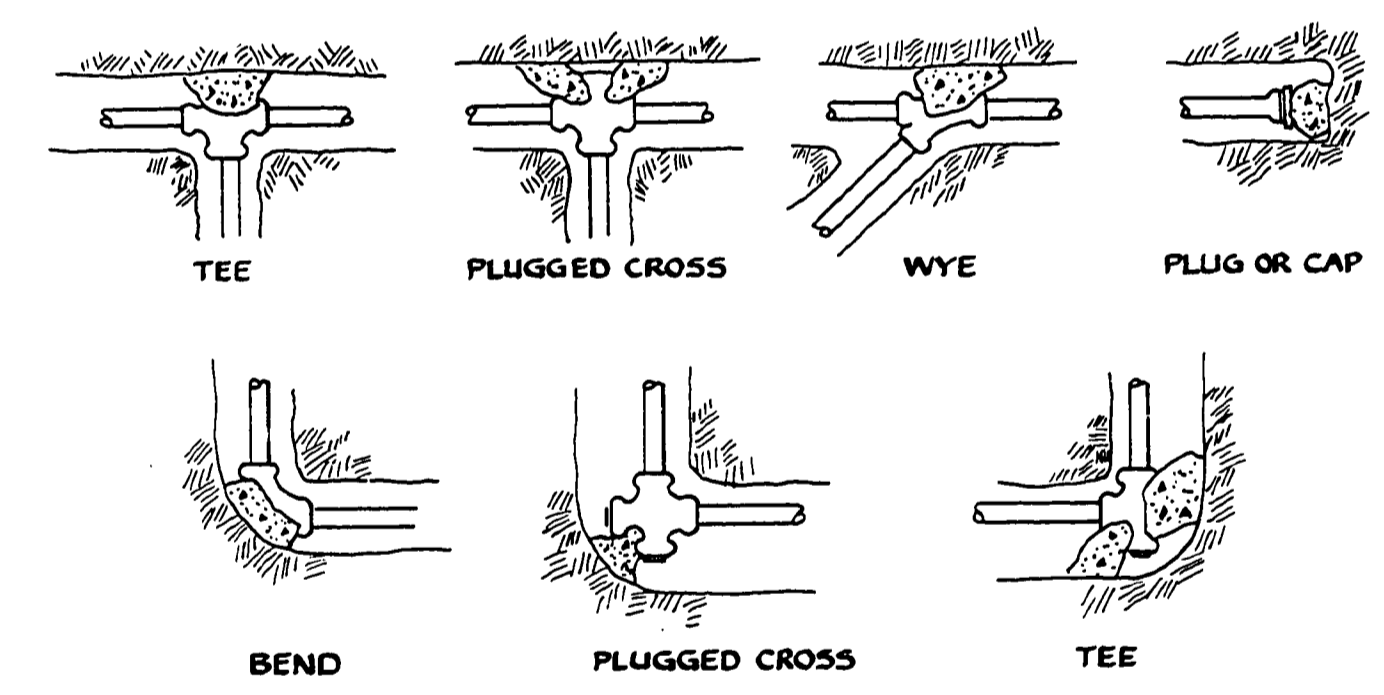


**SERVICE CONNECTION DETAIL
(BY OTHERS)**



NOTES:
A. BACKFILL MATERIAL IN UNIMPROVED
AREAS SHALL BE NATIVE MATERIAL.
B. BACKFILL MATERIAL IN IMPROVED
AREAS SHALL BE APPROVED GRANULAR
MATERIAL.

TYPICAL TRENCH SECTION



PROFILE

- KEEP CONCRETE CLEAR OF JOINT AND JOINT ACCESSORIES.
- THRUST BLOCKS FOR VERTICAL UP-BENDS SHALL BE THE SAME AS FOR HORIZONTAL BENDS.

FITTING SIZE	VOLUME OF THRUST BLOCK IN CU. YDS.	
	90° BEND	45° BEND
6	1.3	1.0
8	2.6	1.4

NOTE:
ALL BENDS LESS THAN 45° USE 1 C.Y. MIN.
ABOVE VOLUMES BASED ON TEST PRESSURE OF 150 psi. AND THE WEIGHT OF CONCRETE = 4050 lbs/cu. yd.. TO COMPUTE VOLUMES FOR DIFFERENT TEST PRESSURES, USE THE FOLLOWING EQUATION:
VOLUME = (TEST PRESSURE / 150) x (TABLE VALUE).

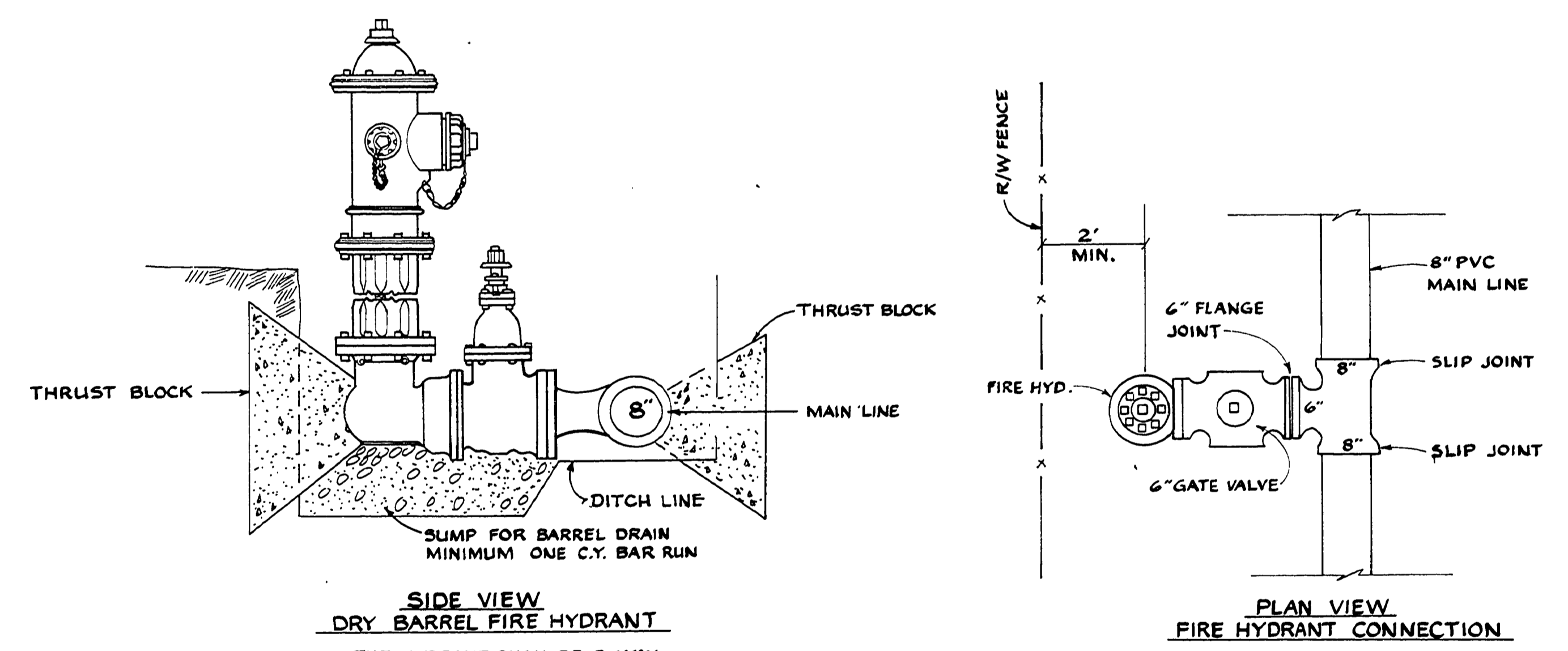
VERTICAL BEND ANCHOR BLOCK DETAIL

- NOTES:
- CONCRETE THRUST BLOCKING TO BE POURED AGAINST UNDISTURBED EARTH.
 - KEEP CONCRETE CLEAR OF JOINT AND ACCESSORIES.
 - CENTER OF GRAVITY OF THRUST BLOCK SHALL BE APPLIED AT 1/2 OF PIPE.

FITTING SIZE	BEARING AREA OF THRUST BLOCKS IN SQ. FT.						
	TEE, WYE PLUG OR CAP	90° BEND PLUGGED CROSS	TEE PLUGGED ON RUN		45° BEND	22-1/2° BEND	11-1/4° BEND
			A ₁	A ₂			
6	2.1	3.0	4.3	3.0	1.6	1.0	—
8	3.8	5.3	7.6	5.4	2.9	1.5	1.0

NOTE:
ABOVE BEARING AREAS BASED ON TEST PRESSURE OF 150 p.s.i. AND AN ALLOWABLE SOIL BEARING STRESS OF 2000 lbs/sq. ft.. TO COMPUTE BEARING AREAS FOR DIFFERENT TEST PRESSURES AND SOIL BEARING STRESSES, USE THE FOLLOWING EQUATION: BEARING AREA = (TEST PRESSURE / 150) x (2000 / SOIL BEARING STRESS) x (TABLE VALUE).

THRUST BLOCK DETAIL



**SIDE VIEW
DRY BARREL FIRE HYDRANT**

THE HYDRANT SHALL BE 3-WAY WITH TWO 2 1/2" HOSE NOZZLES AND ONE 4" PUMPER NOZZLE, AND SHALL HAVE SAFETY FLANGE AND STEM. INSTALLATION TO BE IN ACCORDANCE WITH THE CITY OF RIDDLE FIRE MARSHALL REGULATIONS.

FIRE HYDRANT DETAIL

NOTE:
ALL PIPE & RELATED APPURTENANCES TO BE FURNISHED BY OWNER AT A DESIGNATED SITE.

SURVEYED	DESIGNED <u>W. ROGERS</u>	DOUGLAS COUNTY PUBLIC WORKS DEPARTMENT	
DRAFTED <u>JW</u>	REVIEWED <u>W. POLAND</u>	SHOESTRING ROAD NO. 44	
BOOK		1977	SHT. 2
		GEORGE E. GRUBB, DIRECTOR	

Co Rd. 44 skt. 2 of 5

0281041T