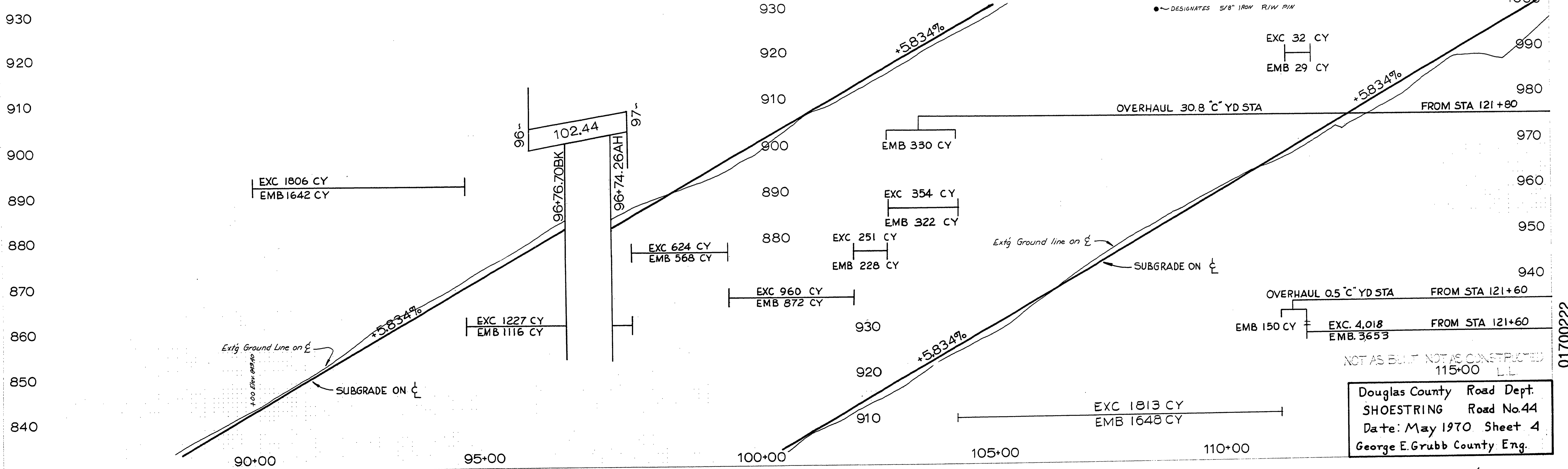
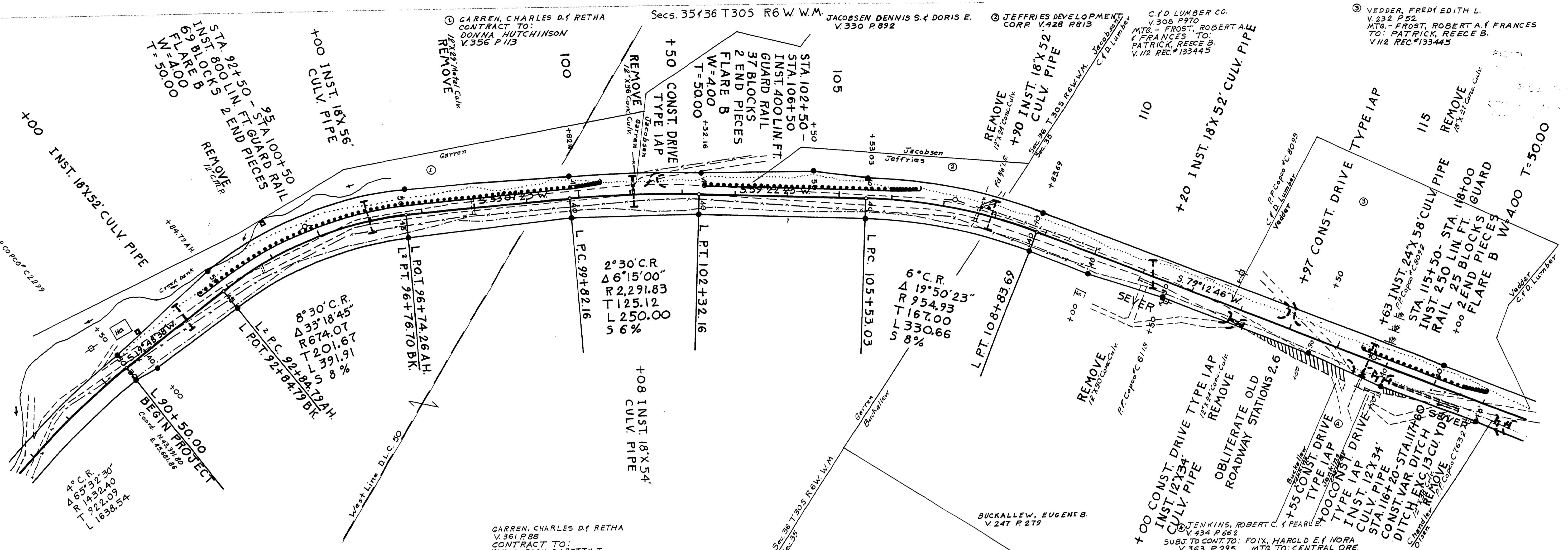


Note: P.D. 1/2" I.P. Sec. Cor. S. 35.347305 R6 W.W.M. 5.1.2 T315 R6 W.W.M. Coord. N. 41,467.31 E. 44,415.14



PLAN

PROFILE

NOT AS BUILT NOT AS CONSTRUCTED 115+00 LL  
Douglas County Road Dept.  
SHOESTRING Road No.44  
Date: May 1970 Sheet 4  
George E. Grubb County Eng.

01700222