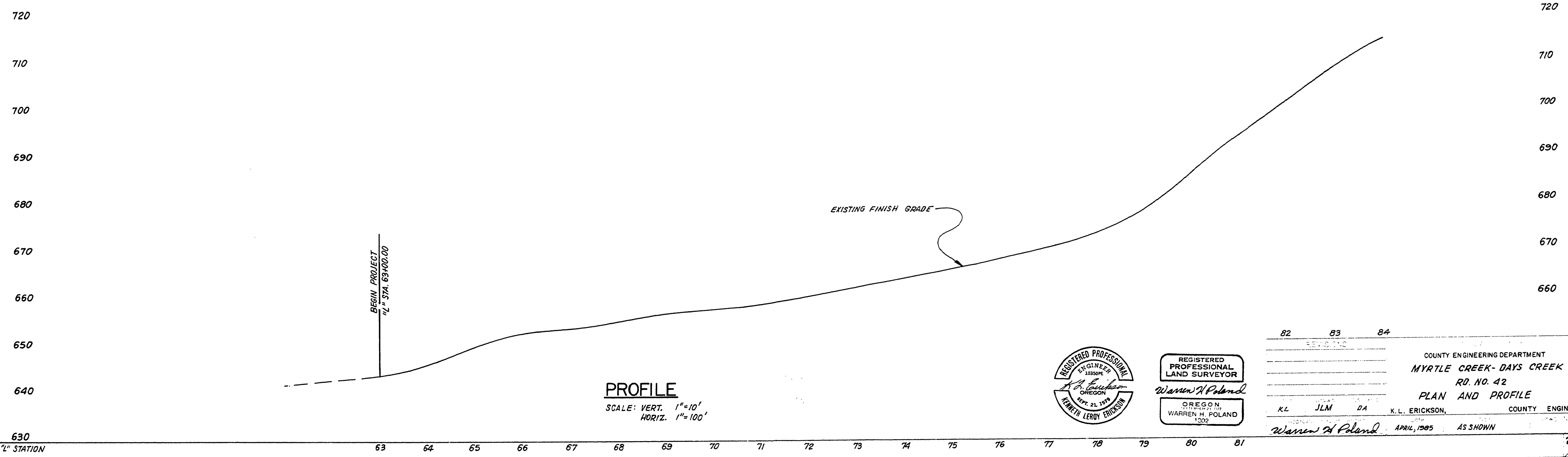
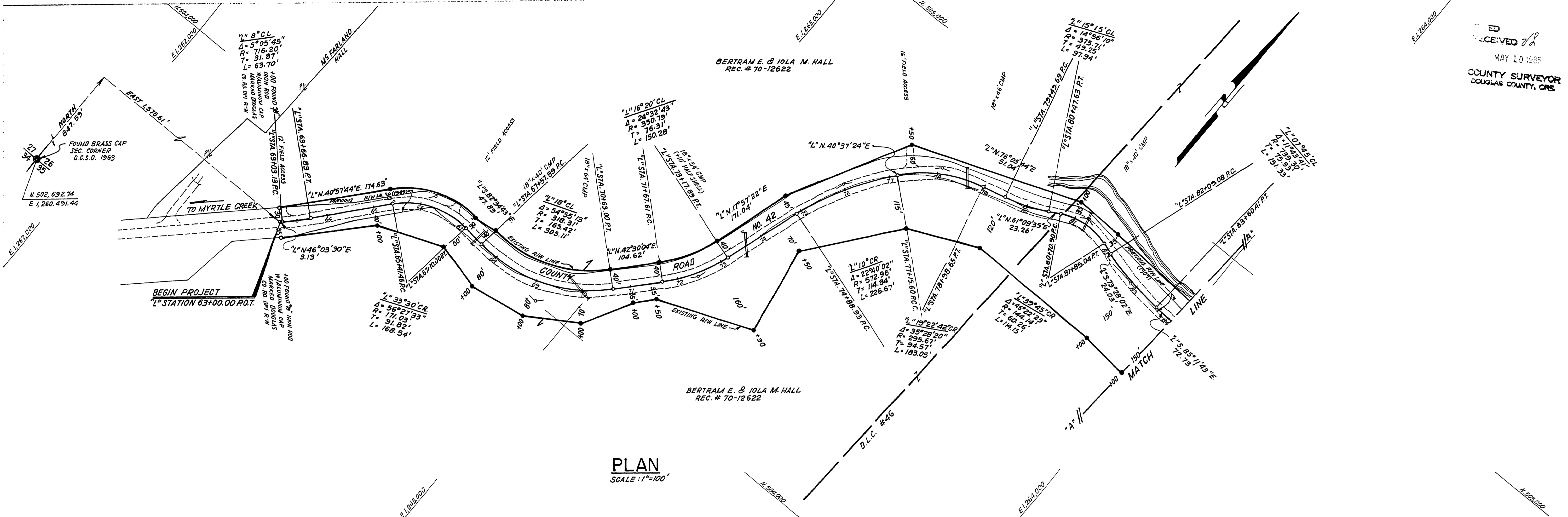


SEC. 26, T29S, R 5 W, W.M

RECEIVED
MAY 10 1985
COUNTY SURVEYOR
DOUGLAS COUNTY, ORE.



REGISTERED PROFESSIONAL LAND SURVEYOR
Warren H. Poland
OREGON
WARREN H. POLAND
1302

82	83	84
REVISION		
COUNTY ENGINEERING DEPARTMENT		
MYRTLE CREEK-DAYS CREEK		
RD. NO. 42		
PLAN AND PROFILE		
K.L.	JLM	DA
K.L. ERICKSON, COUNTY ENGINEER		
<i>Warren H. Poland</i>		APRIL, 1985 AS SHOWN

M.P. 1.73 - 2.15

RD #42 25-B

01750215