

NE 1/4 SEC 32 T29S R5W WM
 SE 1/4 SEC 32 T29S R5W WM
 SW 1/4 SEC 33 T29S R5W WM
 NW 1/4 SEC 33 T29S R5W WM

FILED
 Date: 4-29-2013 By: JC
 This survey consists of:
 Map: CO. RD. 41A
 Narrative:
 Corner Rpt: 7 sheets
 DOUGLAS COUNTY
 SURVEYOR

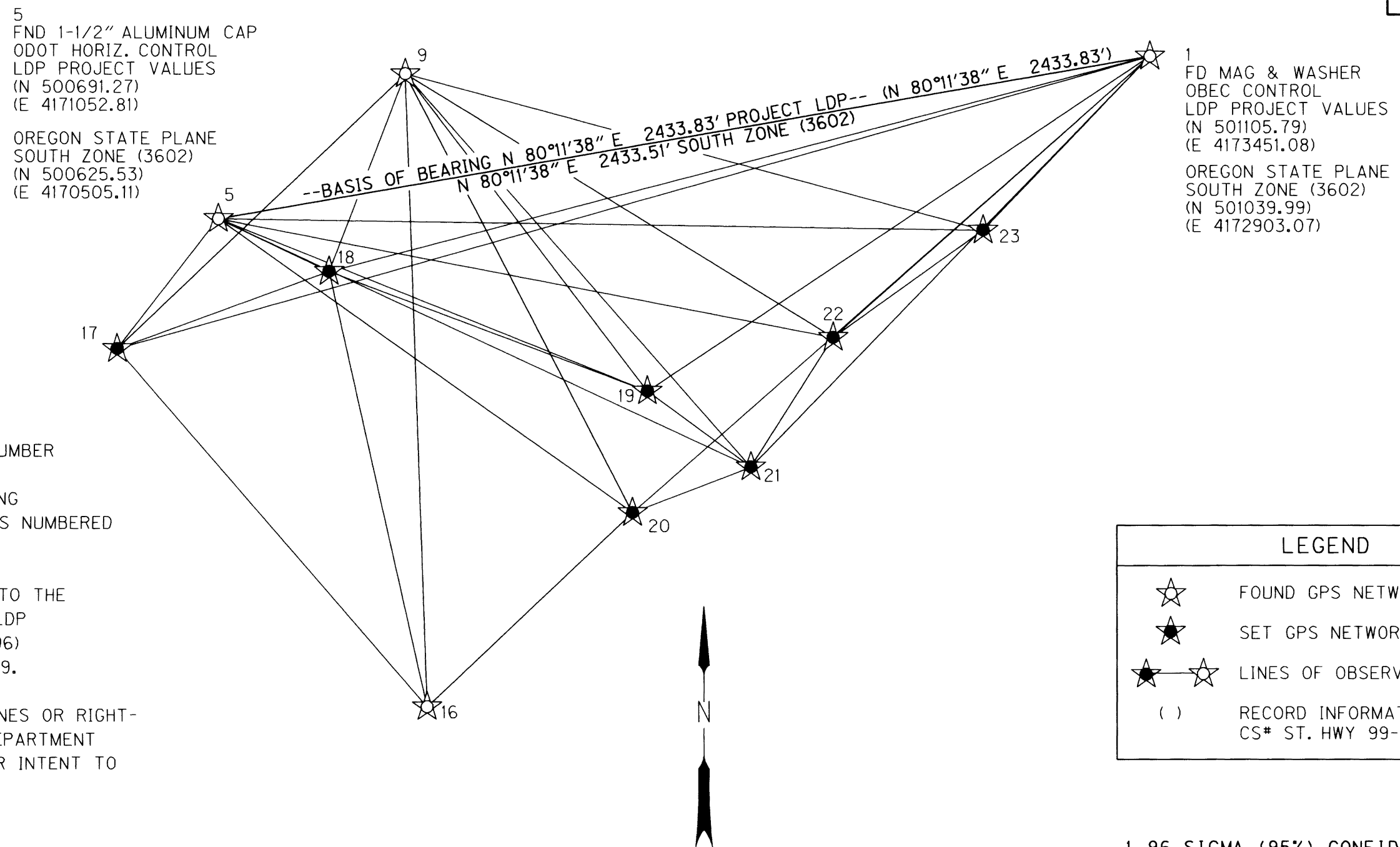
CONTROL NARRATIVE

PROJECT: WEAVER ROAD EXTENSION
 LOCATION: DOUGLAS COUNTY
 ODOT KEY NUMBER: 14085
 OBEC PROJECT NUMBER: 19-84.57
 SURVEY DATUM:
 HORIZONTAL - NAD83 (CORS96) EPOCH 2002 (INTERNATIONAL FEET)
 VERTICAL - NAVD 88 (INTERNATIONAL FEET)

THE INITIAL CONTROL NETWORK MONUMENTATION WAS ESTABLISHED IN RETRACEMENT SURVEY NUMBER ST. HWY 99-005. THIS CONTROL NETWORK WAS USED AS THE BASIS OF THIS SURVEY AS SHOWN HEREON. A SUPPLEMENTAL CONTROL NETWORK WAS ESTABLISHED, REPLACING POINTS LOST DURING CONSTRUCTION. A SECONDARY ADJUSTMENT WAS MADE TO THE NEWLY SET GPS CONTROL POINTS NUMBERED 17-23 BY CONSTRAINING TO THE VALUES OF THE ORIGINAL NETWORK, AS SHOWN HEREON.

THIS SURVEY UTILIZED A LOCAL DATUM PLANE (LDP) COORDINATE SYSTEM, WHICH IS RELATIVE TO THE OREGON STATE PLANE COORDINATE SYSTEM - SOUTH ZONE (3602). TO CONVERT THE PROJECT LDP COORDINATES TO THE OREGON STATE PLANE COORDINATE SYSTEM - SOUTH ZONE NAD83 (CORS96) EPOCH 2002, MULTIPLY THE LDP COORDINATE VALUES BY THE COMBINED FACTOR OF 0.99986869.

CONTROL POINTS FOR THIS SURVEY WERE NOT SET ON NOR DO THEY REPRESENT PROPERTY LINES OR RIGHT-OF-WAY LINES AND ARE INTENDED FOR USE SOLELY BY THE DOUGLAS COUNTY PUBLIC WORKS DEPARTMENT AND OBEC CONSULTING ENGINEERS IN SUPPORT OF THIS AND FUTURE PROJECTS. IT IS NOT OUR INTENT TO PERPETUATE THESE CONTROL POINTS AS MONUMENTS.



* = GPS NETWORK POINT DESTROYED DURING CONSTRUCTION

RECOVERED GPS NETWORK POINT COORDINATE TABLE FROM CS ST. HWY 99-005

PT. ID.	LDP NORTHING	LDP EASTING	DESCRIPTION
1	501105.79	4173451.08	FOUND MAGNAIL & WASHER STAMPED "OBEC CONTROL"
2*	498763.70	4171142.76	MAGNAIL & WASHER STAMPED "OBEC CONTROL"
3	501185.45	4171417.11	FOUND 5/8" IRON ROD W/ 1-1/2" ALUMINUM CAP "ODOT HORIZ. CONTROL 3", FLUSH
5	500691.27	4171052.81	FOUND 5/8" IRON ROD W/ 1-1/2" ALUMINUM CAP "ODOT HORIZ. CONTROL 5", FLUSH
6*	500705.80	4171310.30	5/8" IRON ROD W/ 1-1/2" ALUMINUM CAP "ODOT HORIZ. CONTROL 6", FLUSH
7*	500559.43	4171155.70	5/8" IRON ROD W/ 1-1/2" ALUMINUM CAP "ODOT HORIZ. CONTROL 7", FLUSH
8	500367.47	4170544.19	FOUND 5/8" IRON ROD W/ 1-1/2" ALUMINUM CAP "ODOT HORIZ. CONTROL 8", FLUSH
9	501062.03	4171534.48	FOUND MAGNAIL & WASHER STAMPED "OBEC CONTROL"
10	499972.03	4170085.43	FOUND MAGNAIL & WASHER STAMPED "OBEC CONTROL"
11*	500684.20	4173044.05	MAGNAIL & WASHER STAMPED "OBEC CONTROL"
12*	500208.05	4172447.57	5/8" REBAR W/RED PLASTIC CAP STAMPED "OBEC CONTROL"
13*	499860.63	4172445.90	MAGNAIL & WASHER STAMPED "OBEC CONTROL"
14*	500002.64	4172272.12	MAGNAIL & WASHER STAMPED "OBEC CONTROL"
15*	499856.69	4172009.77	5/8" REBAR W/RED PLASTIC CAP STAMPED "OBEC CONTROL"
16	499439.58	4171589.35	FOUND MAGNAIL & WASHER STAMPED "OBEC CONTROL"

SET GPS NETWORK POINT COORDINATE TABLE

PT. ID.	LDP NORTHING	LDP EASTING	DATE	DESCRIPTION
17	500358.30	4170792.09	01/09/13	SET 5/8" X 30" IRON ROD W/ORANGE PLASTIC CAP MARKED "OBEC CONTROL"
18	500556.01	4171337.66	01/09/13	SET 5/8" X 30" IRON ROD W/ORANGE PLASTIC CAP MARKED "OBEC CONTROL"
19	500248.31	4172157.53	01/09/13	SET 1" BRASS PLUG FLUSH IN CONCRETE, MARKED "OBEC"
20	499936.15	4172118.86	01/09/13	SET 1" BRASS PLUG FLUSH IN CONCRETE, MARKED "OBEC"
21	500053.44	4172423.47	01/09/13	SET 1" BRASS PLUG FLUSH IN CONCRETE, MARKED "OBEC"
22	500386.06	4172635.37	01/09/13	SET 1" BRASS PLUG FLUSH IN CONCRETE, MARKED "OBEC"
23	500664.57	4173021.18	01/09/13	SET 5/8" X 30" IRON ROD W/ORANGE PLASTIC CAP MARKED "OBEC CONTROL"

REGISTERED PROFESSIONAL LAND SURVEYOR
 4/9/2013
 OREGON
 JULY 12, 2005
 ARON JAMES CUTSFORTH
 65696
 RENEWAL: DEC. 31, 2013

OBEC CONSULTING ENGINEERS
 Corporate Office: 920 COUNTRY CLUB ROAD, SUITE 100B EUGENE, OREGON 97401-6089, 541-683-6090
 2235 MISSION STREET SE, SUITE 100 SALEM, OREGON 97302-1295, 503-589-4100
 831 O' HARE PARKWAY MEDFORD, OREGON 97504-4005, 541-774-5590
 5005 SW MEADOWS ROAD, SUITE 120 LAKE OSWEGO, OREGON 97035, 503-620-6103
 www.obec.com

OREGON DEPARTMENT OF TRANSPORTATION & DOUGLAS COUNTY PUBLIC WORKS

RIGHT OF WAY BOUNDARY MONUMENTATION SURVEY
 WEAVER ROAD EXTENSION
 OLD PACIFIC HIGHWAY
 DOUGLAS COUNTY

ODOT REGION 3 APRIL, 2013
 3500 NW STEWART PARKWAY NO SCALE
 ROSEBURG, OR. 97470 KEY # 14085 SHEET 2 OF 7

DESIGNED: A. CUTSFORTH PROJ. NO. 019-084.57
 DRAWN: L. MILES CHK'D: B. ELITHORP

R41ACNTL