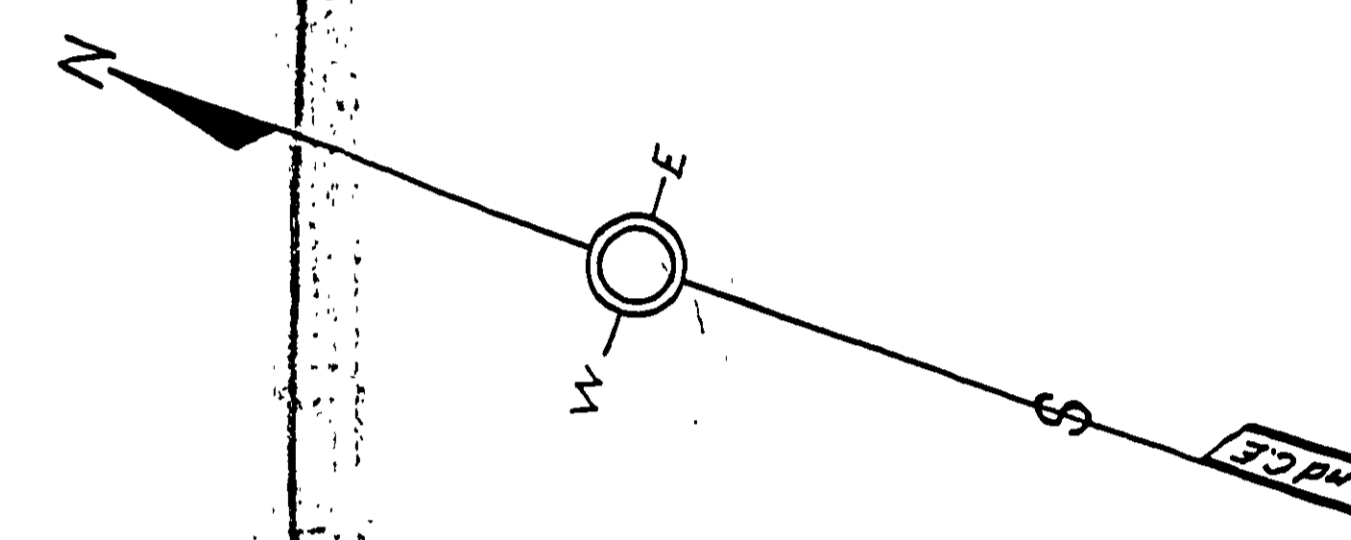
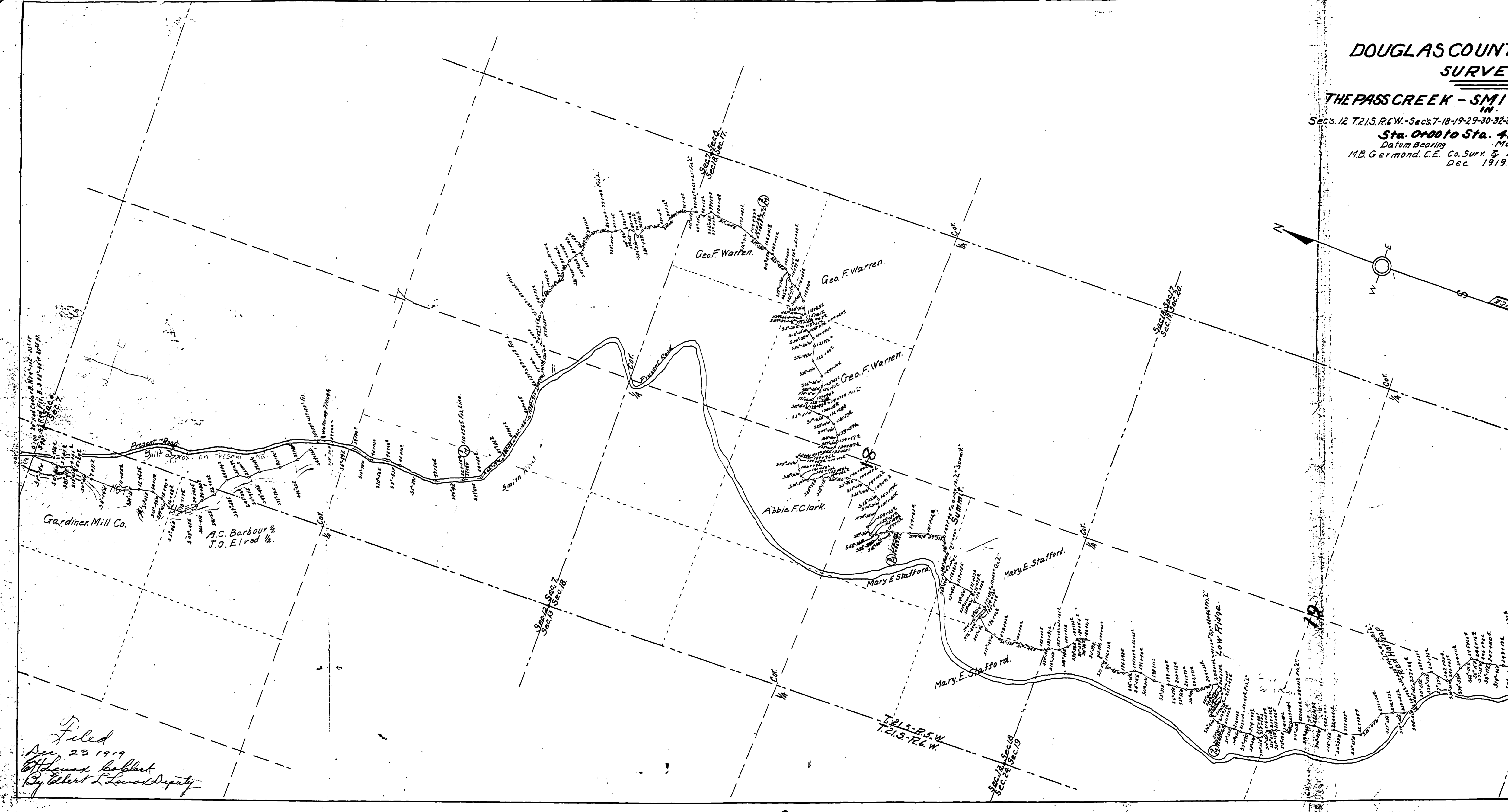


DOUGLAS COUNTY
SURVEY

THE PASS CREEK - SMITH
IN.
Secs. 12 T.21S. R.6W. - Secs. 7-10-19-29-30-32-33-7
Sta. 0100 to Sta. 482
Datum Bearing Maps
M.B. Germond, C.E. Co. Surv. & Plo.
Dec. 1919.



Filed
Dec. 23 1919
By Albert L. Leonard Deputy

30 X

