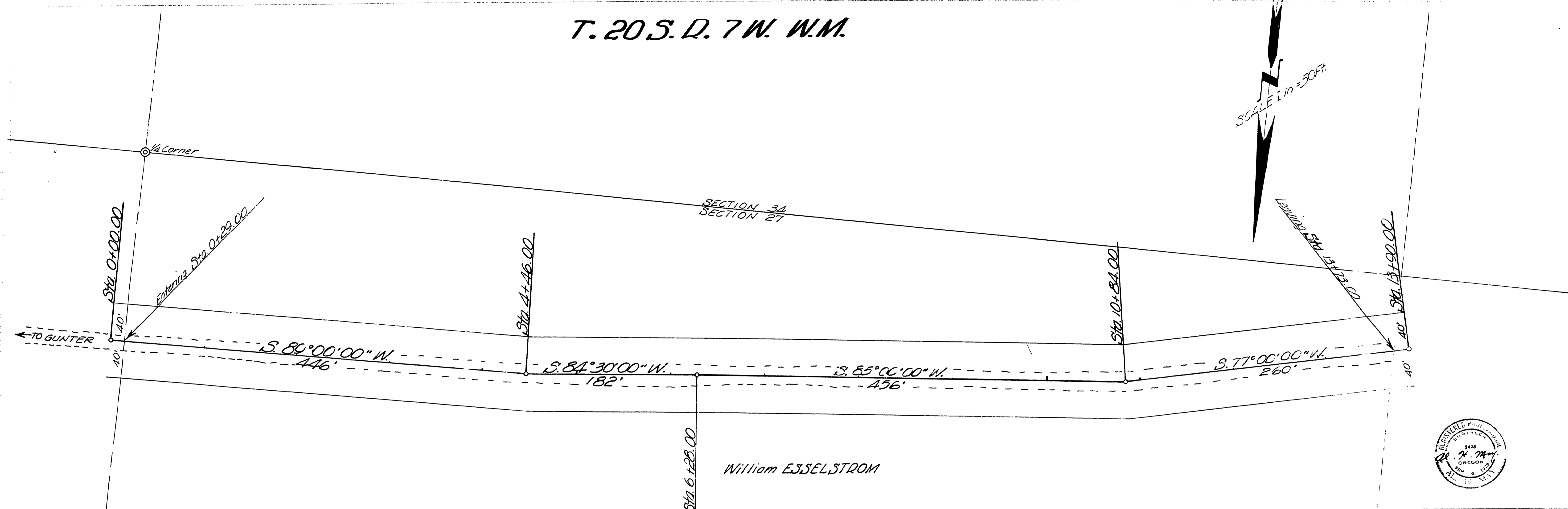


T. 20 S. D. 7 W. W.M.

SCALE 1 in = 50 FT.



Approved By Order of the  
County Court This 1<sup>st</sup> Day  
of August, 1962

V. T. Jackson  
JUDGE

C. T. Metcalf  
COMMISSIONER

R. E. Dwyer  
COMMISSIONER

FILED L.L.  
RECEIVED  
AUG 2 1962  
COUNTY SURVEYOR  
DOUGLAS COUNTY, ORE.

Douglas County Road Dept.  
EXTENSION of UPPER  
SMITH RIVER - Co. Rd. #37  
Date 8-1-62 Sheet 1 of 1  
A. H. MAY County Engr.

21692195

8-1-62  
Co. Road No. 37  
Sht. 1 of 1