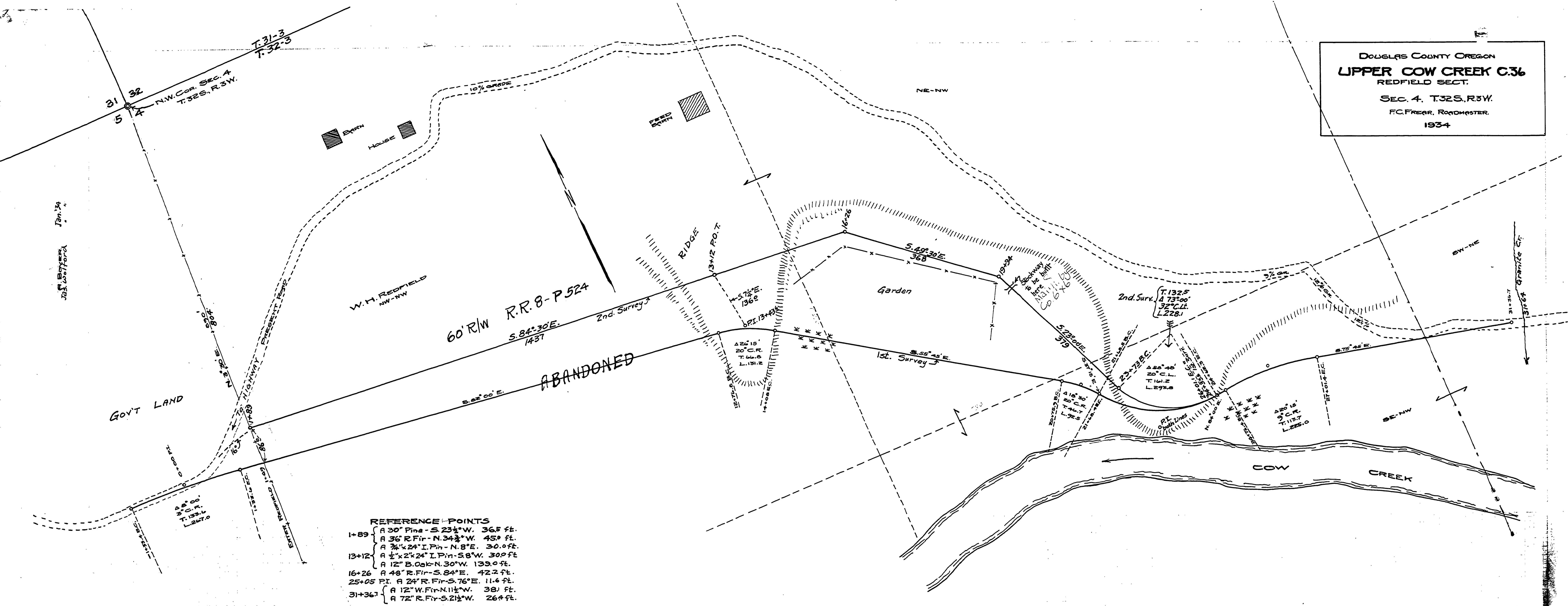


DOUGLAS COUNTY OREGON
UPPER COW CREEK C.36
 REDFIELD SECT.
 SEC. 4, T.32S, R.3W.
 F.C. FREER, ROADMASTER.
 1934



- REFERENCE POINTS**
- 1+89 { A 30" Pine - S.23½°W. 36.5 ft.
 - A 36" R. Fir - N.34½°W. 45.0 ft.
 - A ¾" x 24" I. Pin. - N.8°E. 30.0 ft.
 - 13+12 { A ½" x 24" I. Pin. - S.8°W. 30.0 ft.
 - A 12" B. Oak - N.30°W. 139.0 ft.
 - 16+26 A 48" R. Fir - S.84°E. 42.2 ft.
 - 25+05 P.I. A 24" R. Fir - S.76°E. 11.6 ft.
 - 31+36 { A 12" W. Fir - N.1½°W. 38.1 ft.
 - A 72" R. Fir - S.21½°W. 26.4 ft.

14501450

C-36