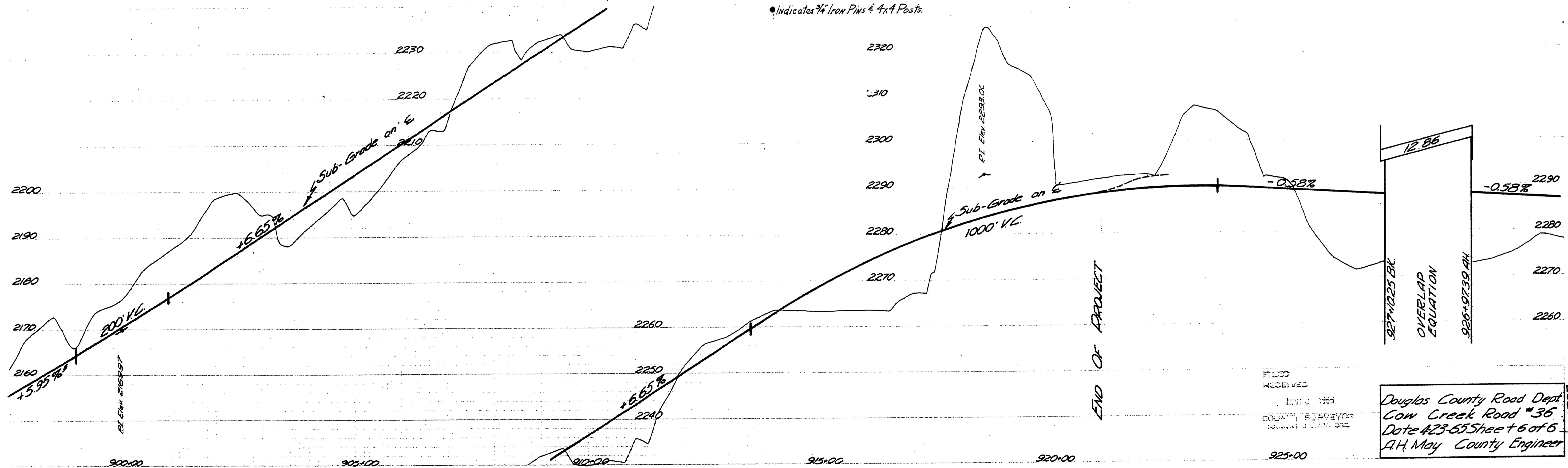
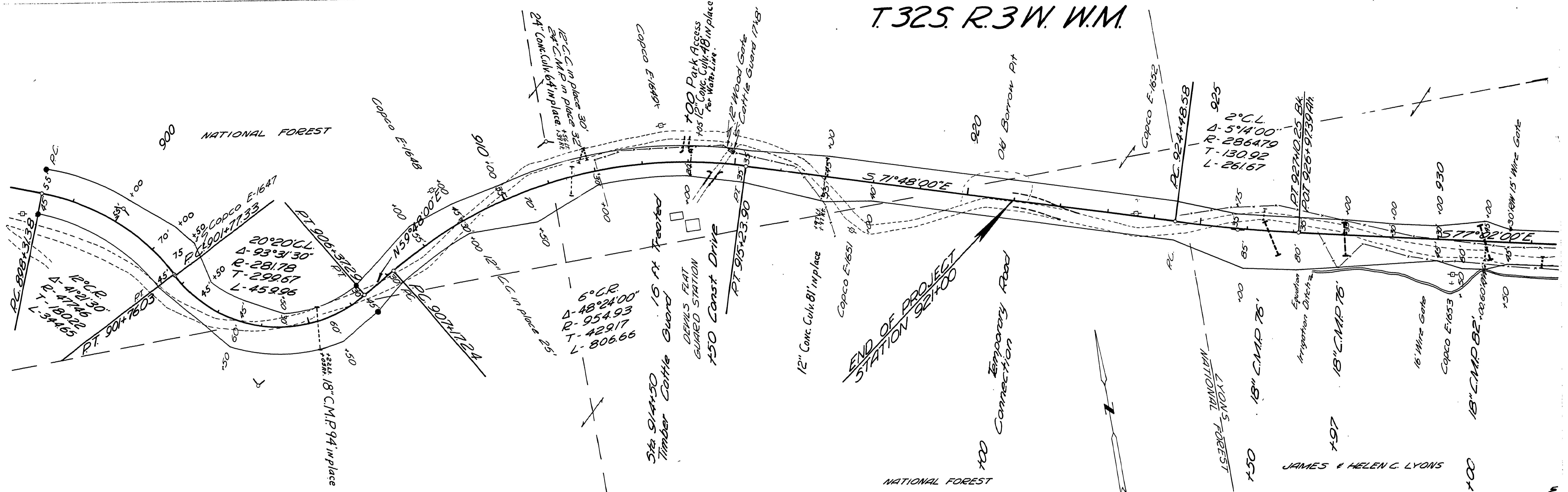


T.32S. R.3W. W.M.



● Indicates 3/4" Iron Pins & 4x4 Posts.

FILED
RECEIVED
MAY 1965
COUNTY ENGINEER

Douglas County Road Dept
Cow Creek Road #36
Date 4-23-65 Sheet 6 of 6
A.H. May County Engineer

16871727