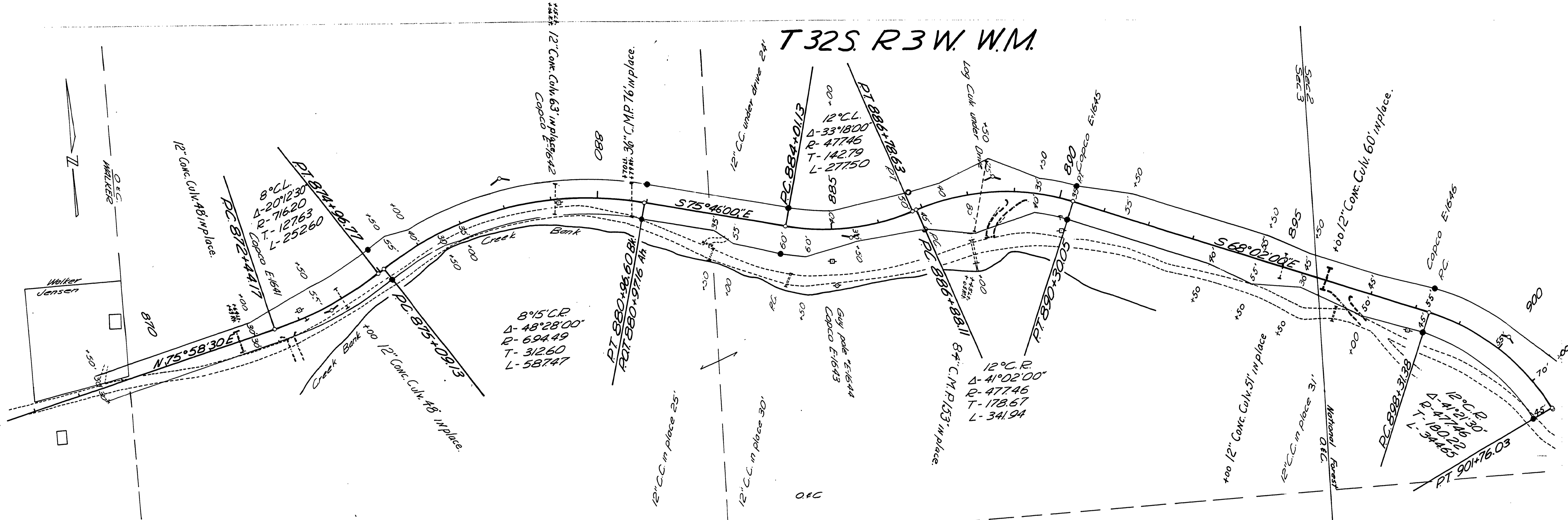
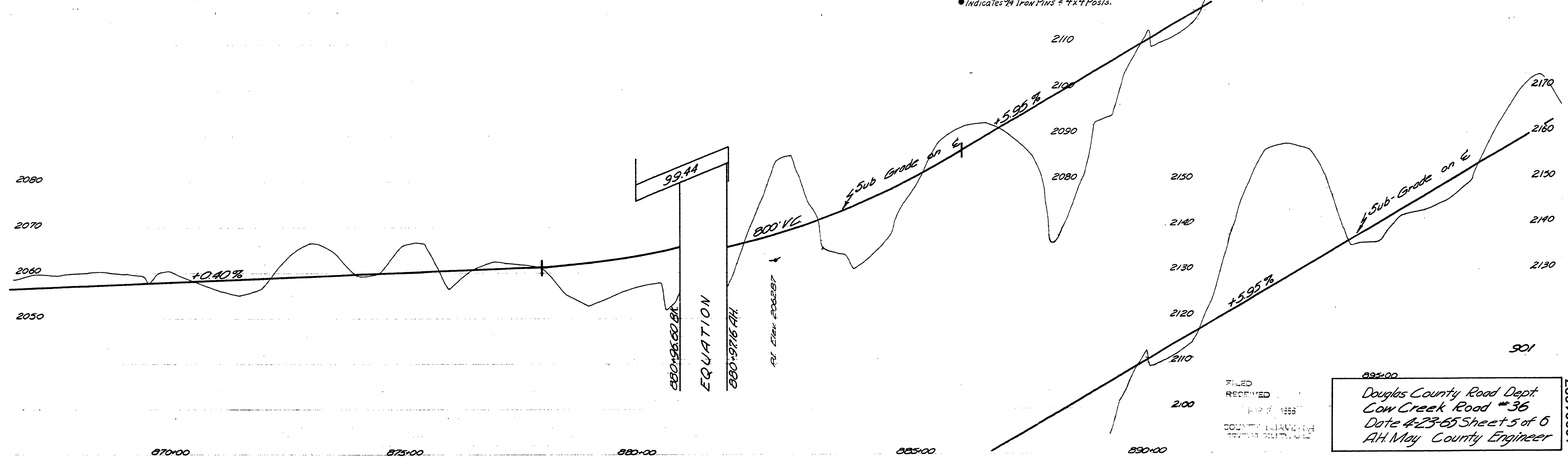


T 32 S. R 3 W. W.M.



● Indicates 3/4" Iron Pins & 4x4 Posts.



FILED
RECEIVED
APR 27 1965
COUNTY ENGINEER
DOUGLAS COUNTY, NEBRASKA

Douglas County Road Dept.
Cow Creek Road #36
Date 4-23-65 Sheet 5 of 6
A.H. May County Engineer

16301687

Co. Rd. #36 APR 1965
Sht. 5 of 6 (14)

M.P. 16.30 - 16.87