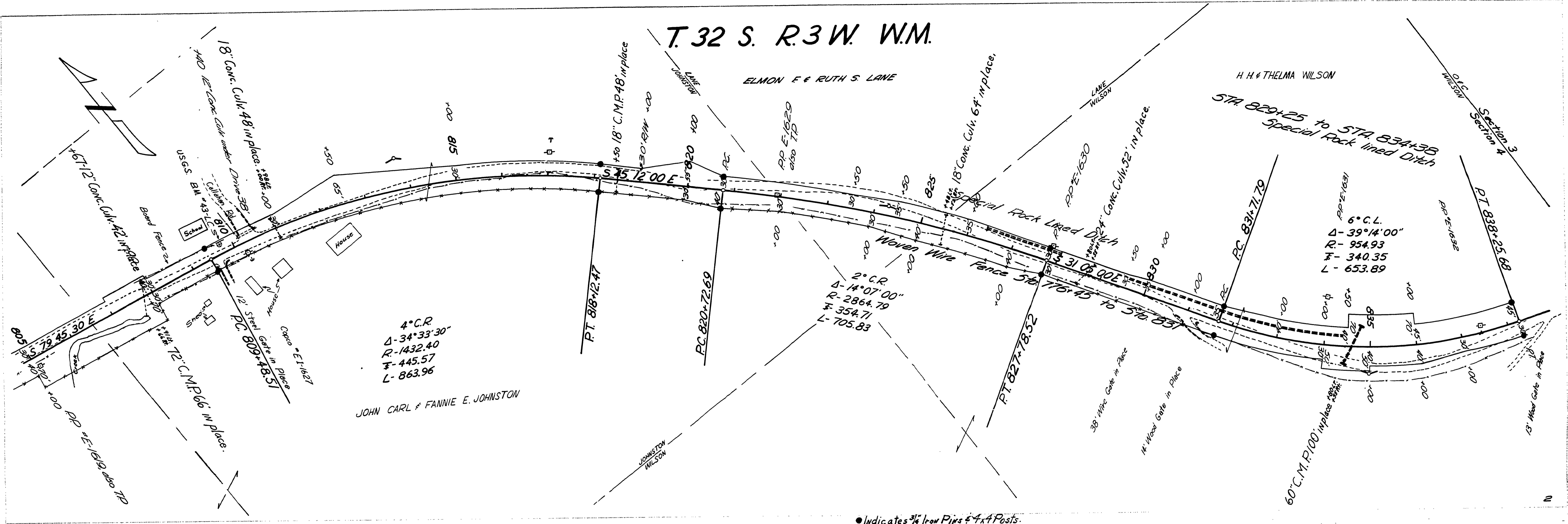
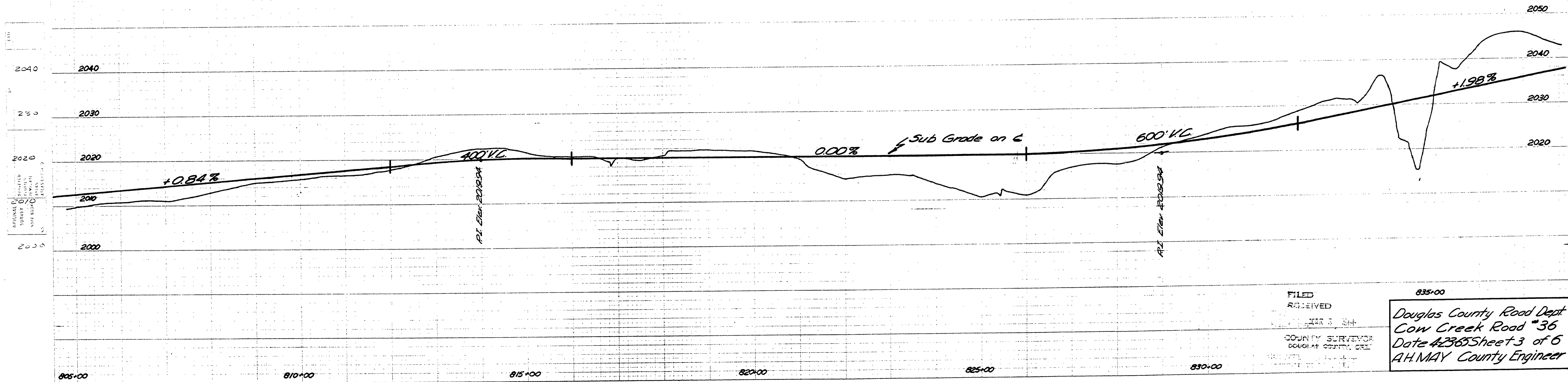


T. 32 S. R. 3 W. W.M.



● Indicates 3/4\"/>



FILED
RECEIVED
MAR 3 1964
COUNTY SURVEYOR
DOUGLAS COUNTY, ORE.

835+00
Douglas County Road Dept
Cow Creek Road #36
Date 4/23/65 Sheet 3 of 6
A.H. MAY County Engineer

15071564

M.P. 15.07 - 15.64.

Apr. 1965
G. Rd. # 36 Sit. 3 of 6 99