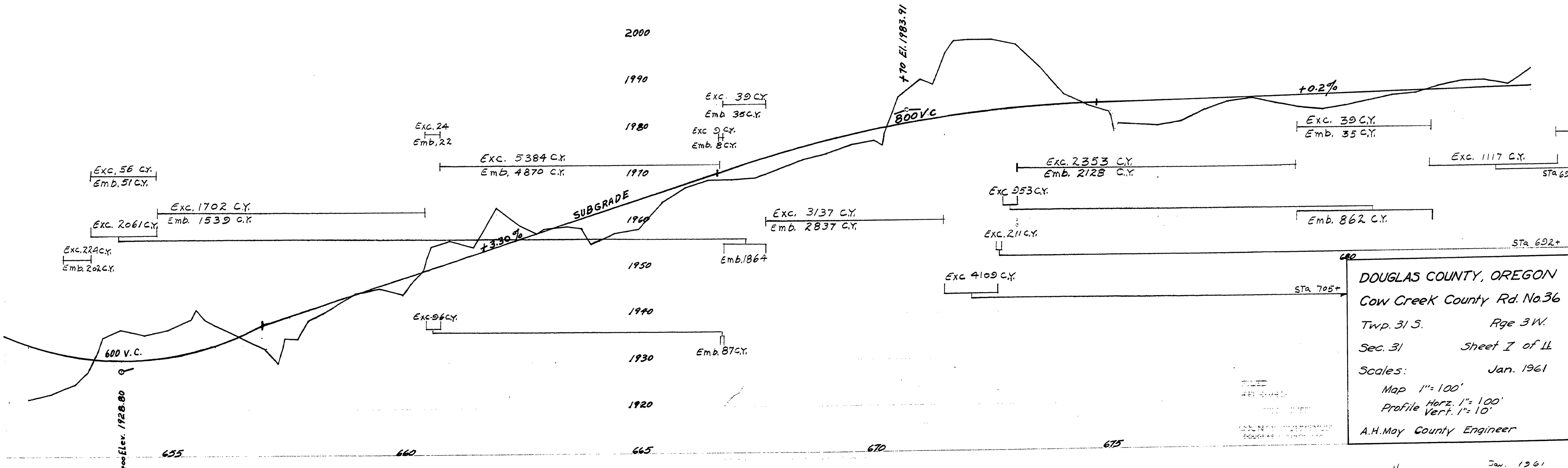
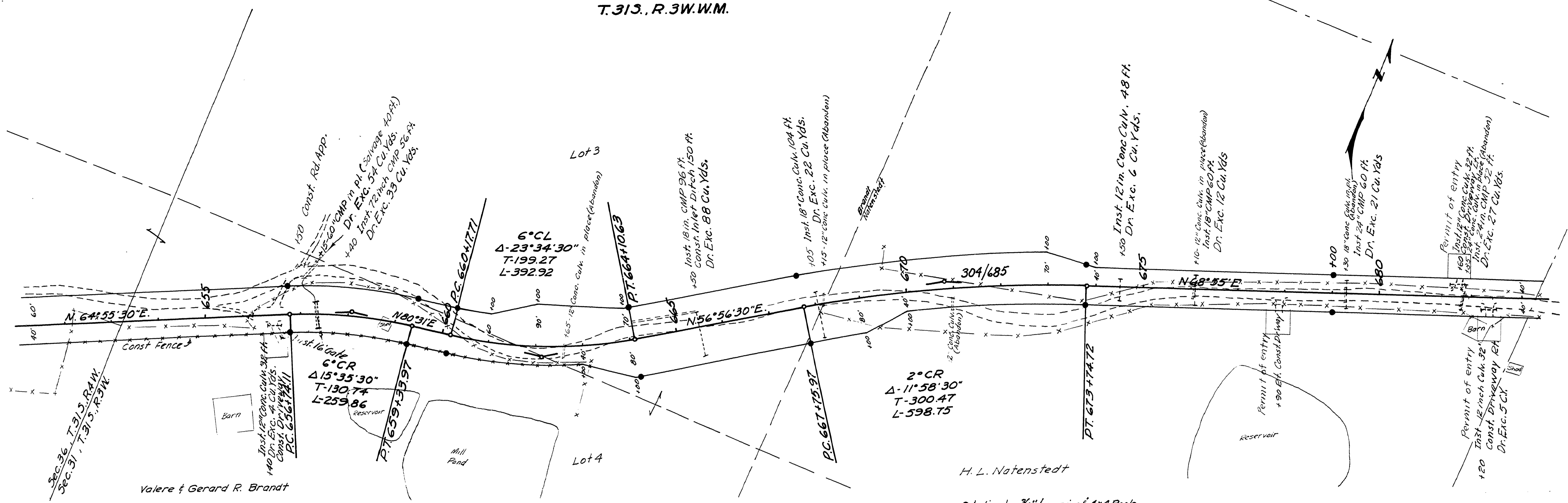


T. 31 S., R. 3 W. W.M.



DOUGLAS COUNTY, OREGON  
 Cow Creek County Rd. No. 36  
 Twp. 31 S. Rge 3 W.  
 Sec. 31 Sheet I of II  
 Scales: Jan. 1961  
 Map 1" = 100'  
 Profile Horz. 1" = 100'  
 Vert. 1" = 10'  
 A.H. May County Engineer

12171272

M.P. 12.17 - 12.72

Co. Rd. # 36

Jan. 1961  
 ch. 7 of 11

92