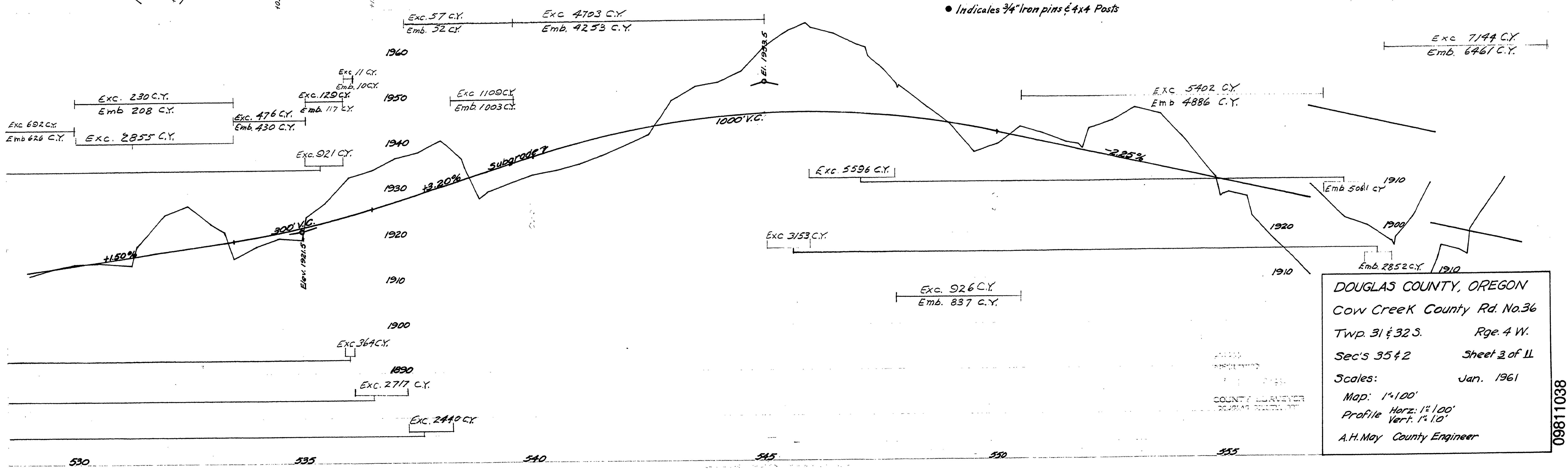
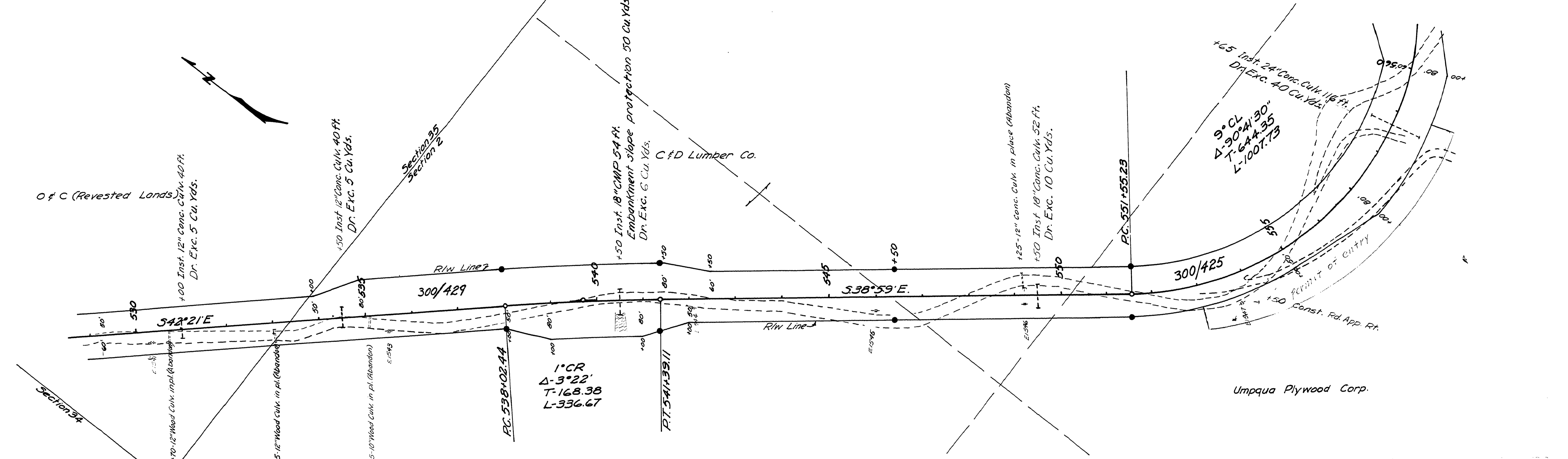


T.31 S., R.4 W. W.M.

T.32 S., R.4 W. W.M.



DOUGLAS COUNTY, OREGON
 Cow Creek County Rd. No. 36
 Twp. 31 & 32 S. Rge. 4 W.
 Sec's 35 & 36 Sheet 3 of 11
 Scales: Jan. 1961
 Map: 1"=100'
 Profile Horz: 1 1/2"=100'
 Profile Vert: 1"=10'
 A.H. May County Engineer

M.P. 9.81-10.38

C. Rd. # 36 Jan. 1961 Sit. 3 of 11

09811038

88