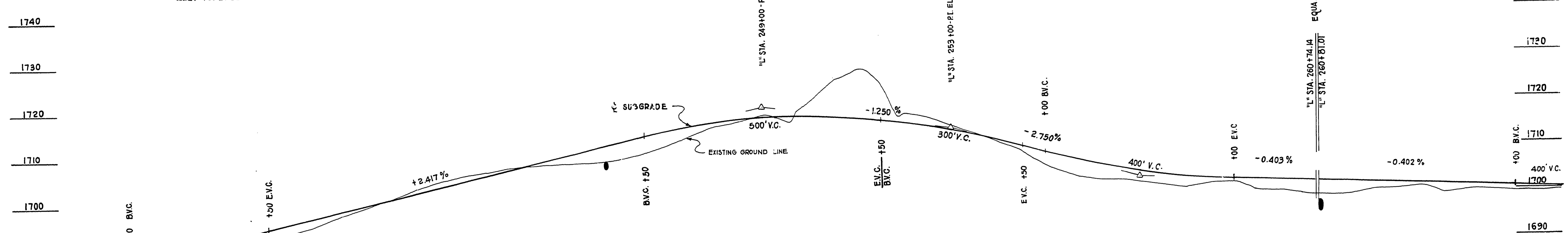
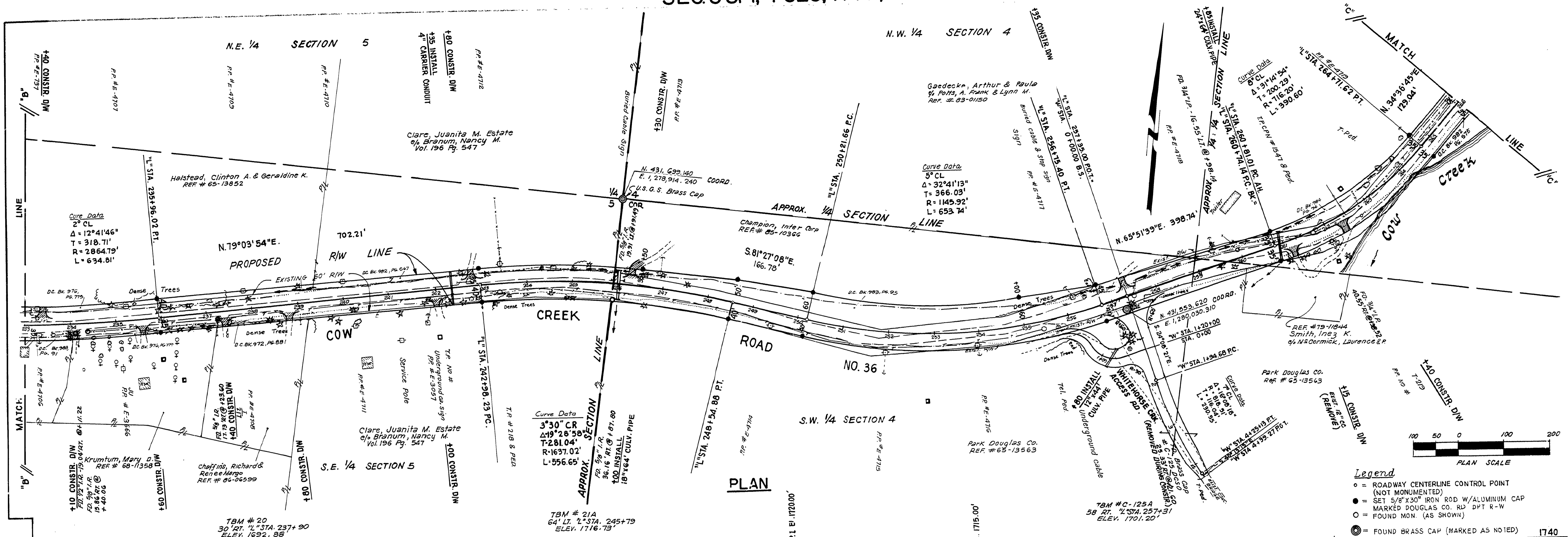


SEC 5 & 4, T32S, R4W, W.M.



ESTIMATED	602	406	205	44	31	8	56	294	544	60	347	71	2	14	236	4154	4228	3607	2980	792	31	1	59
FIG. (C.V.)	0	0	3	26	22	54	41	5	0	0	2	107	376	485	195	69	7	0	155	423	409	383	65
EMA (C.V.)	0	0	3	26	22	54	41	5	0	0	2	107	376	485	195	69	7	0	155	423	409	383	65

58	4	43	306	366	245	192
205	245	69	19	1	12	13
259	260	261	262	263	264	265

REGISTERED PROFESSIONAL LAND SURVEYOR
Warren H. Poland
OREGON
WARREN H. POLAND
1302

DOUGLAS COUNTY
COUNTY ENGINEERING DEPARTMENT
COW CREEK RD. NO. 36
PLAN AND PROFILE

K.L. ERICKSON, COUNTY ENGINEER

Warren H. Poland 5-1987 AS SHOWN SHEET 4 OF 7

M.P. 3.72-4.35

03720435

COW CRD #36
3/17/87 (115)