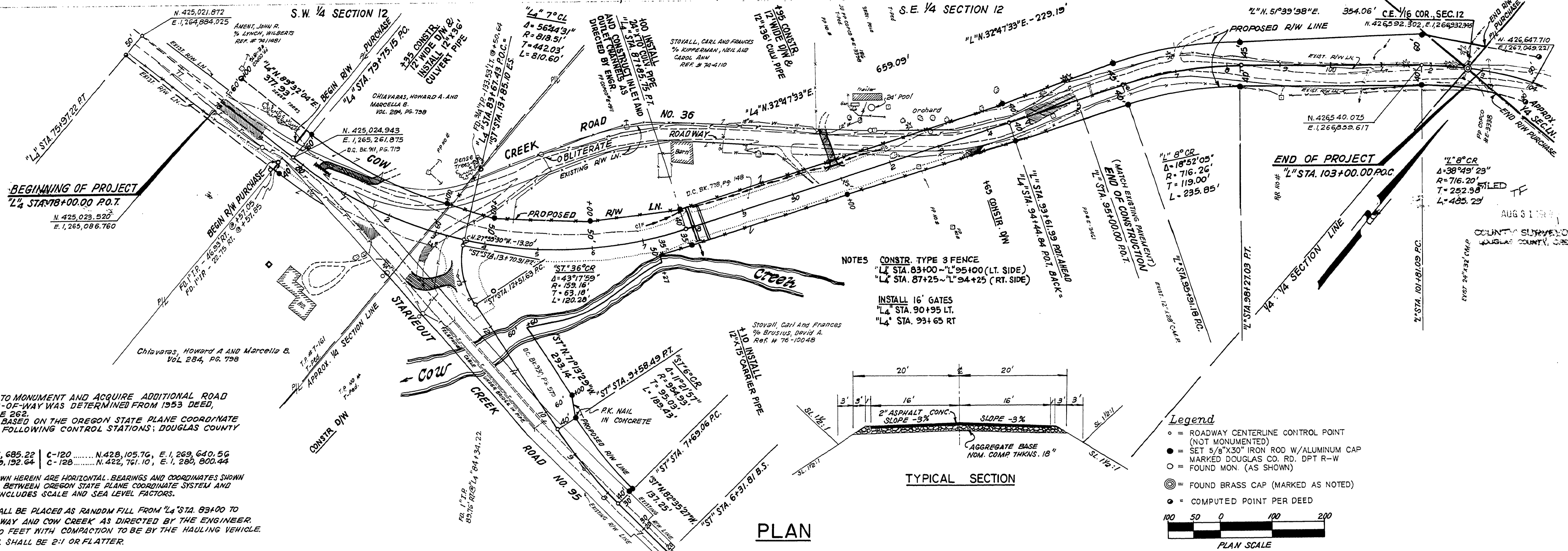


SEC. 12, T.32 S., R.5 W., W.M.



NARRATIVE:

PURPOSE OF THIS SURVEY WAS TO MONUMENT AND ACQUIRE ADDITIONAL ROAD RIGHT-OF-WAY EXISTING RIGHT-OF-WAY WAS DETERMINED FROM 1953 DEED, VOLUME 247, PAGE 261 AND PAGE 262.

BEARINGS SHOWN HEREIN ARE BASED ON THE OREGON STATE PLANE COORDINATE SYSTEM, SOUTH ZONE, USING THE FOLLOWING CONTROL STATIONS; DOUGLAS COUNTY SURVEYOR'S STATIONS:

DOUGLAS COUNTY SURVEYOR

PT S-10 N. 424,917.34, E. 1,261,685.22 C-120 N. 428,105.76, E. 1,269,640.56
 C-116 N. 422,639.42, E. 1,259,192.64 C-128 N. 422,761.10, E. 1,280,800.44

PLAN DISTANCES AND STATIONS SHOWN HEREIN ARE HORIZONTAL BEARINGS AND COORDINATES SHOWN HEREIN ARE GRID. GRID FACTOR USED BETWEEN OREGON STATE PLANE COORDINATE SYSTEM AND HORIZONTAL IS 0.9998317, WHICH INCLUDES SCALE AND SEA LEVEL FACTORS.

NOTE:

EXCESS EXCAVATED MATERIAL SHALL BE PLACED AS RANDOM FILL FROM "L" STA. 83+00 TO "L" STA. 87+00, BETWEEN THE ROADWAY AND COW CREEK AS DIRECTED BY THE ENGINEER. LIFT DEPTH SHALL NOT EXCEED TWO FEET WITH COMPACTION TO BE BY THE HAULING VEHICLE. FILL SLOPES FOR THE RANDOM FILL SHALL BE 2:1 OR FLATTER.

