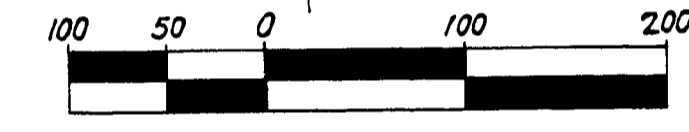
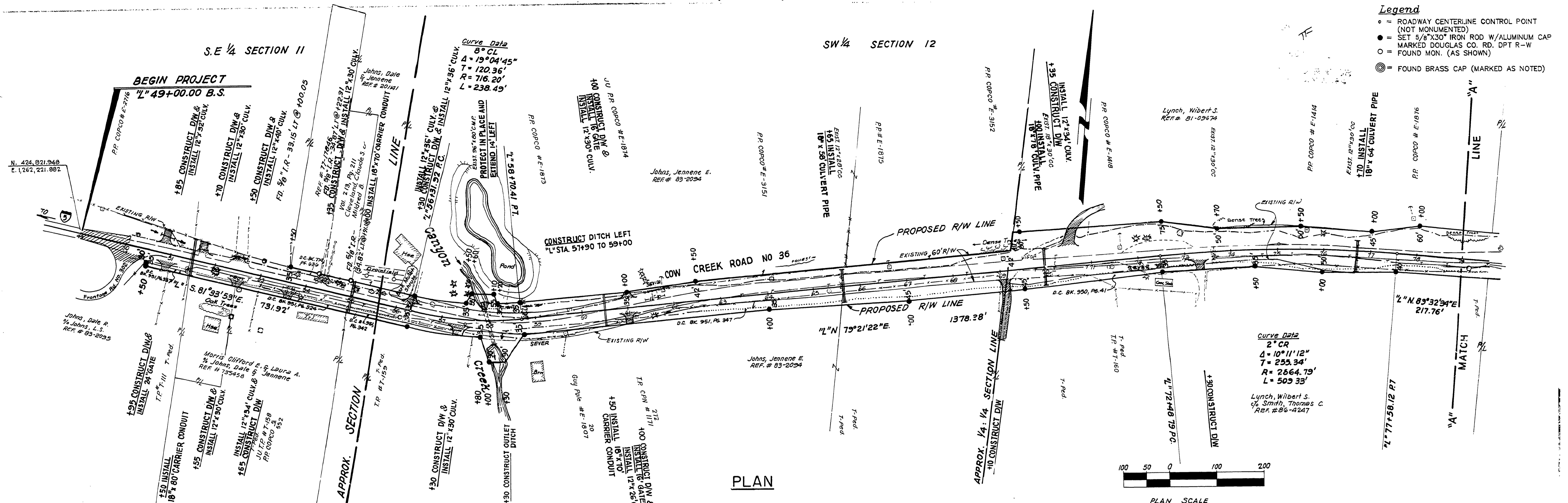


SEC. 11 & 12, T 32S, R 5W, W.M.

- Legend**
- = ROADWAY CENTERLINE CONTROL POINT (NOT MONUMENTED)
 - = SET 5/8" X 30" IRON ROD W/ ALUMINUM CAP MARKED DOUGLAS CO. RD. DPT R-W
 - = FOUND MON. (AS SHOWN)
 - ⊙ = FOUND BRASS CAP (MARKED AS NOTED)



TBM #3A
55' RT. "L" STA. 72+16
ELEV. 1623.16'

TBM #4A
55' RT. "L" STA. 72+16
ELEV. 1623.16'

TBM #2A
40' RT. "L" STA. 52+52
ELEV. 1630.85'

TBM #3A
62' LT. "L" STA. 61+52
ELEV. 1637.14'

TBM #4A
55' RT. "L" STA. 72+16
ELEV. 1623.16'

TBM #2A
40' RT. "L" STA. 52+52
ELEV. 1630.85'

TBM #3A
62' LT. "L" STA. 61+52
ELEV. 1637.14'

TBM #4A
55' RT. "L" STA. 72+16
ELEV. 1623.16'

TBM #2A
40' RT. "L" STA. 52+52
ELEV. 1630.85'

TBM #3A
62' LT. "L" STA. 61+52
ELEV. 1637.14'

TBM #4A
55' RT. "L" STA. 72+16
ELEV. 1623.16'

TBM #2A
40' RT. "L" STA. 52+52
ELEV. 1630.85'

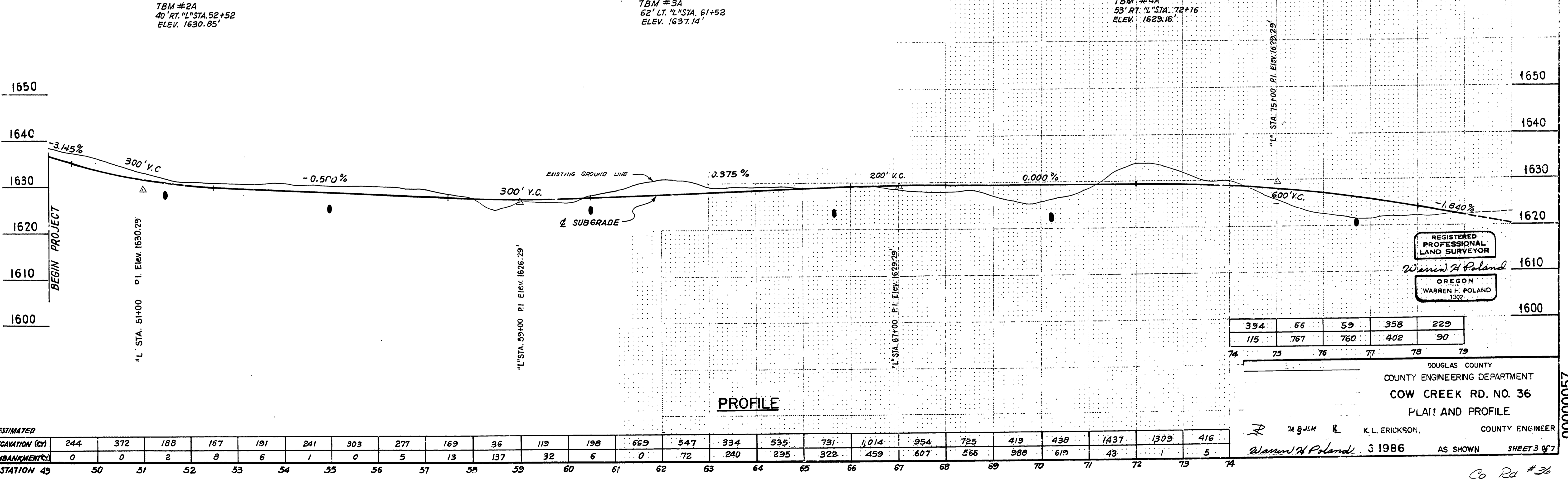
TBM #3A
62' LT. "L" STA. 61+52
ELEV. 1637.14'

TBM #4A
55' RT. "L" STA. 72+16
ELEV. 1623.16'

TBM #2A
40' RT. "L" STA. 52+52
ELEV. 1630.85'

TBM #3A
62' LT. "L" STA. 61+52
ELEV. 1637.14'

TBM #4A
55' RT. "L" STA. 72+16
ELEV. 1623.16'



REGISTERED PROFESSIONAL LAND SURVEYOR
Warren H. Poland
OREGON
WARREN H. POLAND
1302

DOUGLAS COUNTY
COUNTY ENGINEERING DEPARTMENT
COW CREEK RD. NO. 36
PLAN AND PROFILE

Warren H. Poland
K.L. ERICKSON, COUNTY ENGINEER
J 1986 AS SHOWN SHEET 3 OF 7

ESTIMATED	244	372	188	167	191	241	303	277	169	36	119	198	669	547	334	535	731	1,014	954	725	419	438	1,437	1,309	416	
EXCAVATION (CY)	0	0	2	8	6	1	0	5	13	137	32	6	0	72	240	295	322	459	607	566	988	619	43	1	5	
EMBANKMENT (CY)	49	50	51	52	53	54	55	56	57	58	59	60	61	62	63	64	65	66	67	68	69	70	71	72	73	74

M.P. 0.00 - 0.57

Cow Rd #36
Sheet 3 of 7

00000057