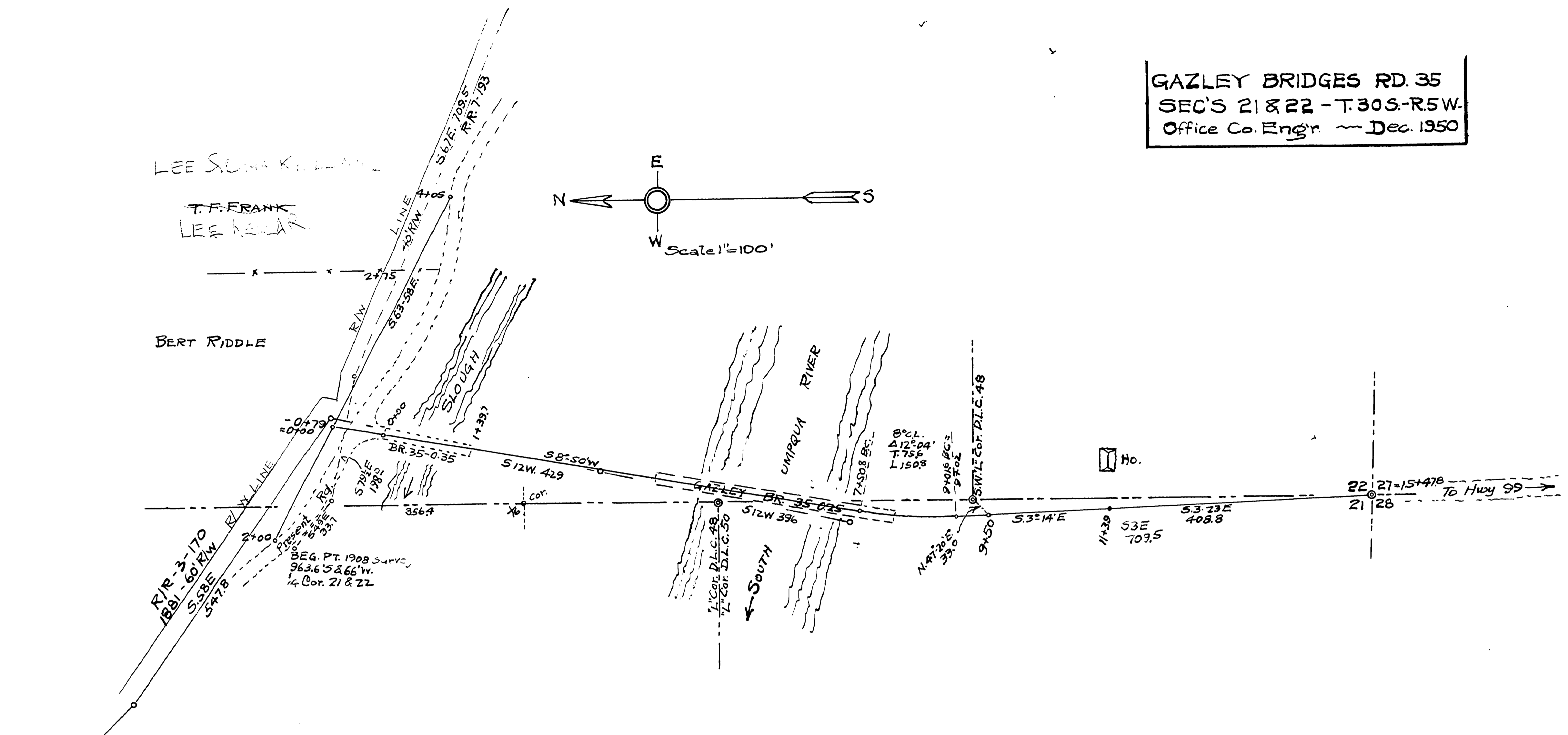
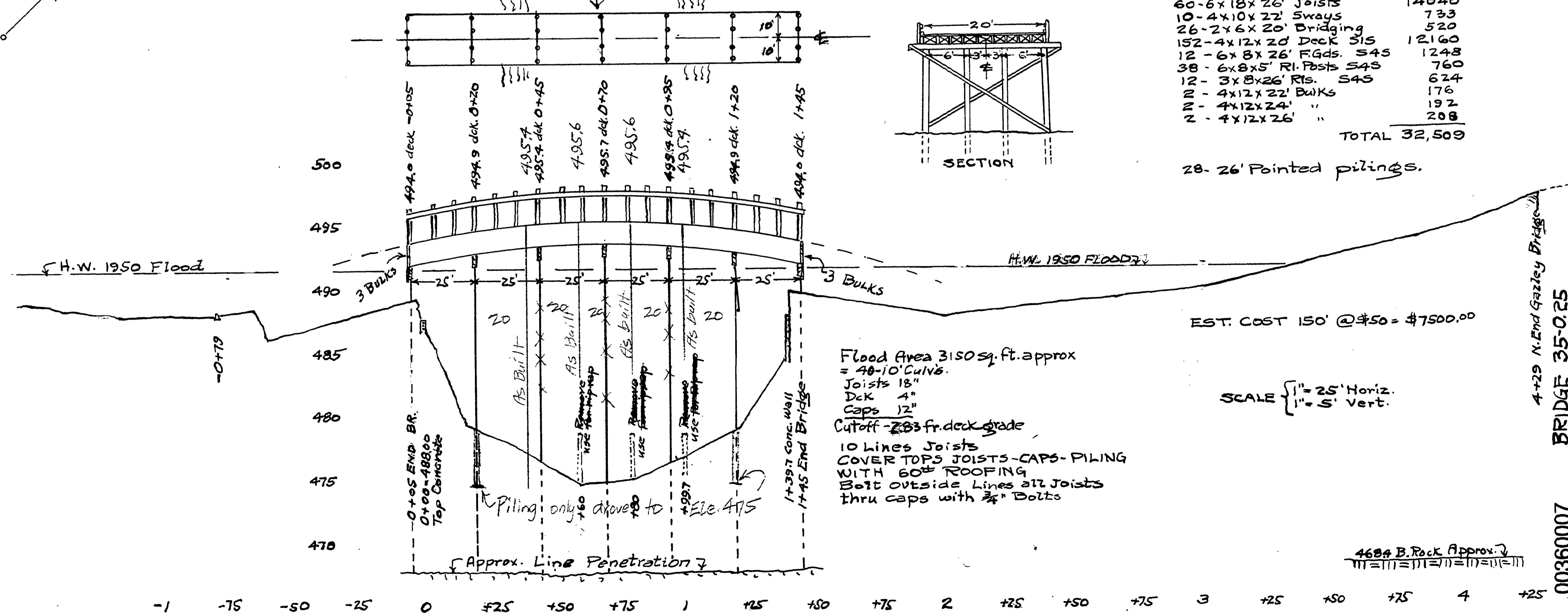


GAZLEY BRIDGES RD. 35
SEC'S 21 & 22 - T. 30S. - R. 5W.
 Office Co. Engr. - Dec. 1950



BRIDGE 35-0.35



BILL MATERIALS

7 - 12x12x22' Caps	1848
60 - 6x18x26' Joists	14040
10 - 4x10x22' Sways	733
26 - 2x6x20' Bridging	520
152 - 4x12x20' Deck S4S	12160
12 - 6x8x26' F.G.s S4S	1248
38 - 6x8x5' R.I. Posts S4S	760
12 - 3x8x26' R.I.s S4S	624
2 - 4x12x22' Bulks	176
2 - 4x12x24' "	192
2 - 4x12x26' "	208
TOTAL	32,508

28 - 26' Pointed pilings.

EST. COST 150' @ \$50 = \$7500.00

SCALE { 1" = 25' Horiz.
 1" = 5' Vert.

Flood Area 3150 sq. ft. approx
 = 48-10' Culvs.
 Joists 18"
 Dck 4"
 Caps 12"
 Cutoff - 283 fr. deck grade
 10 Lines Joists
 COVER TOP JOISTS - CAPS - PILING
 WITH 60# ROOFING
 Bolt Outside Lines all Joists
 thru caps with 3/4" Bolts

4684 B. Rock Approx.

-1 -75 -50 -25 0 +25 +50 +75 1 +125 +50 +75 2 +25 +50 +75 3 +25 +50 +75 4 +25

M.P. 0.36 - 0.07

Co. Rd. # 35

DEC 1950

4+29 N. End Gazley Bridges

BRIDGE 35-0.25

00360007

63