

DOUGLAS COUNTY HIGHWAY IMPROVEMENT

PROFILE AND ALIGNMENT

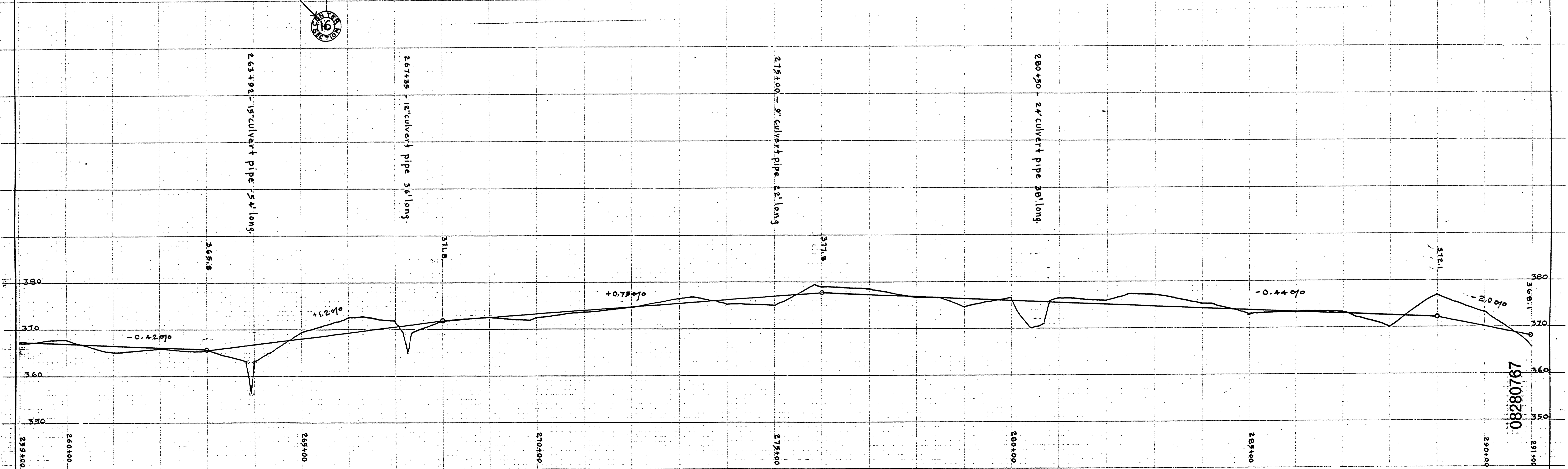
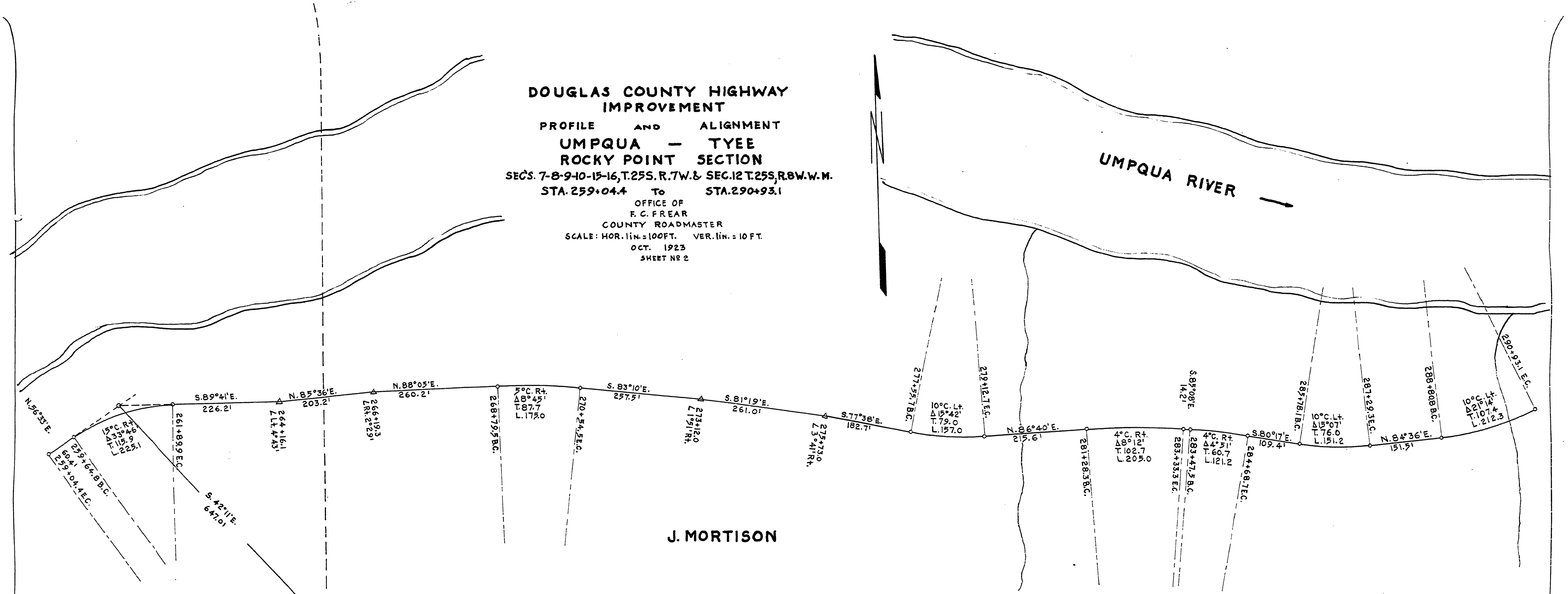
**UMPQUA - TYEE
ROCKY POINT SECTION**

SECS. 7-8-9-10-15-16, T.25S. R.7W. & SEC. 12 T.25S. R.8W. W.M.
STA. 259+04.4 To STA. 290+93.1

OFFICE OF
F. C. FREAR
COUNTY ROADMASTER
SCALE: HOR. 1 in. = 100 FT. VER. 1 in. = 10 FT.
OCT. 1923
SHEET NO 2

UMPQUA RIVER

J. MORTISON



MARKET ROAD No 27 33

M.P. 8.28 - 7.67

T25-7500. 16.

OCT. 1923 SHEET 2 OF 2

57