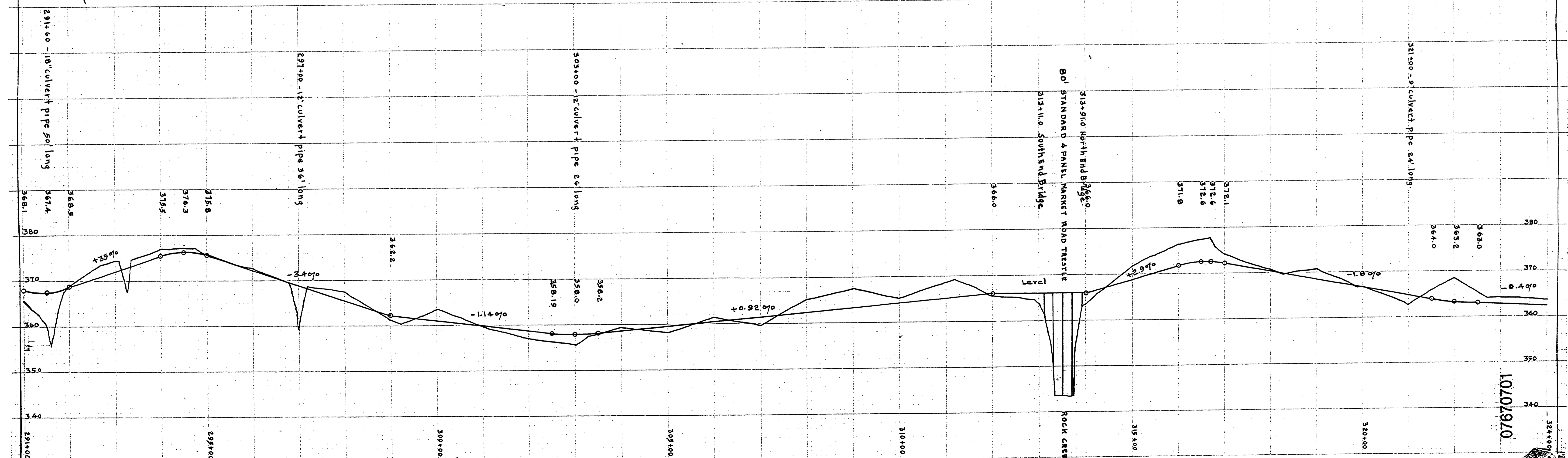
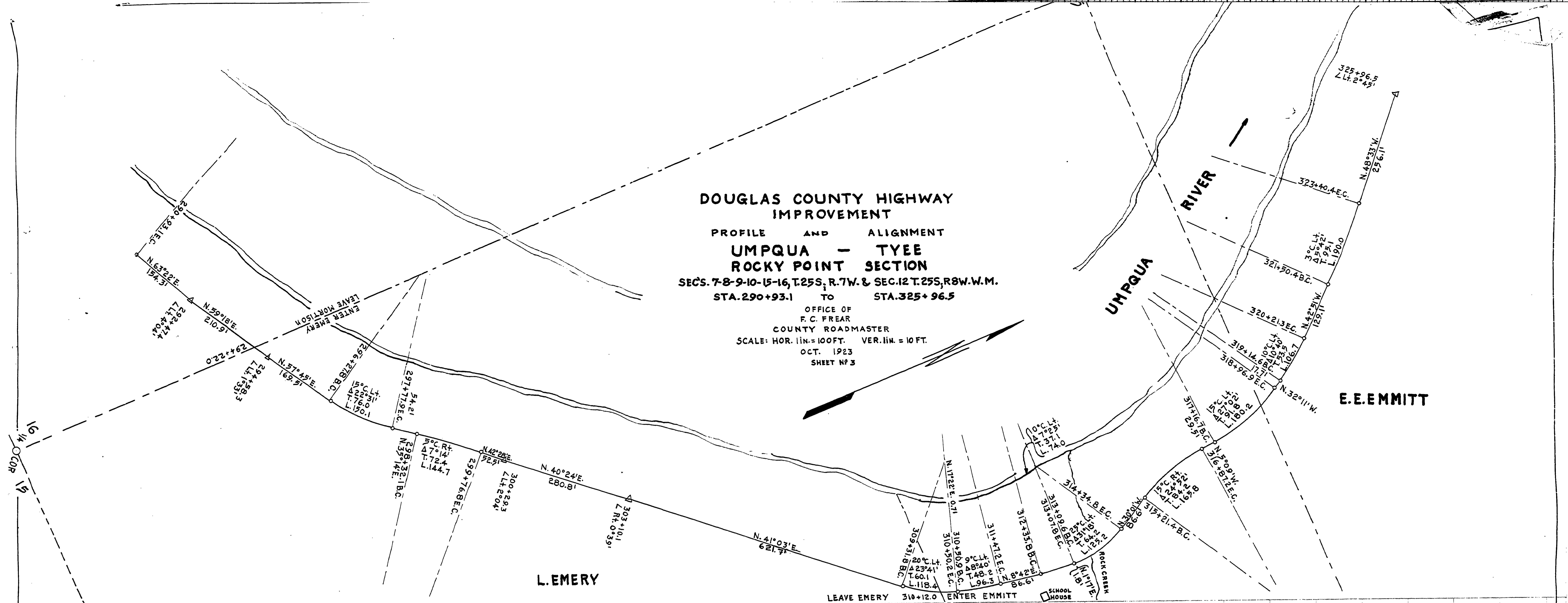


**DOUGLAS COUNTY HIGHWAY IMPROVEMENT**  
**PROFILE AND ALIGNMENT**  
**UMPQUA - TYEE**  
**ROCKY POINT SECTION**  
 SECS. 7-8-9-10-15-16, T.25S. R.7W. & SEC.12 T.25S, R8W.W.M.  
 STA. 290+93.1 TO STA. 325+96.5

OFFICE OF  
 F. C. FREAR  
 COUNTY ROADMASTER  
 SCALE: HOR. 1"=100 FT. VER. 1"=10 FT.  
 OCT. 1923  
 SHEET NO 3



MARKET ROAD No 27

07670701