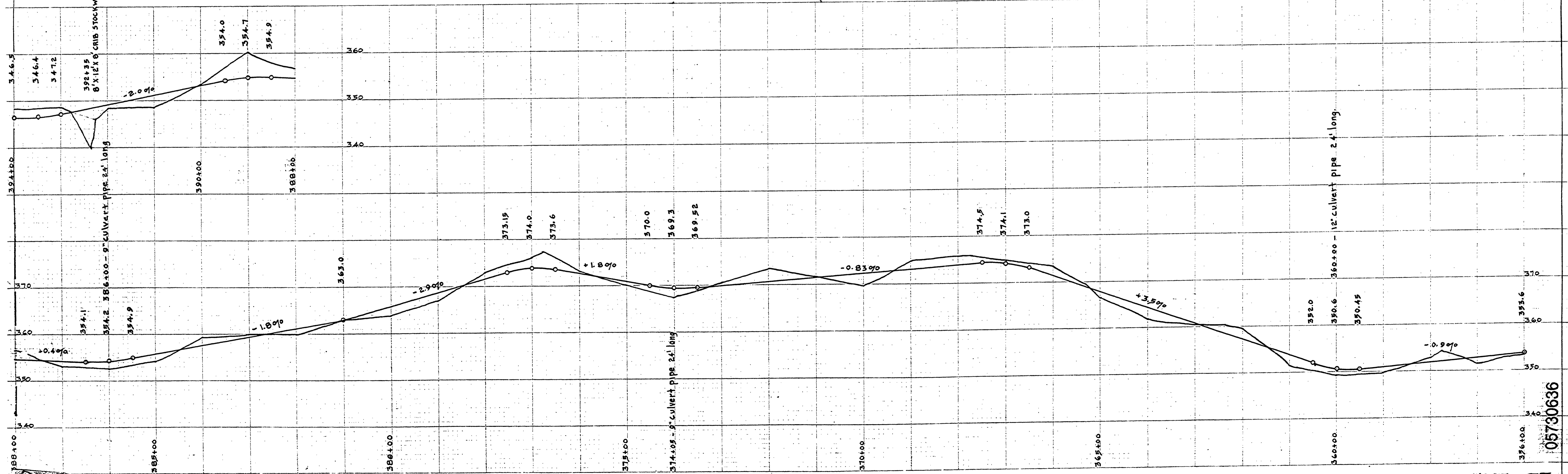
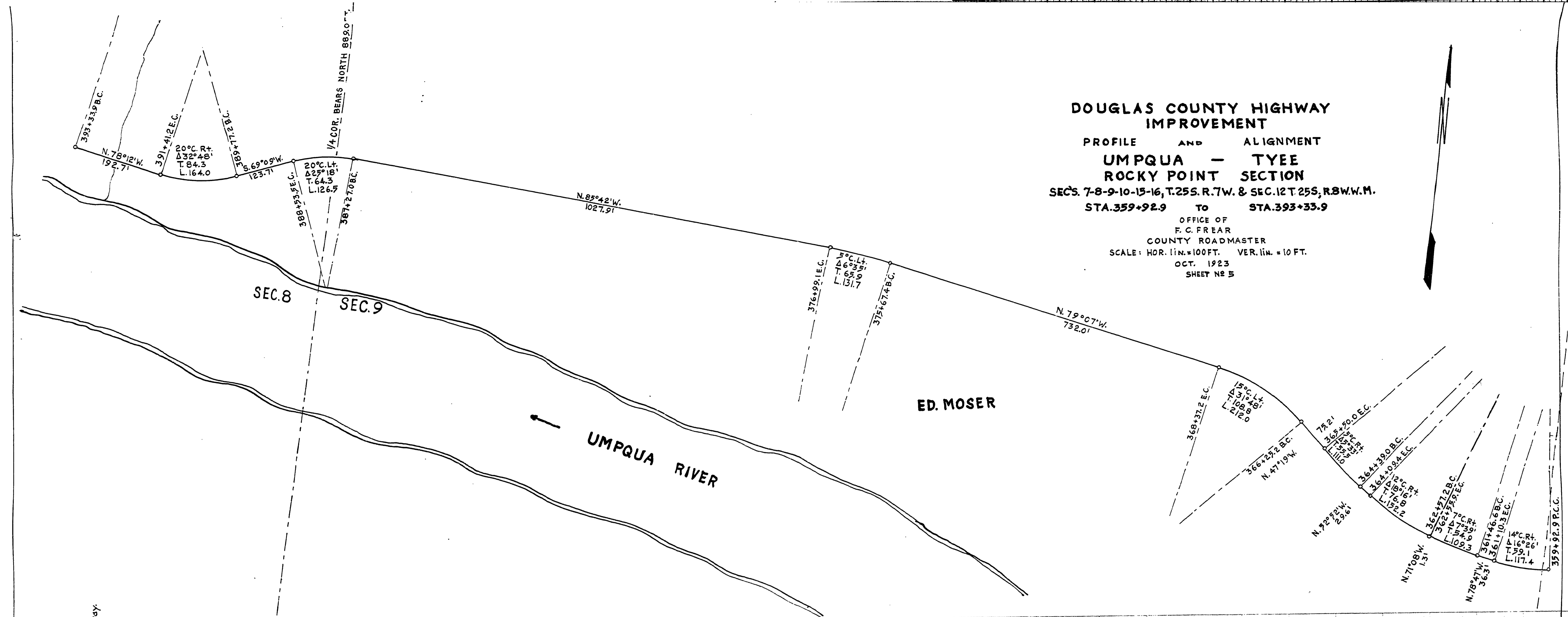
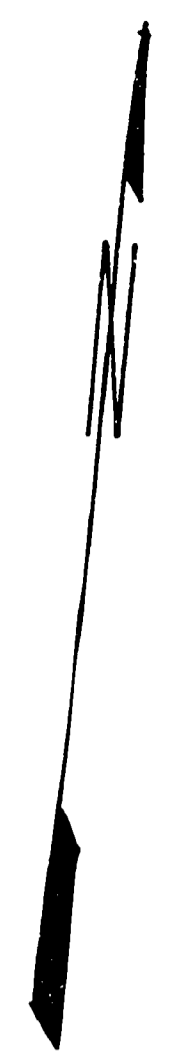


**DOUGLAS COUNTY HIGHWAY IMPROVEMENT**

PROFILE AND ALIGNMENT  
**UMPQUA - TYEE**  
**ROCKY POINT SECTION**  
 SEC'S 7-8-9-10-15-16, T.25S. R.7W. & SEC.12 T.25S, R.8W.W.M.  
 STA.359+92.9 TO STA.393+33.9

OFFICE OF  
 F. C. FREAR  
 COUNTY ROADMASTER  
 SCALE: HOR. lin.=100FT. VER. lin.=10 FT.  
 OCT. 1923  
 SHEET NO 5



MARKET ROAD No 27 33

M.P. 5.73 - 6.36

05730636