

ED. MOSER

BARN HOUSE

UMPQUA RIVER

DOUGLAS COUNTY HIGHWAY IMPROVEMENT

PROFILE AND ALIGNMENT

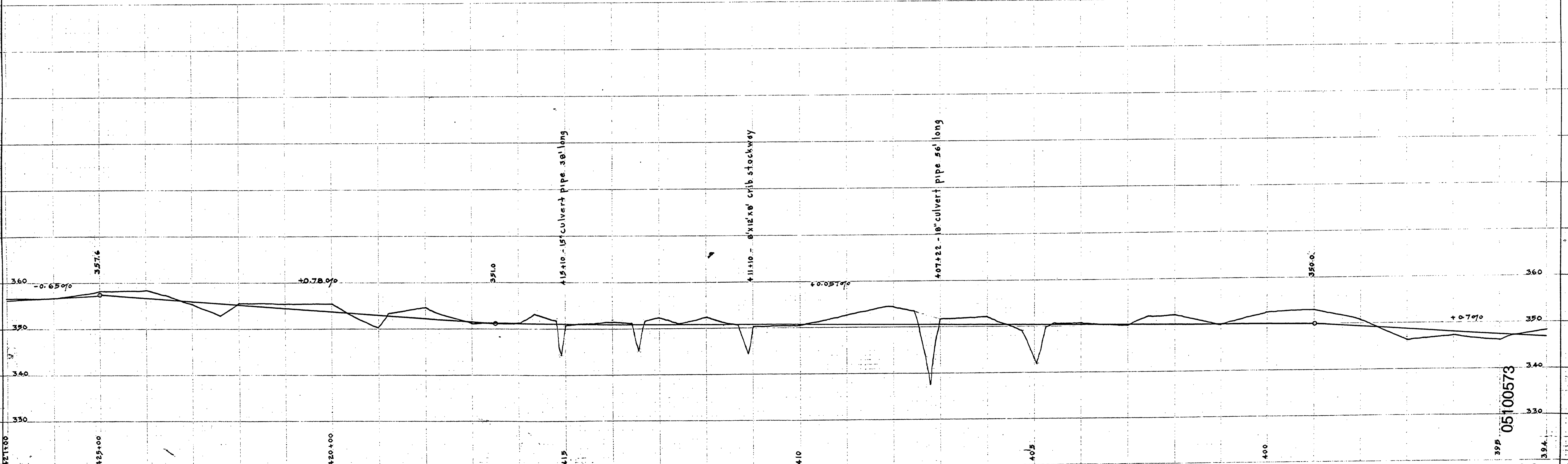
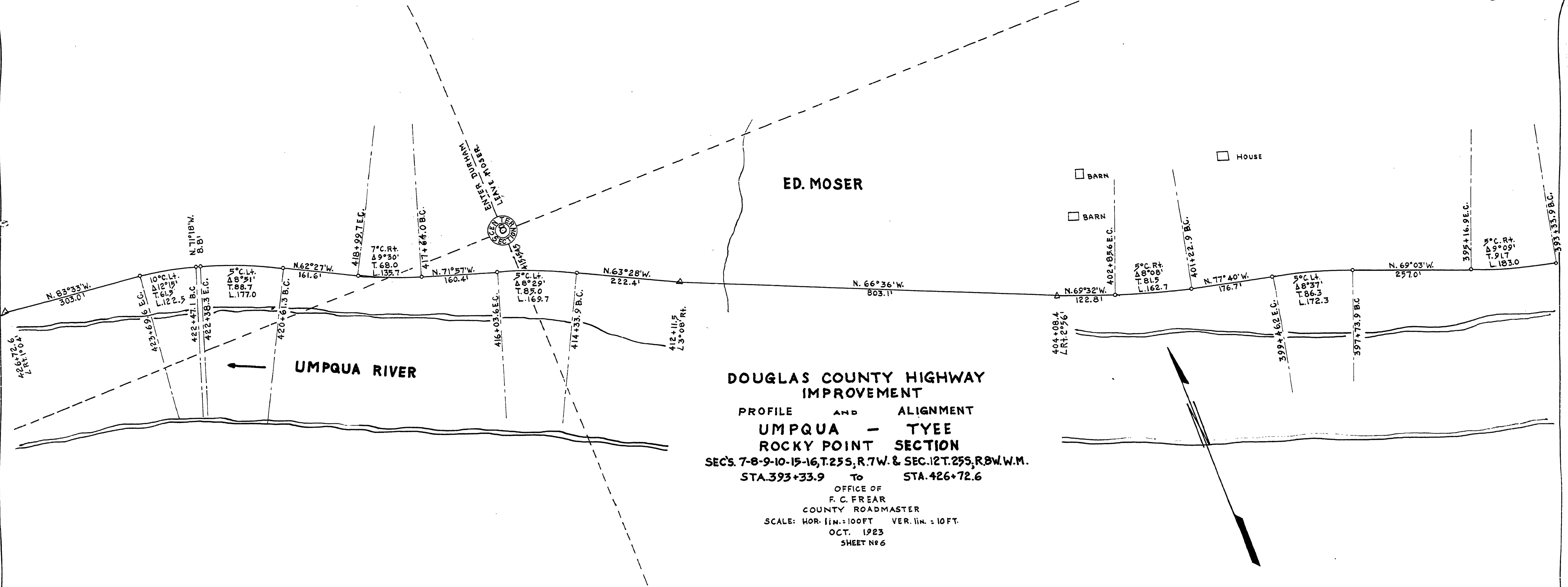
UMPQUA - TYEE

ROCKY POINT SECTION

SECS. 7-8-9-10-15-16, T.25S, R.7W. & SEC. 12, T.25S, R.8W, W.M.

STA. 393+33.9 To STA. 426+72.6

OFFICE OF F. C. FREAR COUNTY ROADMASTER SCALE: HOR. 1 in. = 100 FT. VER. 1 in. = 10 FT. OCT. 1923 SHEET No 6



MARKET ROAD No 27-33

05100573

M.P. 5.10 - 5.73 T.25S, R.7W, SEC. 8, OCT. 1923, SHEET 6 OF 9