

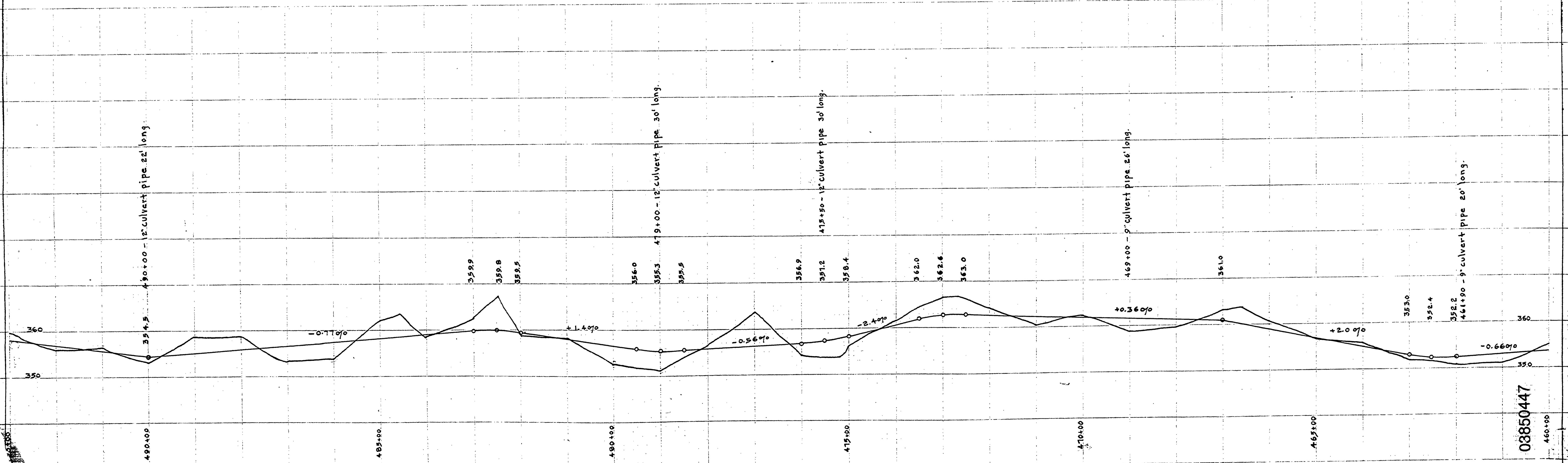
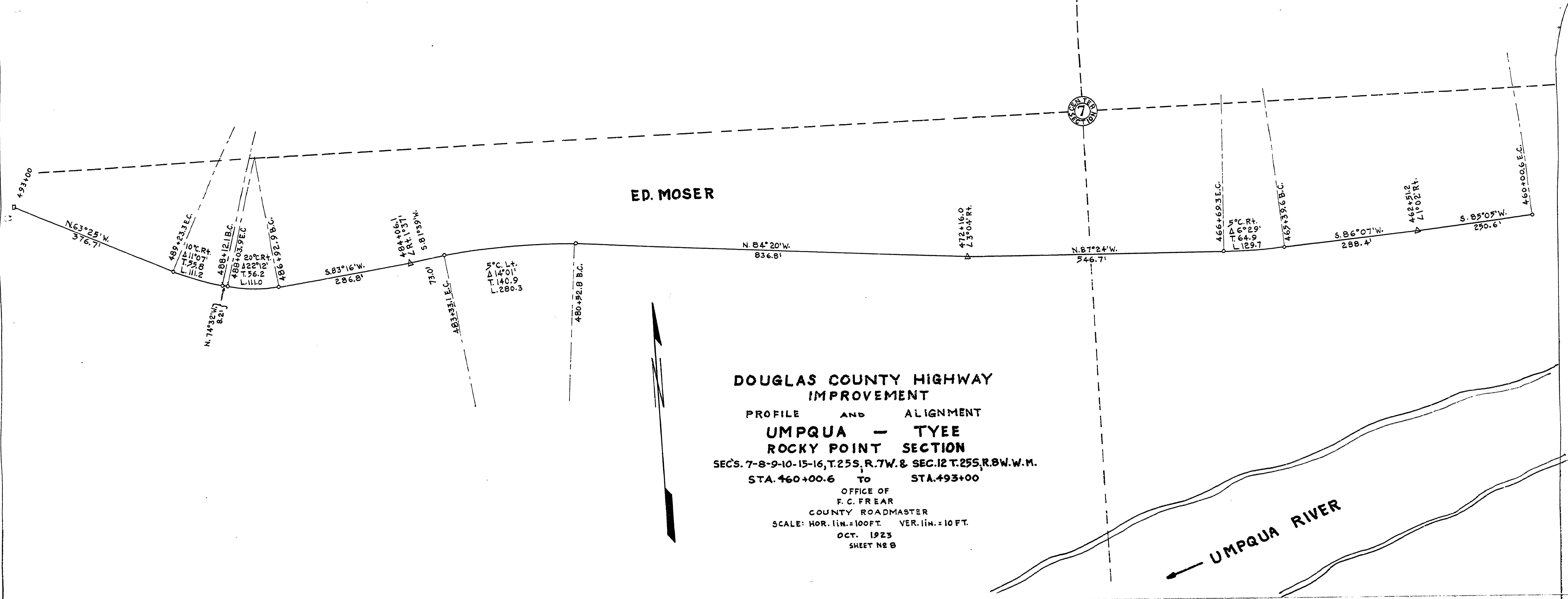
ED. MOSER

DOUGLAS COUNTY HIGHWAY IMPROVEMENT
PROFILE AND ALIGNMENT
UMPQUA - TYEE
ROCKY POINT SECTION
SECS. 7-8-9-10-15-16, T.25S, R.7W. & SEC. 12 T.25S, R.8W. W.M.
STA. 460+00.6 TO STA. 493+00

OFFICE OF
F. C. FREAR
COUNTY ROADMASTER
SCALE: HOR. lin. = 100 FT. VER. lin. = 10 FT.
OCT. 1923
SHEET NO 8

7
SECTION

UMPQUA RIVER



03850447

~ M.P. 3.85 - 4.47

MARKET ROAD NO 27 33