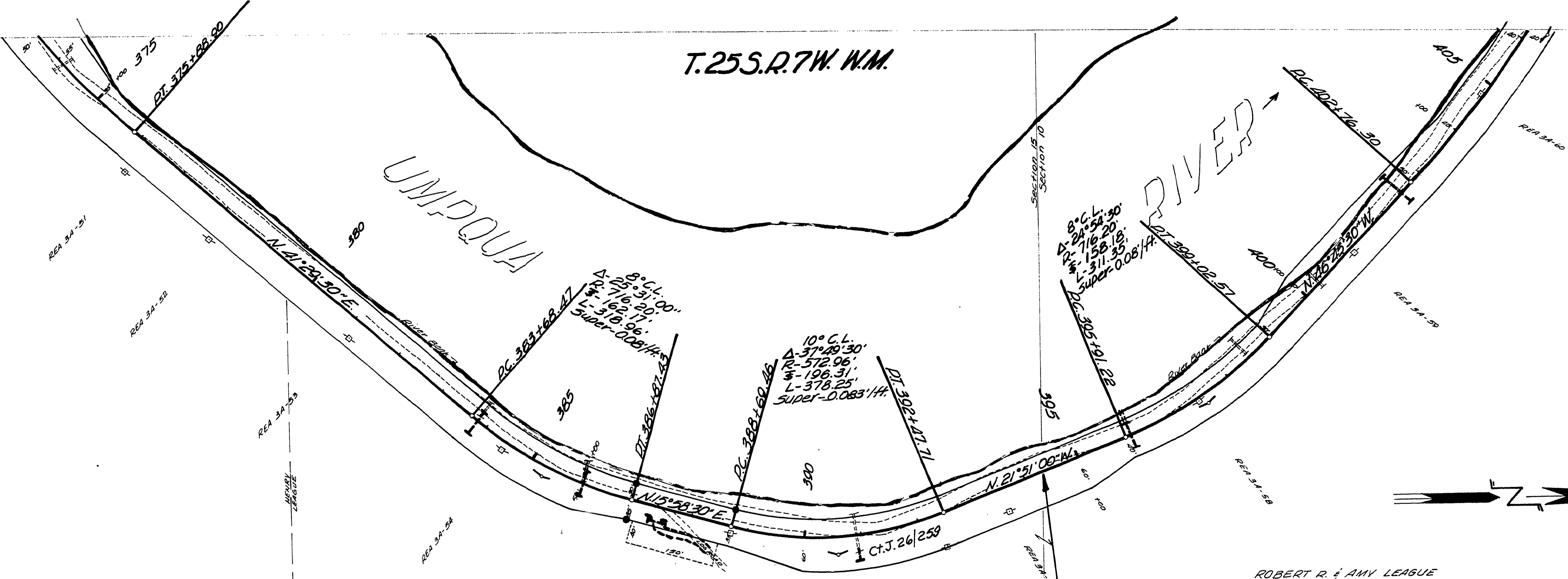


T.25S.R.7W. W.M.

UMDQUA

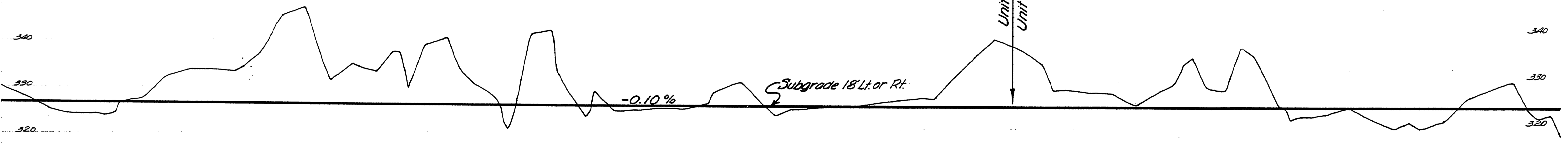
RIVER



W.D. HENRY

ROBERT R. & AMY LEAGUE

● Indicates 3/4" Iron Pins & 4x4 Posts.



FIELD RECEIVED
 COUNTY ENGINEER
 DOUGLAS COUNTY, NEB.

Douglas County Road Dept.
 TYEE ROAD Co. Rd. No. 33
 Date Feb. 1963 Sheet 13 of 24
 A.H. MAY County Engineer

06320689

M.P. 6.32 - 6.89

Co. Rd. #33 FEB 1963 SH. 13 OF 23

(69)