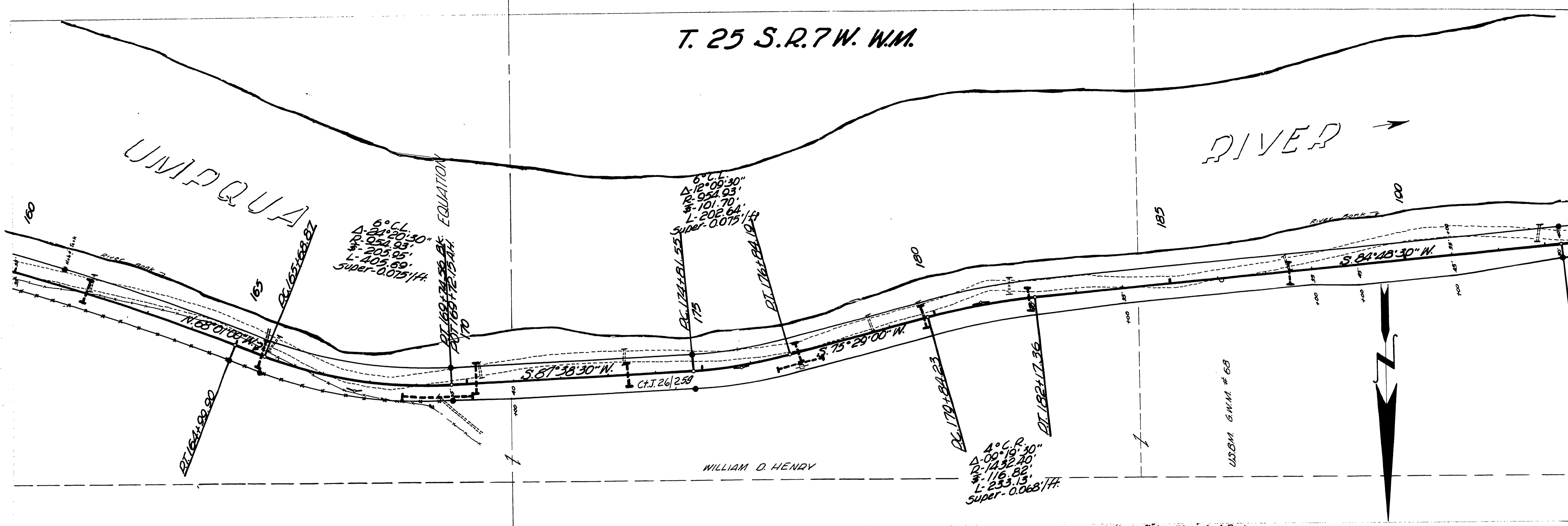


T. 25 S. R. 7 W. W.M.

RIVER →

UNIPQUA



6° C.L.
 Δ -21° 20' 30"
 R -954.93'
 L -205.95'
 L -405.69'
 Super-0.075'/ft.

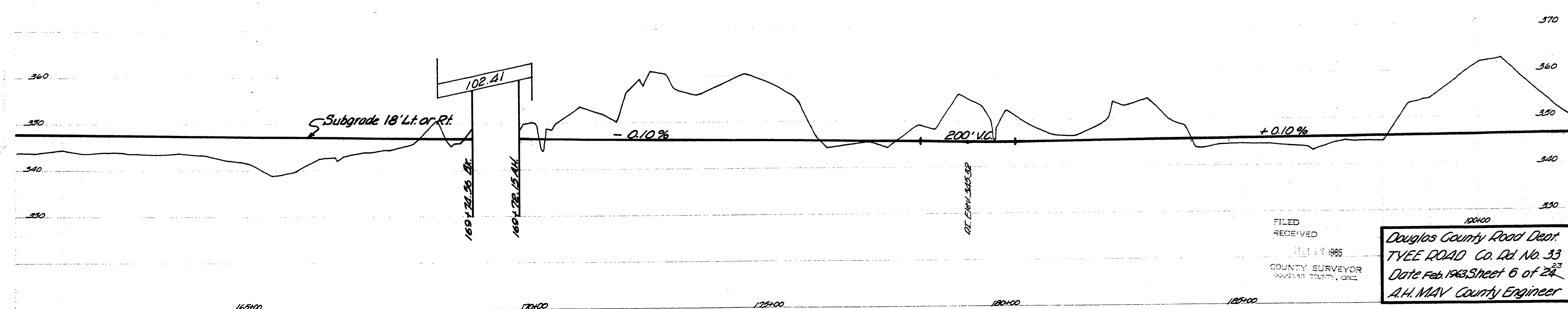
6° C.L.
 Δ -12° 00' 30"
 R -954.93'
 L -101.70'
 L -202.64'
 Super-0.075'/ft.

4° C.R.
 Δ -00° 19' 30"
 R -1432.40'
 L -116.82'
 L -233.13'
 Super-0.068'/ft.

WILLIAM D. HENRY

USBM G.M.M. # 68

• Indicates 1/4" Iron Pins & 4x4 Posts.



FILED
 RECEIVED
 FEB 17 1963
 COUNTY SURVEYOR
 DOUGLAS COUNTY, ORE.

Douglas County Road Dept.
 TYEE ROAD Co. Rd. No. 33
 Date Feb. 1963, Sheet 6 of 23
 A.H. MAV County Engineer

02270284

100MILES PER HOUR

M.P. 2.27-2.84

FEB. 1963
 Co. Rd. # 33
 SKT 6 of 23

62