

DOUGLAS COUNTY OREGON

AS CONSTRUCTED
GRADING

TYEE ROAD

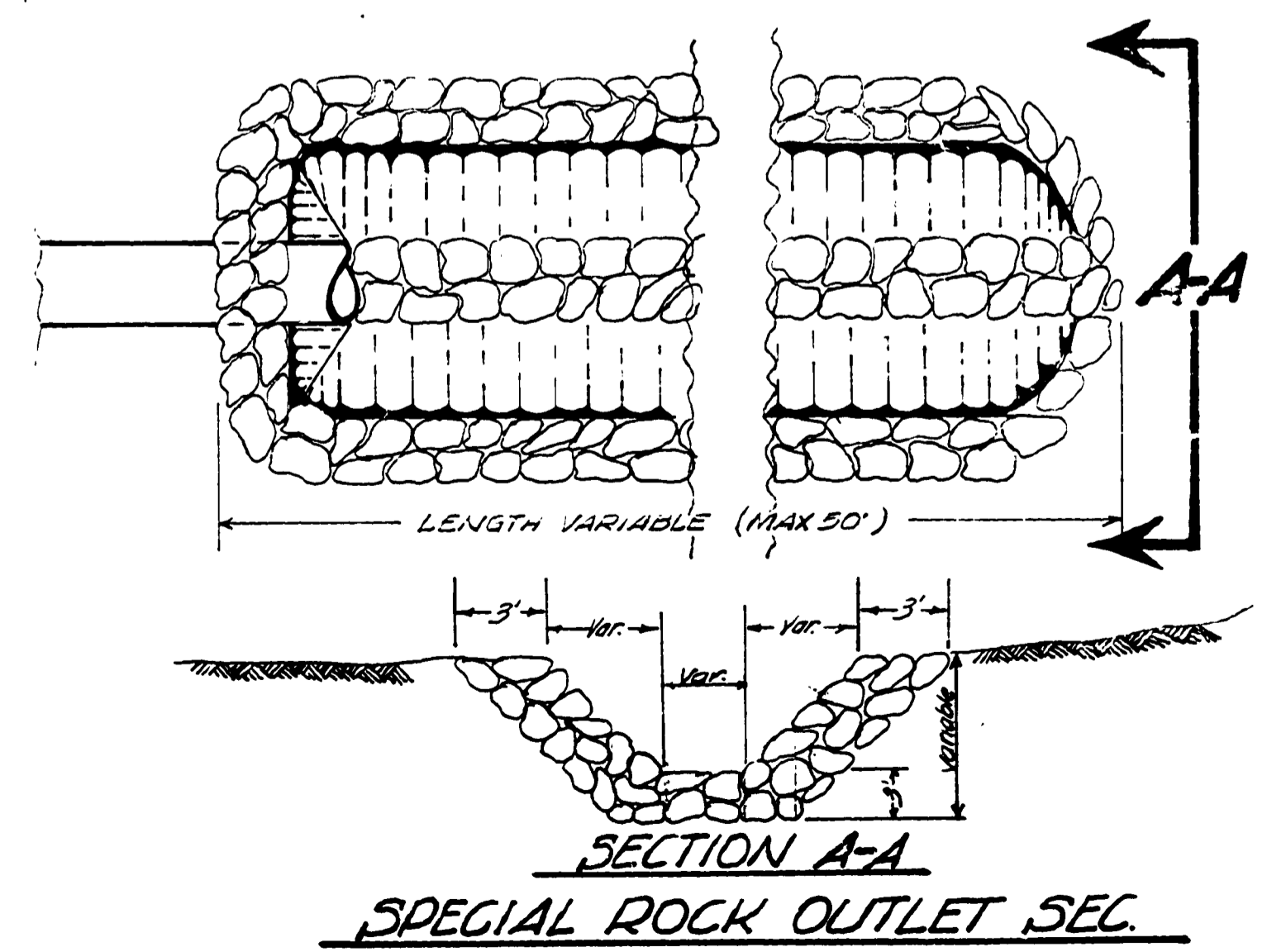
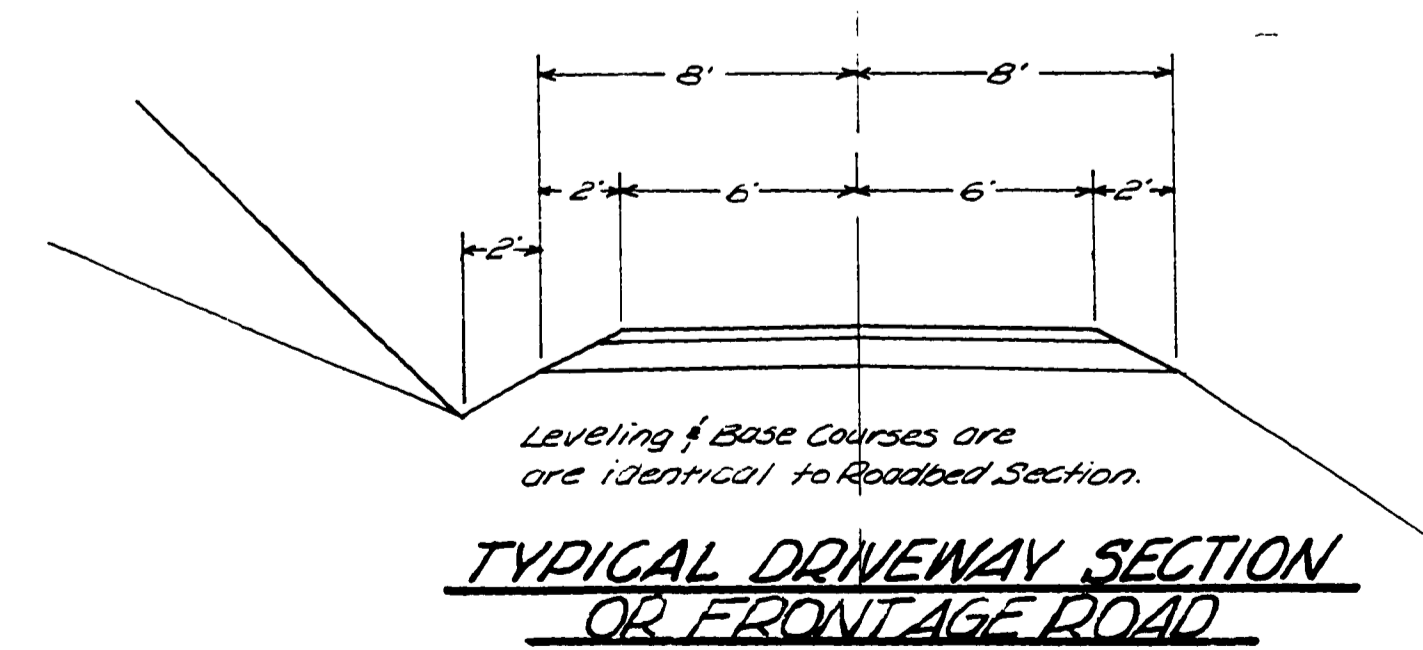
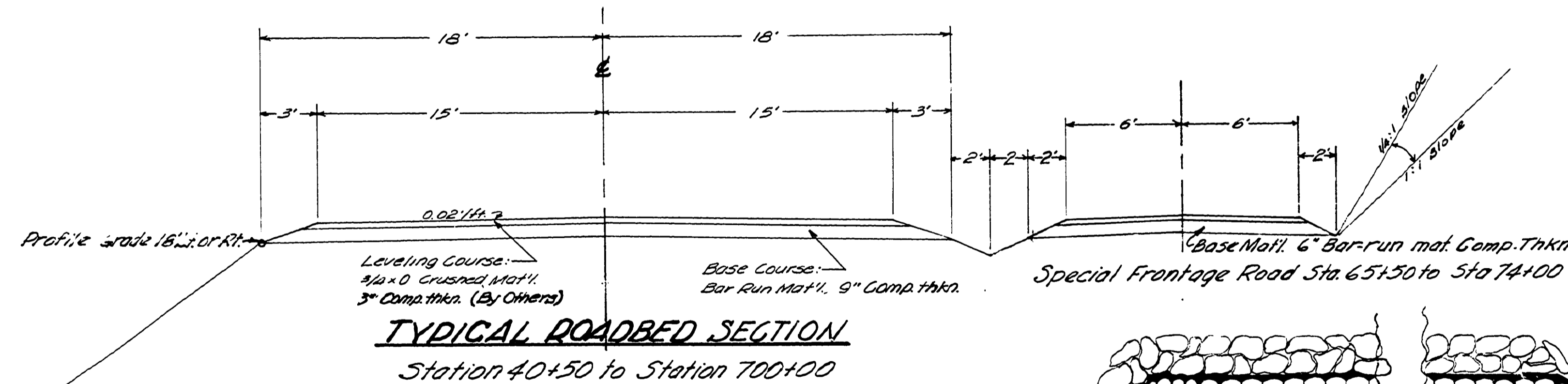
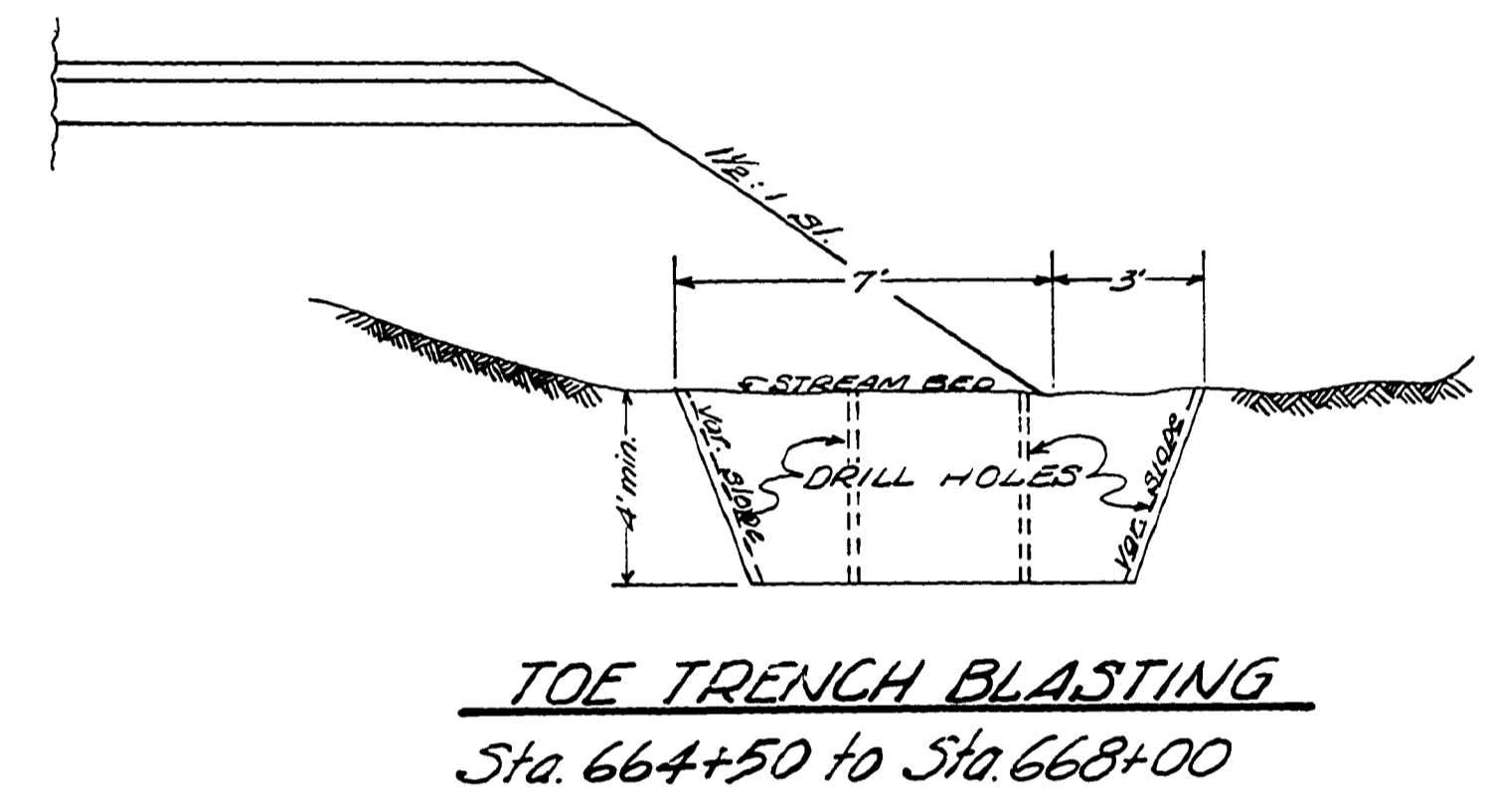
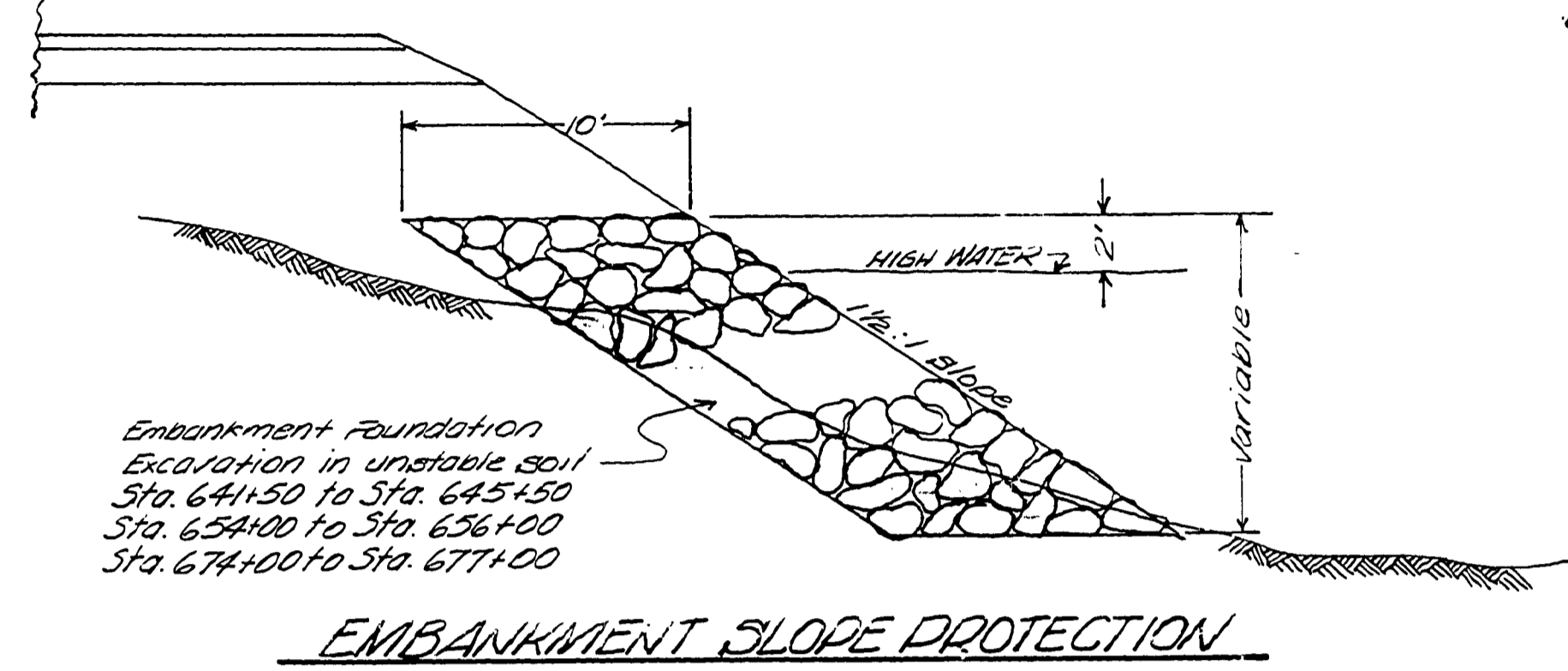
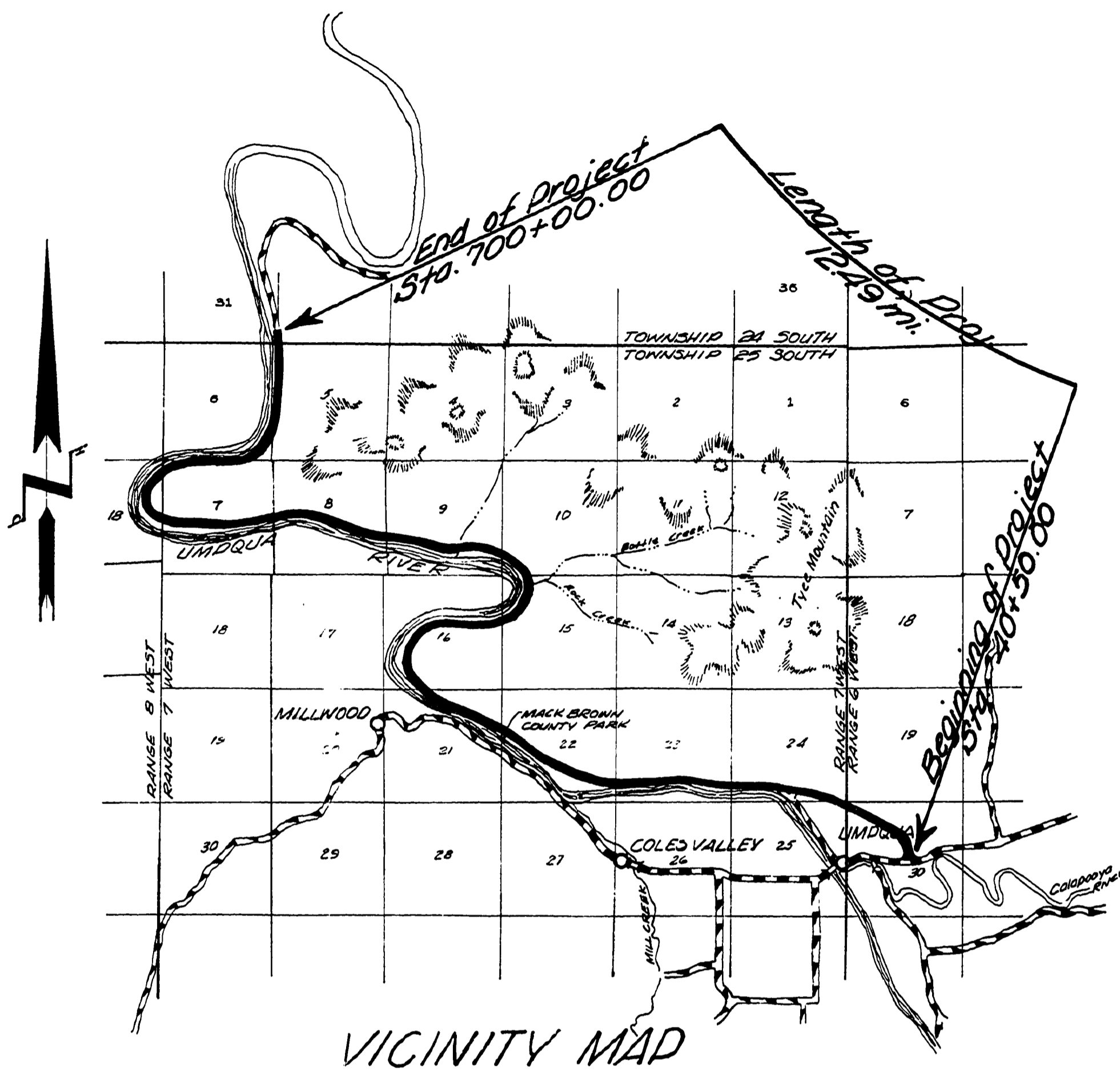
COUNTY ROAD NO. 33

FEB. 1963

Adopted by Resolution of
the County Court this 7th
day of Feb. 1963.

V. T. Jackson
County Engineer
R. J. ...
Commissioner

Approved M. H. May Date 3/12/63
COUNTY ENGINEER



FILED
RECEIVED
FEB 17 1963
COUNTY SURVEYOR
DOUGLAS COUNTY, ORE.

0000125C

57