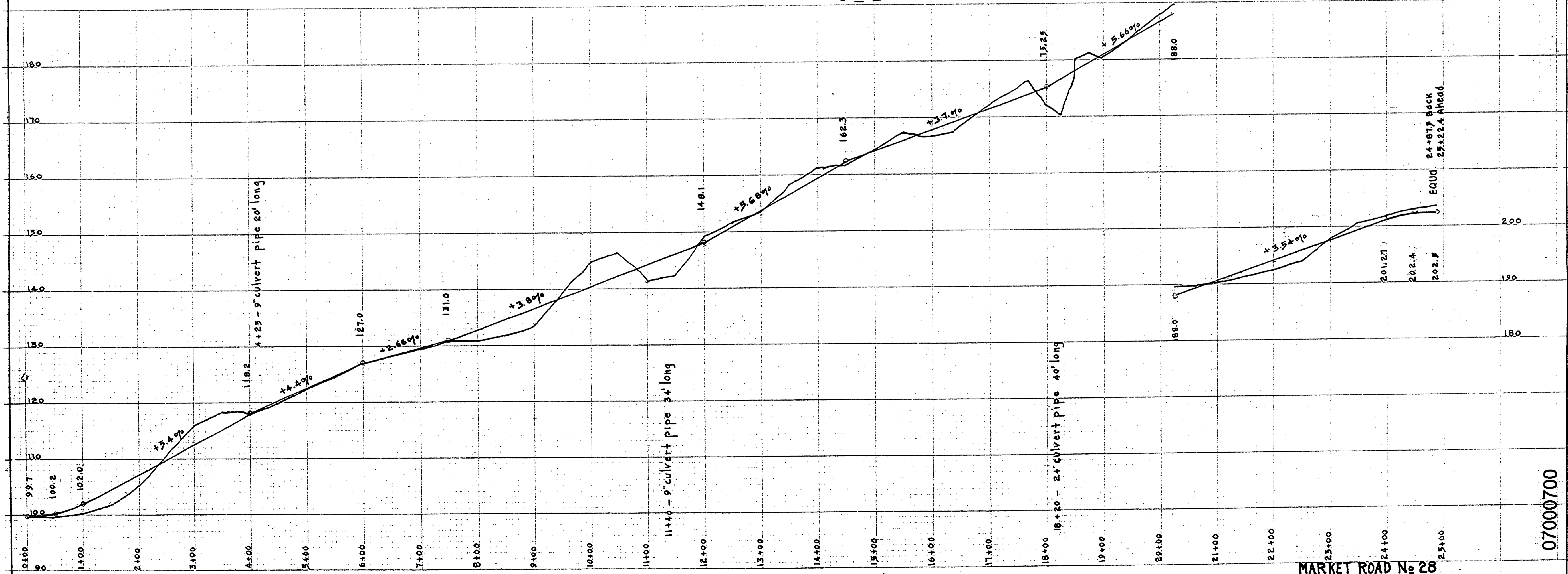
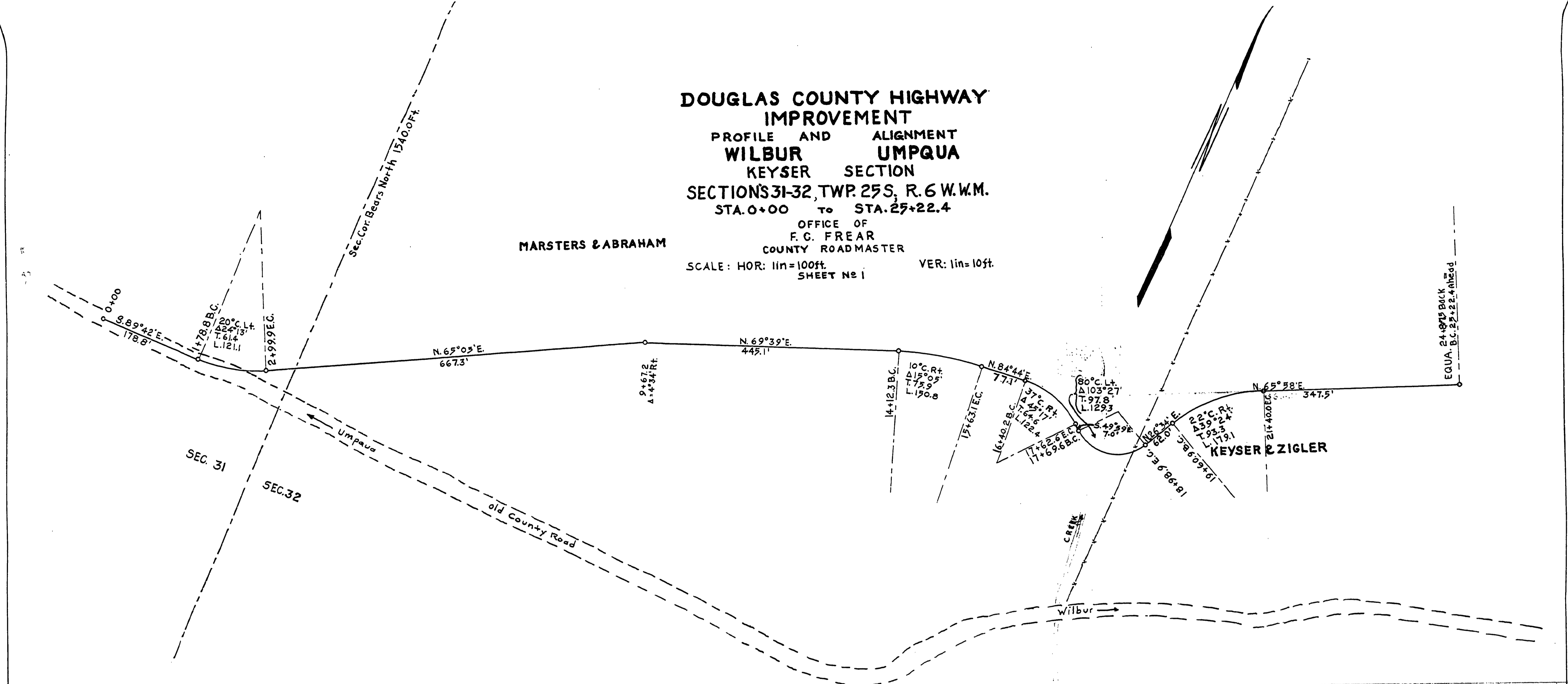


**DOUGLAS COUNTY HIGHWAY  
IMPROVEMENT**  
PROFILE AND ALIGNMENT  
**WILBUR UMPQUA**  
KEYSER SECTION  
SECTIONS 31-32, TWP. 25S, R. 6 W.M.  
STA. 0+00 TO STA. 25+22.4

MARSTERS & ABRAHAM

OFFICE OF  
F. G. FREAR  
COUNTY ROADMASTER  
SCALE: HOR: 1in=100ft. VER: 1in=10ft.  
SHEET No 1



MARKET ROAD No 28

07000700

C-32