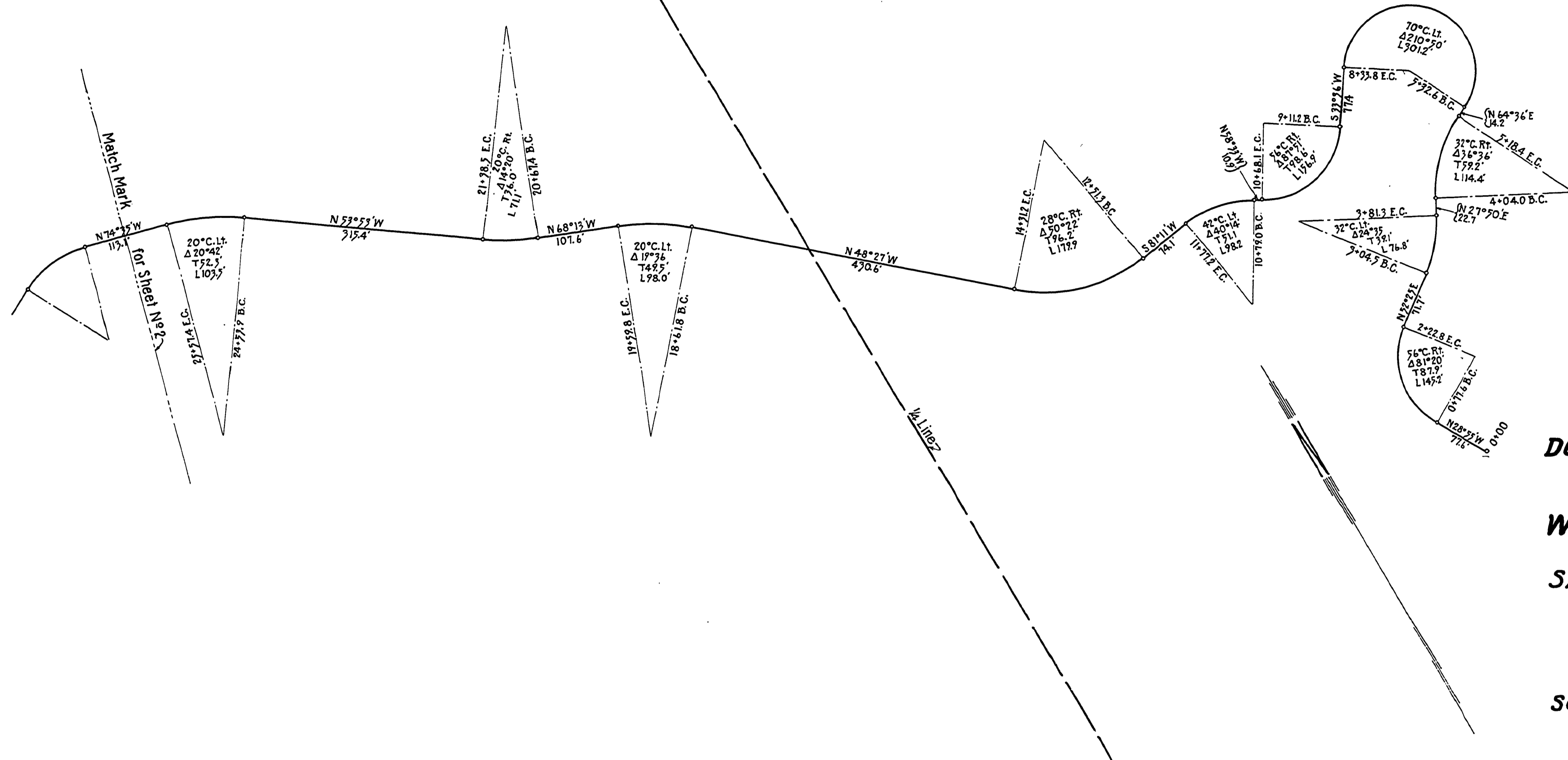
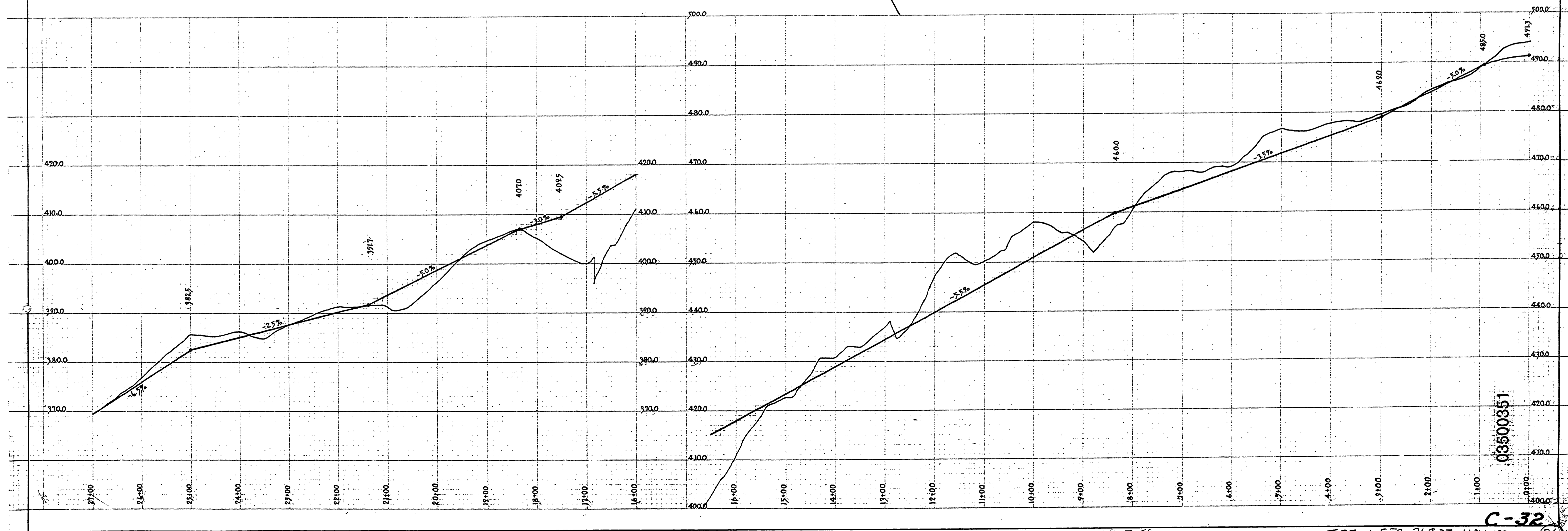


John E. Flurry to Douglas County  
 40' Right of way Consideration \$150.00  
 Sta 1+43.0 to Sta 20+67.4  
 Road Record 8 Page 397 June 24, 1922



**DOUGLAS COUNTY HIGHWAY IMPROVEMENT**  
 PROFILE AND ALIGNMENT  
**WILBUR-DAYS PLACE ROAD**  
**HARDING DAVIS HILL**  
 SECTIONS 26 & 27, TWP 25 S., R. 6 W. W. M  
 STA. 0+00 TO STA. 51+99.3  
 OFFICE OF  
**F.C. FREAR**  
 COUNTY ROADMASTER  
 MAY 1922  
 SCALE: HOR. 1 in. = 100 ft. VER. 1 in. = 10 ft.



03500851

C-32

T-25-6 SEC. 26 & 27 MAY 1922