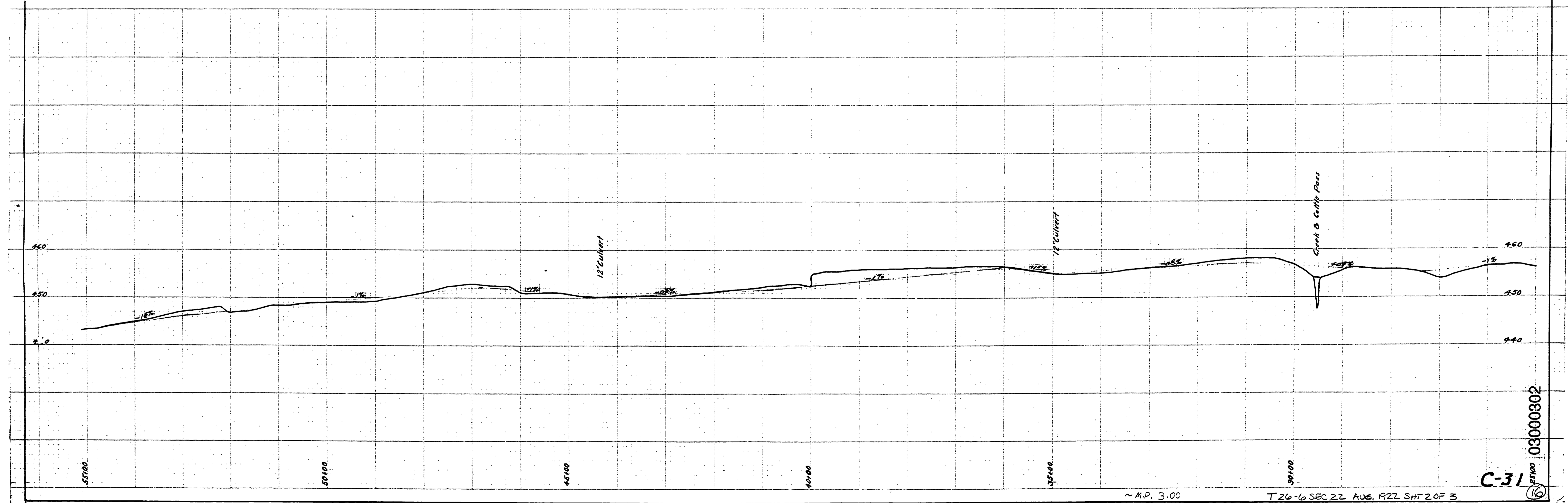


NORTH FORK UMPQUA RIVER

**DOUGLAS COUNTY HIGHWAY IMPROVEMENT**  
**PROFILE AND ALIGNMENT**  
**WILBUR TO GARDEN VALLEY**  
**BRAND SECTION**  
 SECTIONS 22 TWP 26S, RANGE 6 W.W.M.  
 STA. 25+00 TO STA. 55+00  
 OFFICE OF  
 F. C. FREAR  
 COUNTY ROADMASTER  
 AUGUST 1922  
 SCALE: Hor. 1in=100ft. VERTICAL 1in=10ft.  
**SHEET No 2**

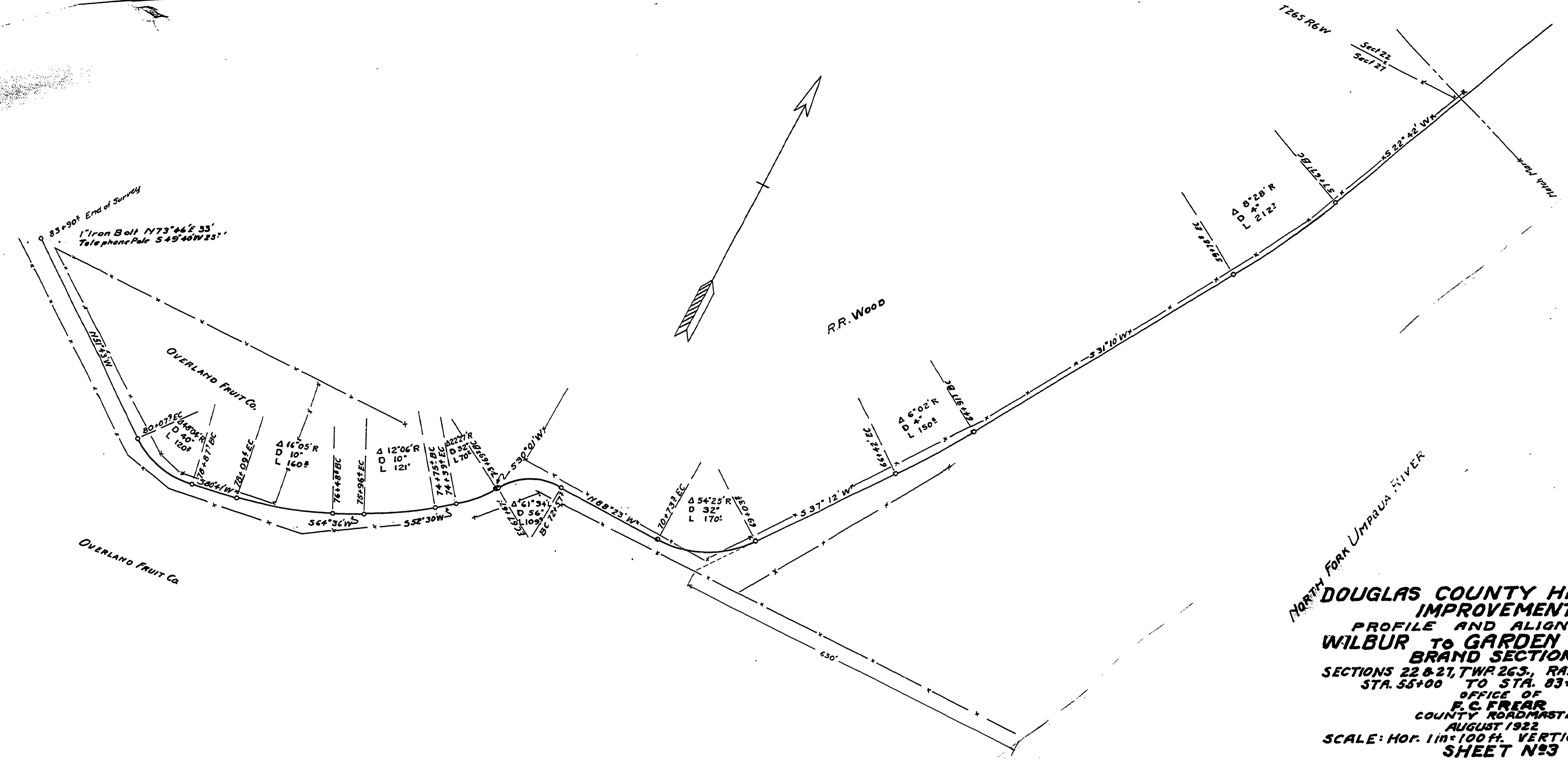


03000802

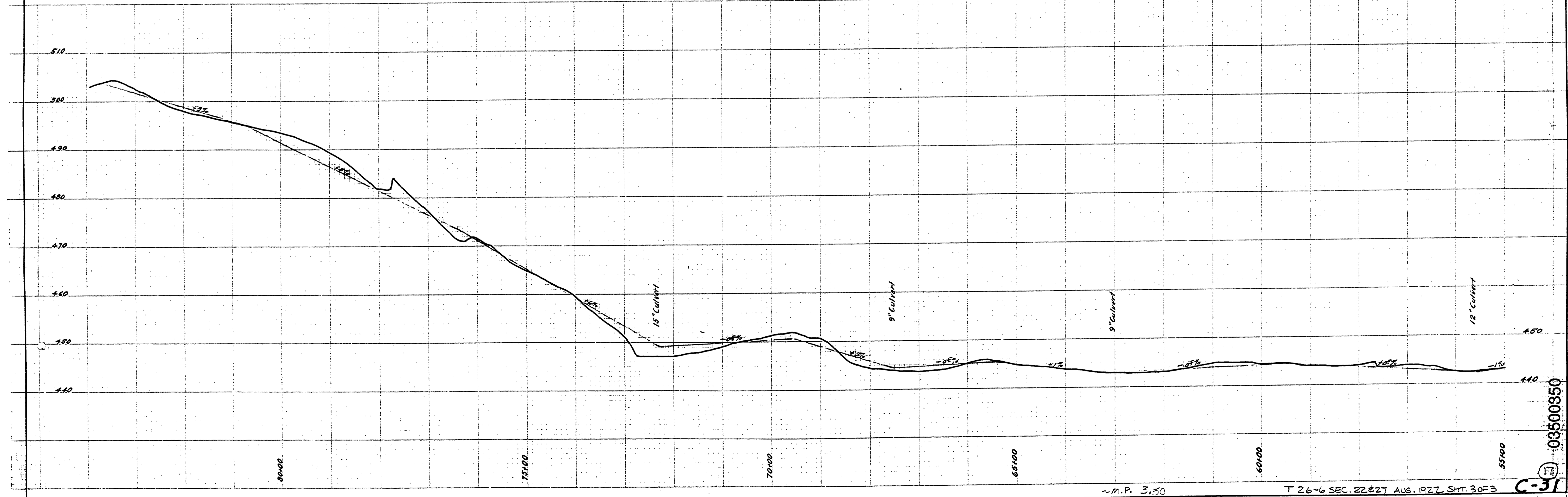
C-31

~ M.P. 3.00

T 26-6 SEC 22 AUG. 1922 SH 2 OF 3



**DOUGLAS COUNTY HIGHWAY IMPROVEMENT**  
**PROFILE AND ALIGNMENT**  
**WILBUR TO GARDEN VALLEY BRAND SECTION**  
 SECTIONS 22 & 27, TWP 26S., RANGE 6 W.W.M  
 STA. 55+00 TO STA. 83+50.2  
 OFFICE OF  
**F. C. FEAR**  
 COUNTY ROADMASTER  
 AUGUST 1922  
 SCALE: HOR. 1 in = 100 ft. VERTICAL 1 in = 10 ft.  
**SHEET N° 3**



03500350